

Uploading your file to researcherid.com

ResearcherID.com - Microsoft Internet Explorer

File Edit View Favorites Tools Help

Back Forward Stop Home Search Favorites Refresh Mail Print

Address http://www.researcherid.com/ Go

ResearcherID

A Global Community Where Researchers Connect

Home Login Search

Identify. Communicate. Collaborate.

Ferkin, Michael H Preview the New Features Labs Your labs page shows only your public data. Manage Profile Preview Public Version

ResearcherID: A-3968-2009

Other Names:

- E-mail: mlferkin@memphis.edu
- URL: <http://www.researcherid.com/rid/A-3968-2009>
- Role: **Faculty**
- Subject: **Behavioral Sciences ; Environmental Sciences & Ecology ; Physiology**
- Keywords: **animal behavior ; hormones and behavior ; microtine rodents**

My Institutions (more details)

- Primary Institution: **University of Memphis**
- Sub-org./Dept:
- Role: **Faculty**
- Joint Affiliation:
- Sub-org./Dept:
- Role:
- Past Institutions:

Description: **I study the behavior, physiology, cognitive capacities, and ecology of microtine rodents**

Publications My Publications: View Add Publications

My Publications (0)

- [View Publications](#)
- [Citation Metrics](#)
- Manage | [Add](#)

Publication List 1 (0)

- [View Publications](#)
- [Citation Metrics](#)
- Manage | [Add](#)

Publication List 2 (0)

- [View Publications](#)
- [Citation Metrics](#)

Welcome to your "My Publications"

The "My Publications" is an area to which you can add publications that you have authored. You can add publications by searching *ISI Web of Knowledge*SM, searching *Web of Science*[®], using *EndNote Web*[®], or uploading a file.

To add publications, click the **Add** link located in the menu on the left-hand side of your screen, or by clicking on the **Add Publications** above.

You have the ability to make your "My Publications" public to visitors of ResearcherID for promotion of your scholarly output. Click on the **Manage Profile** button at the top-right corner of the page to change the public and private settings of your data. Note that the second and third publication lists are always private.

* Note: Access to *ISI Web of Knowledge*, *Web of Science*, *EndNote Web* are based on the entitlements of the computer where you are accessing ResearcherID.

[More information](#)

Login to researcherid.com

Click on the add button.

To add publications to: You CAN select option 1 at any time. However, if you are in possession of an RIS file (from EndNote) please select option 3.

Note: Depending on yo

Option 1:

ISI Web of KnowledgeSM

[Search ISI Web of Knowledge](#)

Use this option to search *ISI Web of Knowledge*. Depending on your subscription, this can include articles, books, patents, and more.

[Search Web of Science](#)

Use this option to search *Web of Science*. Depending on your subscription, this includes the world's leading scholarly literature in the sciences, social sciences, arts, and humanities and proceedings of


Option 2:

EndNote^{Web}

[Go to EndNote Web](#)

If you have access to EndNote Web, you will see three ResearcherID folders. Those three folders represent your three publication lists here in ResearcherID. You can use EndNote Web to add articles to and manage those lists.

Option 3:

 Upload RIS File

[Upload an RIS file \(from EndNote, RefMan, or other reference software\)](#)

You can upload an RIS formatted text file. The RIS file format is a tagged format for expressing bibliographic citations.

ResearcherID

A Global Community Where Researchers Connect

My Publications: 0

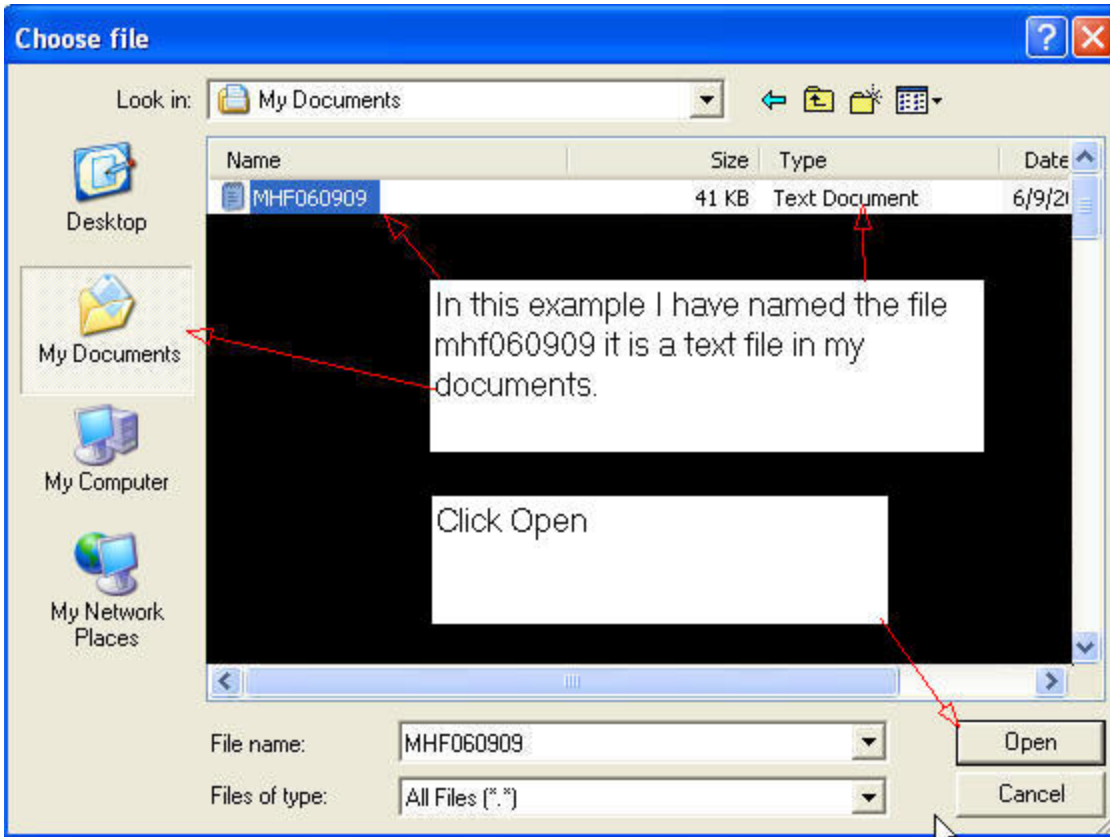
[Search ISI Web of Knowledge for Articles](#) | [Search Web of Science for Articles](#) | [Search Web of Science for Distinct Author Sets](#) | [Upload an RIS file \(from EndNote, RefMan, or other reference software\)](#) | [Go to EndNote Web](#)

Upload an .RIS file

You can upload an RIS-formatted file, which can be exported from EndNote, RefMan, or other reference software. The RIS format is a tagged file format. [More information and samples](#)

Browse for your RIS file:

select Browse and find the .txt file that either you have created with EndNote or I have sent you via email.



ResearcherID

A Global Community Where Researchers Connect

[Home](#) [My Researcher Profile](#) [Log Out](#)

Add to: My Publications

[Return to My Researcher Profile](#)

[Return to Add Menu](#)

My Pu

[Search ISI Web of Knowledge for Articles](#) | [Search Web of Science for Articles](#) | [Search Web of Science for Distinct Author Sets](#) | [Upload an RIS file \(from EndNote, RefMan, or other reference software\)](#) | [Go to EndNote Web](#)

Upload an .RIS file

Click **UPLOAD** file

You can upload an RIS-formatted file, which can be exported from EndNote, RefMan, or other reference software. The RIS format is a tagged file format. [More information and samples](#)

Browse for your RIS file:

C:\Documents and Settings\apowless.UOM\My Document

Upload File

Add to: My Publications

[Return to My Researcher Profile](#)

[Return to Add Menu](#)

[Search ISI Web of Knowledge for Articles](#) | [Search Web of Science for Articles](#) | [Search Web of Science for Distinct Author Sets](#) | [Upload an RIS file \(from EndNote, RefMan, or other reference software\)](#) | [Go to EndNote Web](#)

Wait while file is transmitted. At the end of a successful transmission

Upload an .RIS file

Your file has uploaded successfully. 108 item(s) have been added to My Publications.

You can upload an RIS-formatted file, which can be exported from EndNote, RefMan, or other reference software. The RIS format is a tagged file format. [More information and samples](#)

Browse for your RIS file:

ResearcherID

A Global Community Where Researchers Connect

[Home](#) [My Researcher Profile](#) [Logout](#) [Search](#)

Ferkin, Michael H

[Preview the New Features](#) [Labs](#)

Your labs page shows only your public data.

[Manage Profile](#)

[Preview Public Version](#)

ResearcherID: A-3968-2009

Other Names:

E-mail: mhferkin@memphis.edu

URL: <http://www.researcherid.com/rid/A-3968-2009>

Role: Faculty

Subject: Behavioral Sciences ; Environmental Sciences & Ecology ; Physiology

Keywords: animal behavior ; hormones and behavior ; microtine rodents

Description: I study the behavior, physiology, cognitive capacities, and ecology of microtine rodents

My Institutions [\(more details\)](#)

Primary Institution: University of Memphis

Sub-org./Dept:

Role: Faculty

Joint Affiliation:

Sub-org./Dept:

Role:

Past Institutions:

Clicking on Home will take you back to this page, where you can now see your listing. You can also view the public version, manage your list, sort, and other tasks.

Publications

My Publications (108)

[View Publications](#)

[Citation Metrics](#)

[Manage](#) | [Add](#)

Publication List 1 (0)

[View Publications](#)

[Citation Metrics](#)

My Publications: View

[Manage List](#)

[Add Publications](#)

108 publication(s)

Page 1 of 11

Sort by: Times Cited

- Title: Antibodies to *Borrelia burgdorferi* in rodents in Tennessee
Author(s): KOLLARS, T. M. OURTH D. D. LOCKEY T. D. AND MARKOWSKI D.
Source: *J. Spirochetel and Tick-borne Diseases*. Volume: 3: Pages: 130-134. Published: 1996
added 09-Jun-09
- Title: Melatonin treatment affects the attractiveness of the anogenital area scent in meadow voles (*Microtus pennsylvanicus*)
Author(s): FERKIN, M. H.; KILE, J. R.
Source: *Horm. behav.* Volume: 30: Pages: 227-235. Published: 1996
added 09-Jun-09