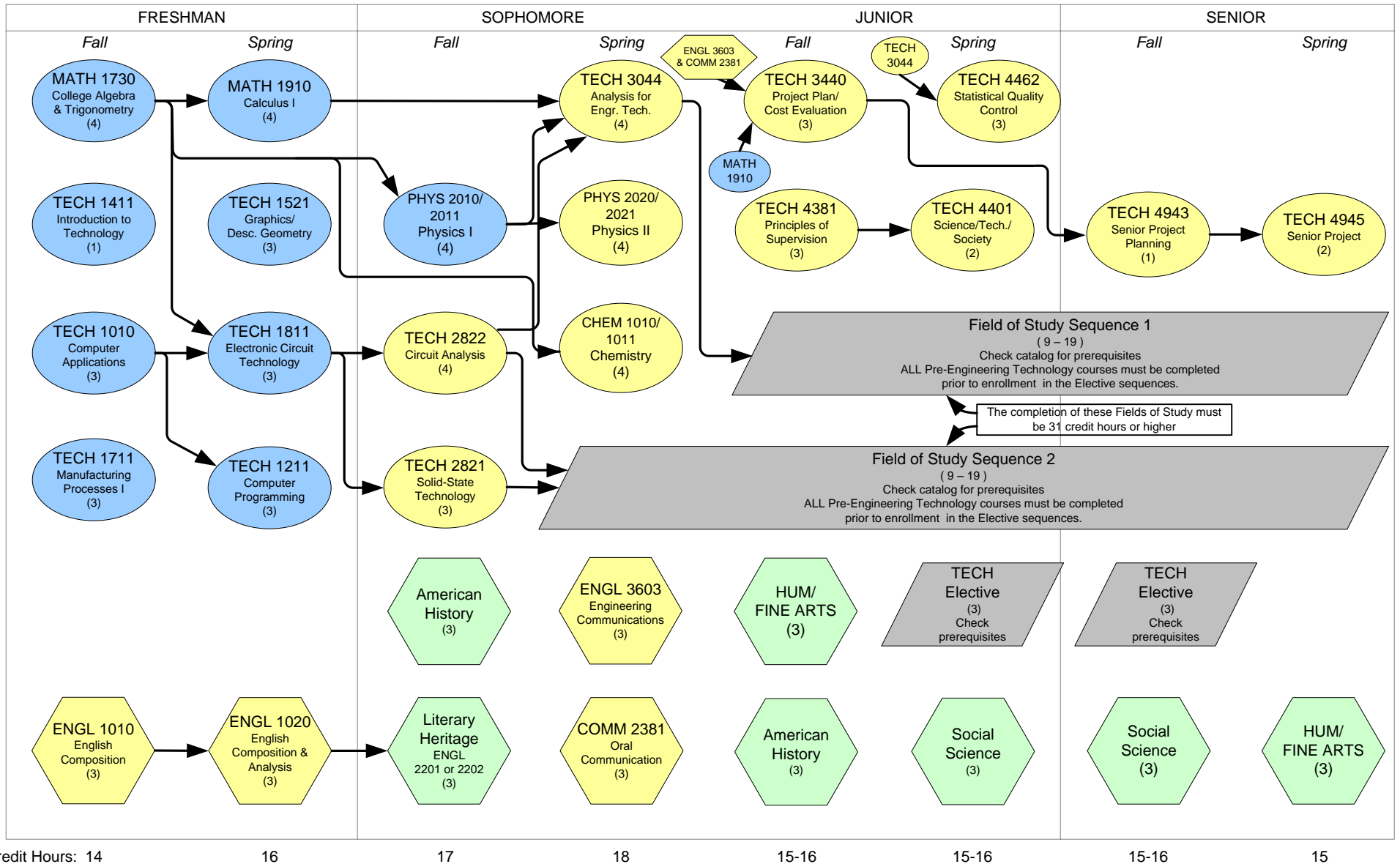


# BACHELOR OF SCIENCE IN ENGINEERING TECHNOLOGY 2014-2015



Credit Hours: 14

16

17

18

15-16

15-16

15-16

15

**Notes:**

1. University of Memphis residency requires a minimum of 60 semester hours from accredited 4-year institutions.
2. College of Engineering residency requires that 30 of the last 60 hours earned be upper division hours in the College of Engineering.
3. Minimum 2.0 GPA (Overall and U of M) required for graduation.
4. Must earn a grade of "C-" or better in all required MATH and TECH courses and ENGL 1010, 1020, 3603. Also pertains to any course substitutions.
5. Complete a minimum of two Elective Course Sequences, selected in consultation with advisor.
6. Immediate prerequisites for core course requirements shown — other prerequisites may exist. Check the current catalog and observe prerequisites when enrolling for courses.

Pre-Engineering Technology Courses

Core Courses

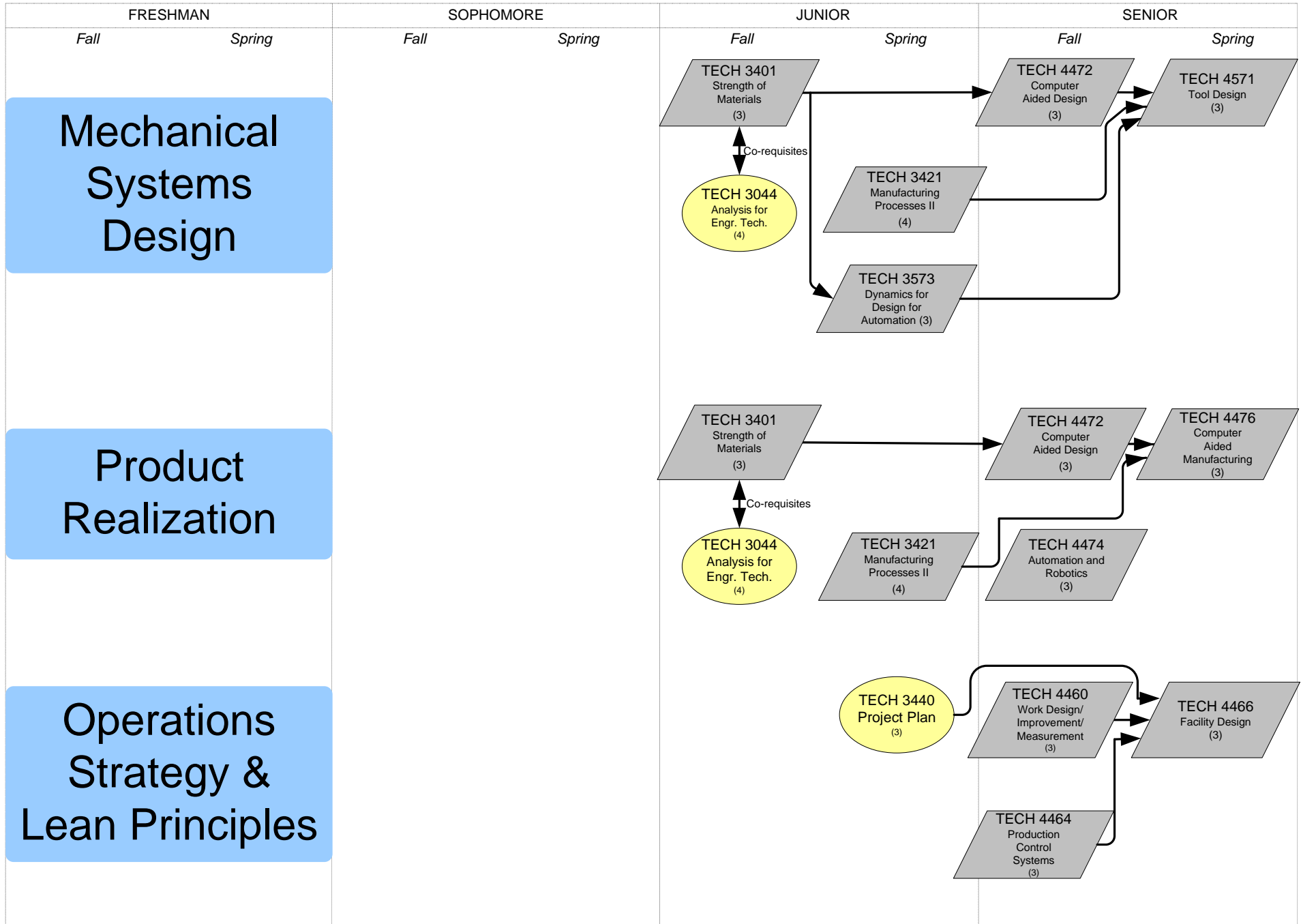
Gen. Ed. Electives

Field of Study TECH Courses

Prerequisite

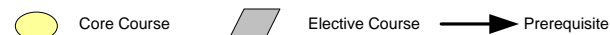
**Total Credit Hours:**  
125-128

# BACHELOR OF SCIENCE IN ENGINEERING TECHNOLOGY 2014-2015 ELECTIVE SEQUENCES



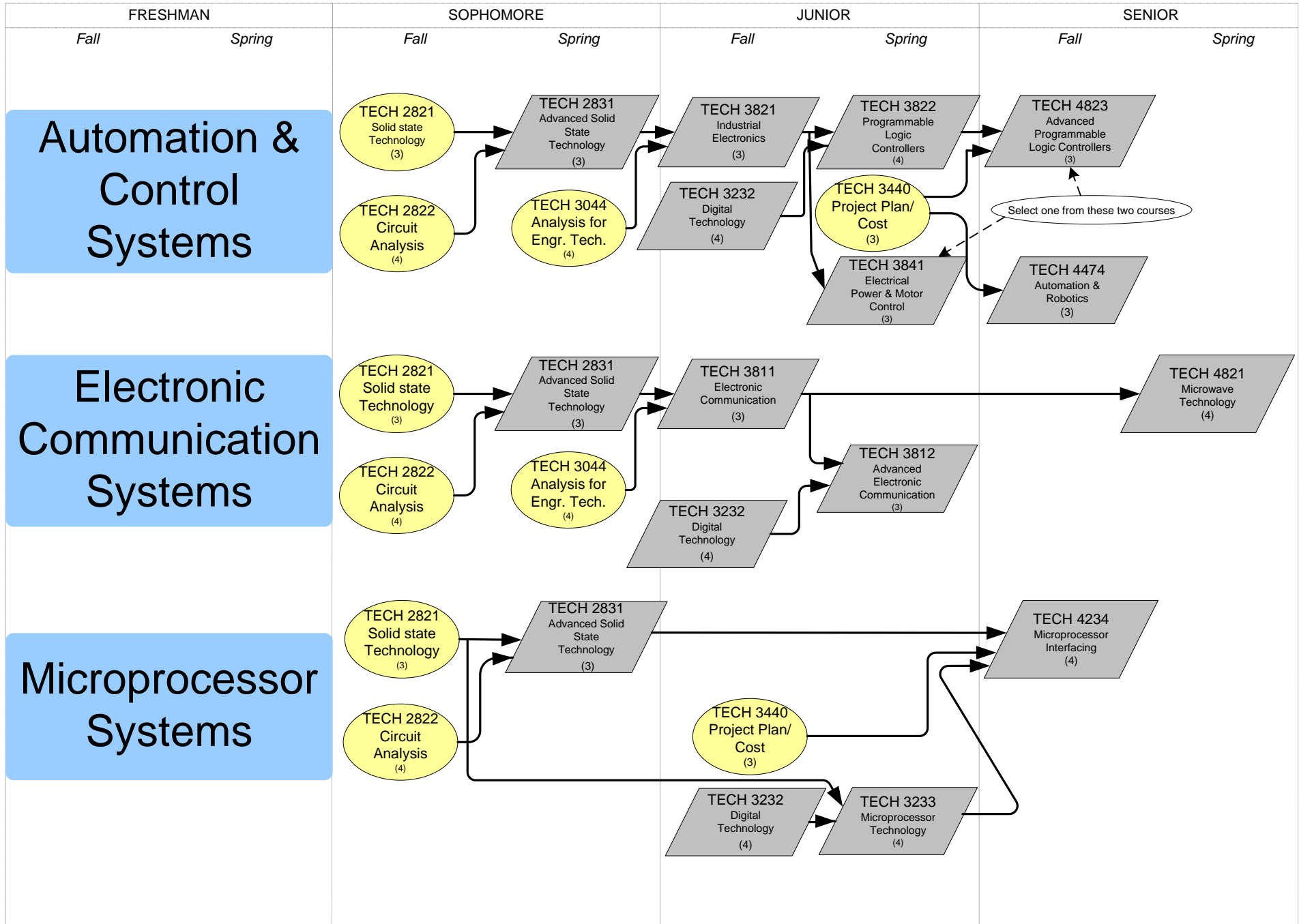
**Notes:**

1. ALL Pre-Engineering Technology courses must be completed prior to enrollment in the Elective sequences.



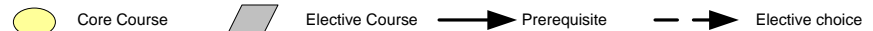
# BACHELOR OF SCIENCE IN ENGINEERING TECHNOLOGY 2014-2015

## ELECTIVE SEQUENCES



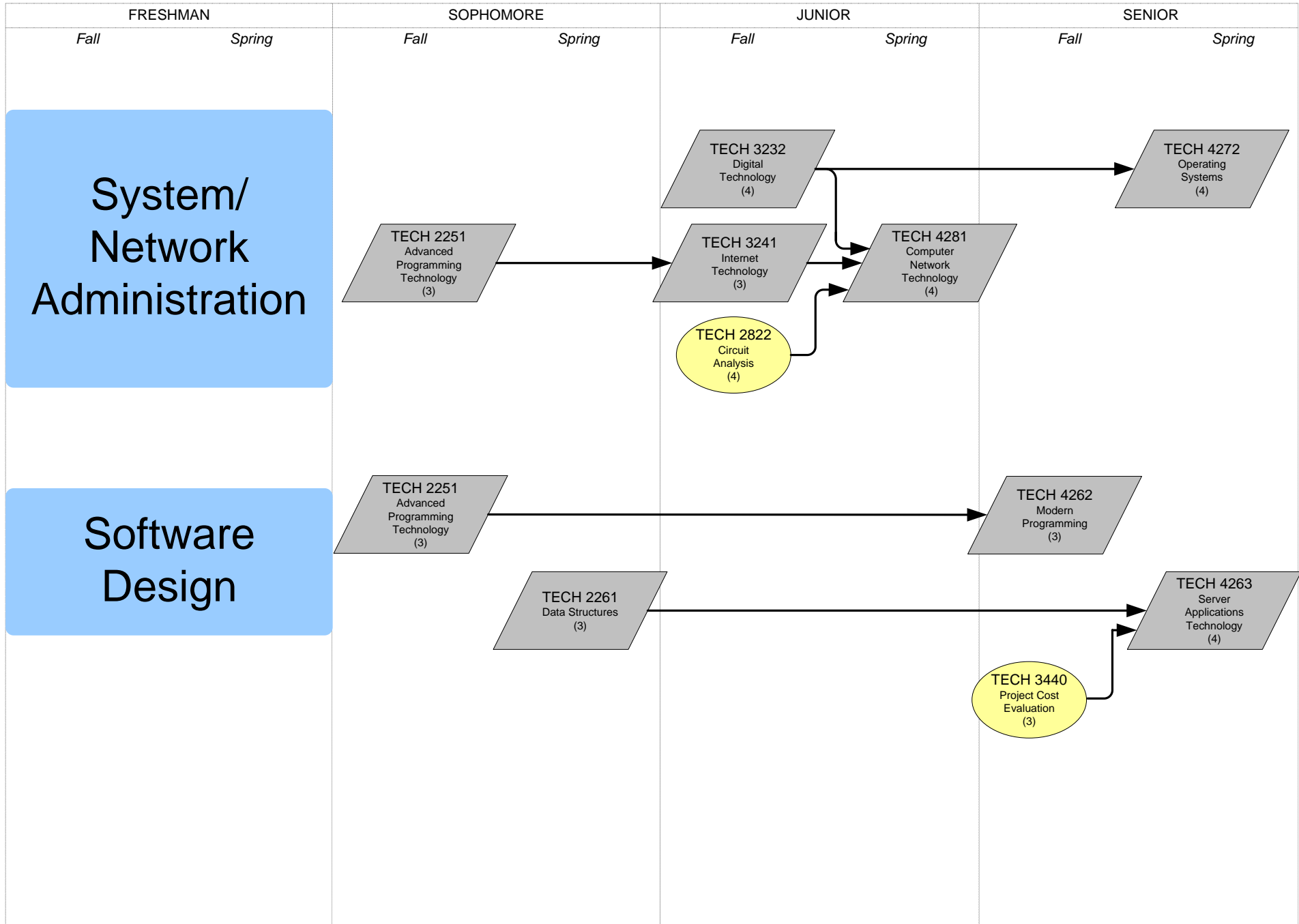
**Notes:**

1. ALL Pre-Engineering Technology courses must be completed prior to enrollment in the Elective sequences.



# BACHELOR OF SCIENCE IN ENGINEERING TECHNOLOGY 2014-2015

## ELECTIVE SEQUENCES



**Notes:**

1. ALL Pre-Engineering Technology courses must be completed prior to enrollment in the Elective sequences.

