

# Horizons

Loewenberg School of Nursing

THE UNIVERSITY OF  
MEMPHIS.

IN THIS ISSUE...

FALL 2010

[Welcome to our new Dean](#)

[A Word from Dr. Lin Zhan](#)

[Alumni News](#)

[Student and Program Successes](#)

[Faculty Accomplishments](#)

[Subscribing To This Newsletter](#)

Send Us Your News!

E-Mail: [nursing@memphis.edu](mailto:nursing@memphis.edu)

Save the Date

Upcoming LSON Events

U of M Homecoming  
October 29 & 30, U of M Campus

Nursing Career Fair  
November 29, 9:00 - 11:00am  
University Center, Ballroom

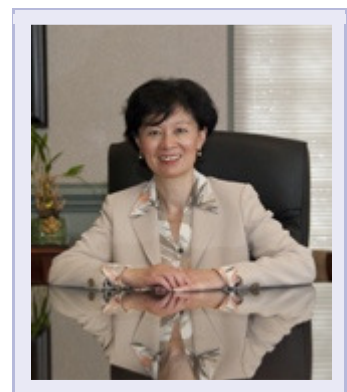
Nursing Convocation  
December 16, 7:00pm  
Michael D. Rose Theatre

## Welcome to Our New Dean

We are pleased to welcome Dr. Lin Zhan, PhD, RN, FAAN, as dean and professor in the Loewenberg School of Nursing. Dr. Zhan joins the U of M from the Massachusetts College of Pharmacy and Health Sciences, where she was dean and professor in the School of Nursing.

A fellow of the American Academy of Nursing, Dr. Zhan has an impressive and proven track record as an accomplished educator, leader and researcher. Her research focuses on quality of life of older adults and ethnic minorities, health promotion for women and ethnic minorities, and diversity in higher education. "Dr. Zhan will be leading our nursing school to even higher levels of excellence," said U of M Provost Dr. Ralph Faudree.

*"I'm honored to be dean of the Loewenberg School of Nursing at the University of Memphis. My vision is to see Memphis Nursing on the national map serving the significant health care needs of the community. I look forward to working collaboratively with the outstanding and gifted nursing faculty, staff, students, and alumni."*



Dr. Lin Zhan, PhD, RN, FAAN

## A Word from Dr. Lin Zhan

### Why the Loewenberg School of Nursing at the University of Memphis?

- More than 60 outstanding faculty and staff who embed our core values of *excellence, competence, and caring* in daily practice of teaching, research/scholarly work, and service to the campus and the community.
- Over \$2 million in federal grants to support executive MSN program and disaster response program.
- Unprecedented enrollment growth - and renewal - with nearly 900 students enrolled in the School this fall.
- Astounding alumni satisfaction rates - over 95% say they were satisfied or very satisfied with their educational experience in LSON at the U of M.
- World-renowned clinical settings available across Memphis and the Mid-South for student learning, faculty research, and graduate employment.

### Why now?

- The Loewenberg School of Nursing's history - more than four decades - of unbroken response to meeting the needs of changing healthcare and changing roles of nurses within society.
- Meaningful partnerships with alumni and key community players to serve Memphis and the Mid-South, as well as the global health care needs through nursing.
- **Significant opportunities for growth as a Center for Excellence:**
  - **Excellence in Nursing Education** through innovative preparation of competent nursing professionals and leaders that meet local and global healthcare needs.
  - **Excellence in Nursing Research** via interdisciplinary scholarship and research that enhances nursing knowledge and improves health care.
  - **Excellence in Nursing Professional and Community Service** through integrated partnerships that connect education, practice, and research to meet public needs.

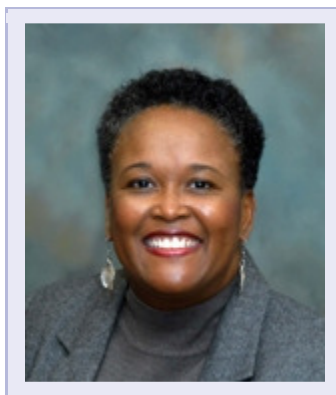
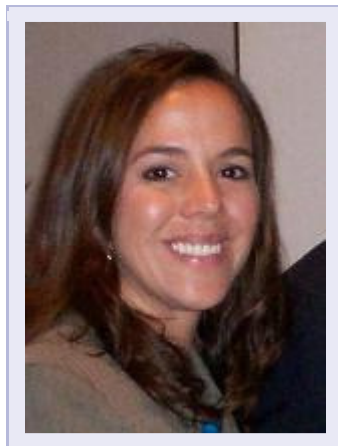
Join us today in our journey toward an even greater level of excellence at the Loewenberg School of Nursing! [www.memphis.edu/nursing](http://www.memphis.edu/nursing)

## Alumni News



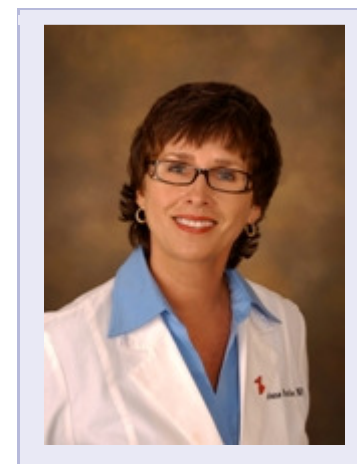
LSON's first cohort of Executive MSN students graduated in August. "I am extremely proud to say that I am a member of the first graduating class of Executive MSN nurses," shares **Laura Hess**, EMSN, RN. Fellow alumna **Rhonda Davis**, EMSN, RN, agrees that being "a part of the first class of EMSN students is an honor." The EMSN curriculum is modeled after and designed in collaboration with The Robert Wood Johnson Foundation (RWJF) Executive Nurse Fellows Program, the American Nurses Credentialing Center's 14 Forces of Magnetism, and the American Organization of Nurse Executives. "The EMSN program impacted my career, therefore I felt strongly about joining the LSON Alumni Chapter and giving back," says Davis.

**Hess** joined the LSON Alumni Chapter because she wanted to maintain a connection with the program that allowed her to establish a career as a nurse and, now, to advance in that career. “I will be able to make a difference in the future of healthcare through the experience, knowledge, and connections I have established with and through the U of M’s Loewenberg School of Nursing.” In fact, Hess was recently appointed as a 2010 Tennessee Center for Performance Excellence, TNCPE, examiner and ambassador. As an examiner, Hess is responsible for reviewing and evaluating organizations that apply for a TNCPE Award. Examiners meet the highest standards of achievement and peer recognition in their fields.



**Mona Newsome Wicks, PhD, RN**, will be inducted as a Fellow in the American Academy of Nursing during the Academy’s 37th Annual Meeting and Conference on November 13, 2010 in Washington. “Selection for membership in the Academy is one of the most prestigious honors in the field of nursing,” said Academy President Catherine L. Gilliss, DNSc, RN, FAAN. “Academy Fellows are truly experts.” Dr. Wicks received her Associate and BSN degrees in nursing from the University of Memphis in 1978 and 1981, her MSN from the University of Tennessee Health Science Center (UTHSC) in 1987, and her Ph.D. from Wayne State University in 1992. She is currently a Professor and Associate Dean for Research at UTHSC College of Nursing in Memphis. [Read more.](#)

**Kathy Diane Vaughn Butler, DNP, RN, FNP-BC, NP-C**, recently received her Doctor of Nursing Practice degree from Oakland University in Rochester, Michigan. Dr. Butler received her BSN from the University of Memphis in 1985, her MSN from UTHSC in 1987, and her Post-Master’s FNP Certificate from Belmont University in 1995. She is certified as a family nurse practitioner by both the American Nurses Credentialing Center and the American Academy of Nurse Practitioners. Dr. Butler practices in Jackson, TN.



If you have professional news to share with your LSON family, please send an email with your news, name, and contact information to [nursing@memphis.edu](mailto:nursing@memphis.edu).

#### Announcements for Alumni

- Harvard School of Public Health is looking to enroll a new cohort of 100,000 young female nurses, RNs and LPNs between 22 - 45 years of age, to participate in the latest phase of their Nurses’ Health Study: Nurses’ Health Study III. To learn more and to join, please visit [www.nhs3.org](http://www.nhs3.org).

- In September, the [LSON Alumni Chapter](#) Board of Directors met to plan activities for the year. **We are interested in hearing you!** Look for a new fan page on Facebook in early 2011 and, please, let us know how we can help you be the best nurse you can be.
- Thank you to all of our alumni who thoughtfully, and generously, [support LSON](#). Your gifts provide resources to meet the needs of our current students and expand our educational and simulation programs. Join our current donors today as they strengthen our School!

## Student and Program Successes

**Enrollment in the Loewenberg School of Nursing is up!** Nearly 900 students enrolled this fall as either undergraduate or graduate students. Annual LSON enrollment has grown by nearly 65% over the last five years to a total of 845 BSN and MSN students.

**Our tradition of excellence continues.** The CCNE Board of Commissioners acted at their April 2010 meeting to grant reaccreditation of the baccalaureate degree program in nursing and the master's degree program in nursing at the University of Memphis for the term of ten years, extending to 2020.

**Our 2009-2010 NCLEX pass rate of 97.7% speaks for itself!** Our well-prepared students are highly sought after as graduates by outstanding local and national clinical settings and Masters programs.

**International experiences are increasingly important** for health care professionals as they broaden their cultural awareness. For a second year, LSON Associate Professor Dr. Carolyn Speros led Nursing students enrolled in the [Global Perspectives Course](#) to unique and reputable hospitals and institutions in Europe, including the World Health Organization and the International Council of Nurses in Geneva.

## Faculty Accomplishments



### Grants

[Hoffman, Joy](#) (2010), Public Service funding for the *Foot Care Clinic for Homeless Men* at the Memphis Union Mission, \$1,300.

[Koch, Robert](#) (2010), "Emergency Air Medical Transport (AMT) Training Project", \$1.4 million. Department of Defense. [Read more.](#)

[Thomas, Joan](#) (2010), Advanced Education Nursing (AEN) Program, \$787,696. Health Resources and Services Administration (HRSA). [Read more.](#)

### Publications

[Dapremont, Jill](#). (in press, 2010). Success in Nursing School: Black Nursing Students' Perception of Peers, Family, and Faculty. *Journal of Nursing Education*. Manuscript #JNE-2010-253, Version 2.

[Finch, Linda](#). et.al. (2010). Marketing Nursing as a Profession: Integrated Marketing Strategies to Address the Nursing Shortage. *Health Marketing Quarterly*, 27(3), 291-306.

[Lee, Shirleatha](#). et.al. (in press, 2010). Pre-diabetes and Blood Pressure Effects on Heart Rate Variability, QT Interval Duration, and Left Ventricular Hypertrophy in Overweight-Obese Adolescents. *Journal of Pediatric Nursing*.

[Lee, Shirleatha](#) & [Dapremont, Jill](#). (in press, 2010). Engaging Nursing Students Through Integration of the Audience Response System. *Nursing Education Perspectives*.

#### **Presentations**

[Bargagliotti, Toni](#) (2010), Grapple with today's nursing leadership changes and develop strategies to meet tomorrow's challenges. Getting to tomorrow from today- Nursing leadership role in the future of healthcare: Lead your hospital through healthcare reform Conference. Nashville, TN.

[Lee, Shirleatha](#) & [Augusta, T](#) (2010), Evaluation of Anemia in Women with New York Heart Association Class III and IV Heart Failure, Tennessee Nurses Association Convention.

[Richardson, Teresa](#) (2010), *Building effective educational - clinical partnerships. Enhancing Nursing Undergraduate Teaching and Learning in the Clinical Settings: What do we know and how do we move forward?* Conference. Robert Woods Johnson Foundation.

[Speros, Carolyn](#) (2010), Promoting Health Literacy: An Advanced Nursing Practice Imperative. 6th International Council of Nurses' Advanced Practice Nursing Conference, Brisbane, Australia.

#### **Journal Reviews**

[Zhan, Lin](#) (2010). Manuscript review, Predictors of Diabetes Outcomes of Low-Income Residents in Mexico: A Replication Study. *Journal of Nursing Research*.

[Zhan, Lin](#) (2010). Manuscript review, Aerobic exercise in older persons with dementia: A case study. *Journal of Gerontological Research. Journal of Gerontological Nursing*.

#### **Awards**

[Zhan, Lin](#) (2010), *Outstanding Leadership in Nursing and Education Award. The National League for Nursing's Annual Education Summit*. Caesars Palace, Las Vegas.

## **Subscribing To This Newsletter**



If you received this e-mail from a friend and want to subscribe, simply e-mail us at [nursing@memphis.edu](mailto:nursing@memphis.edu). To ensure this newsletter appears in your inbox, add [nursing@memphis.edu](mailto:nursing@memphis.edu) to your address book.

You may also want to forward this newsletter to a friend! If you know a friend who would like to receive this newsletter, please e-mail us at [nursing@memphis.edu](mailto:nursing@memphis.edu). If you no longer wish to receive these emails, please reply to this message with "Unsubscribe" in the subject line.

#### **Contact Us**

Loewenberg School of Nursing - 100 Billy Mac Jones Building - Memphis, TN 38152 phone: 901.678.2003 - fax: 901.678.4906 - web address: [www.nursing.memphis.edu](http://www.nursing.memphis.edu).

#### **About This E-Mail**

The LSON Horizons Newsletter has been converted to an electronic format for the alumni and friends of the Loewenberg School of Nursing. Our goal is to keep you informed about the alumni activities, student successes, and faculty accomplishments of the Loewenberg School of Nursing. Please share your comments and suggestions by emailing us [nursing@memphis.edu](mailto:nursing@memphis.edu)

*The University of Memphis is one of 45 institutions in the Tennessee Board of Regents system, the sixth largest system of higher education in the nation. It is an Equal Opportunity/Affirmative Action University committed to education of a non-racially identifiable student body.*