

THE UNIVERSITY OF  
**MEMPHIS**®

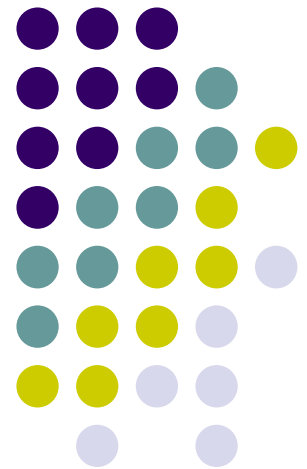
---

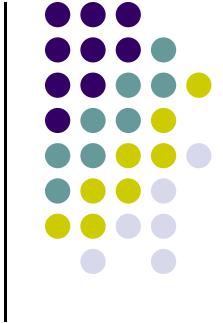
# Academic Space Plan

Space Policy Council Meeting

November 27, 2007

Space Planning and Utilization





**“Saddest Cubicle -  
2007”**

**Is on a University  
Campus**

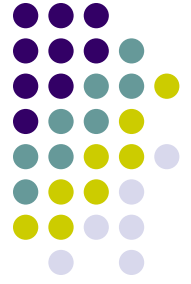
## AGENDA:

### 1. Space Updates:

- McWherter Library
  - Library Learning Commons/Einstein Bagels
  - Hooks Institute
  
- Clinical Sciences Facility for Nursing and Speech and Hearing programs is in the programming stage on the Park Avenue Campus
- Administration Building
  - Staff Senate
  - Vice President for Communications, Public Relations and Marketing
  
- Jones Hall – Information Technology Division new Machine Room on first floor
  - Administration Building first floor Information Technology space study underway
  
- Browning Hall
  - CREP and TOADS – space needed for new hires
  - Employee Health and Safety relocated to existing Business and Finance space in Administration Building Annex second floor
  
- Defense Audit Building – Second Floor
  - Speech and Hearing Center negotiated lease for the majority of the Second Floor
  - Building #44 – CREP occupying to provide space in Browning for new Nursing faculty and College of Education new research hire
  - State Department of Education – University negotiated a sub-lease to provide space vacated in Scates Hall for Interdisciplinary Studies
  - Remaining space – four offices on hold for SAS Training
  
- Confucius Institute
  - Temporary location – Administration Building fourth floor
  - Wilder Tower – Wilder Tower 11th floor

### 2. Academic Space Plan

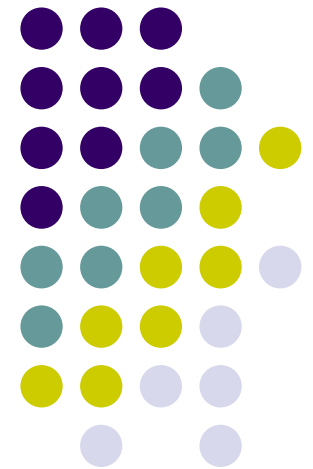
### 3. Space Planning Web Site

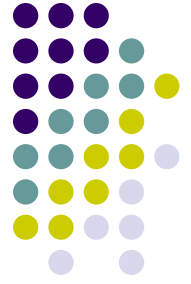




# New University Center Opens

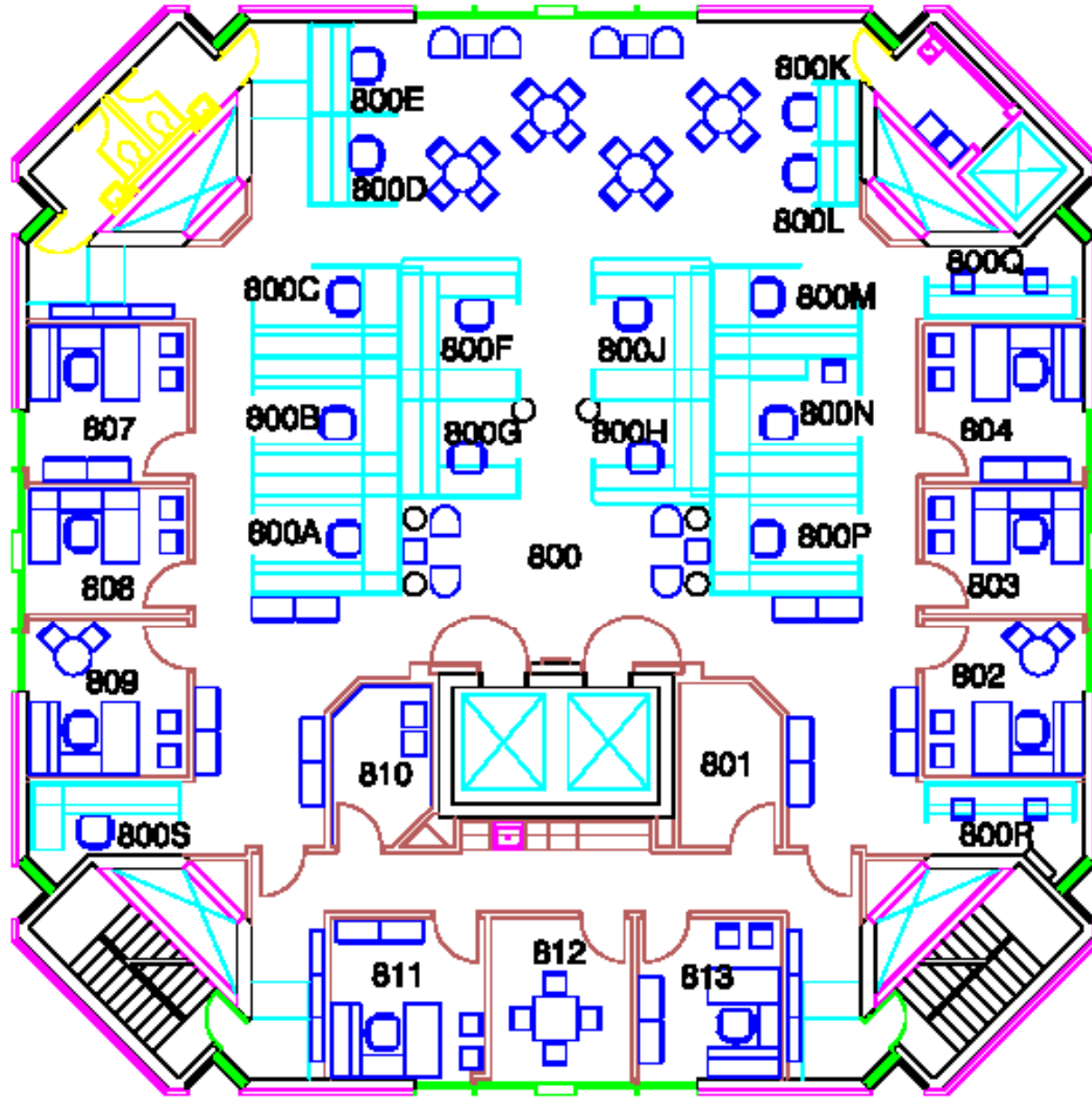
---





## Wilder Tower 8<sup>th</sup> & 9<sup>th</sup> Floor

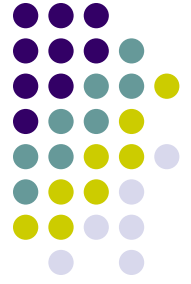
- 5,100 assignable square feet each floor
- Provide space for University research projects



# Wilder Tower

8<sup>th</sup> Floor

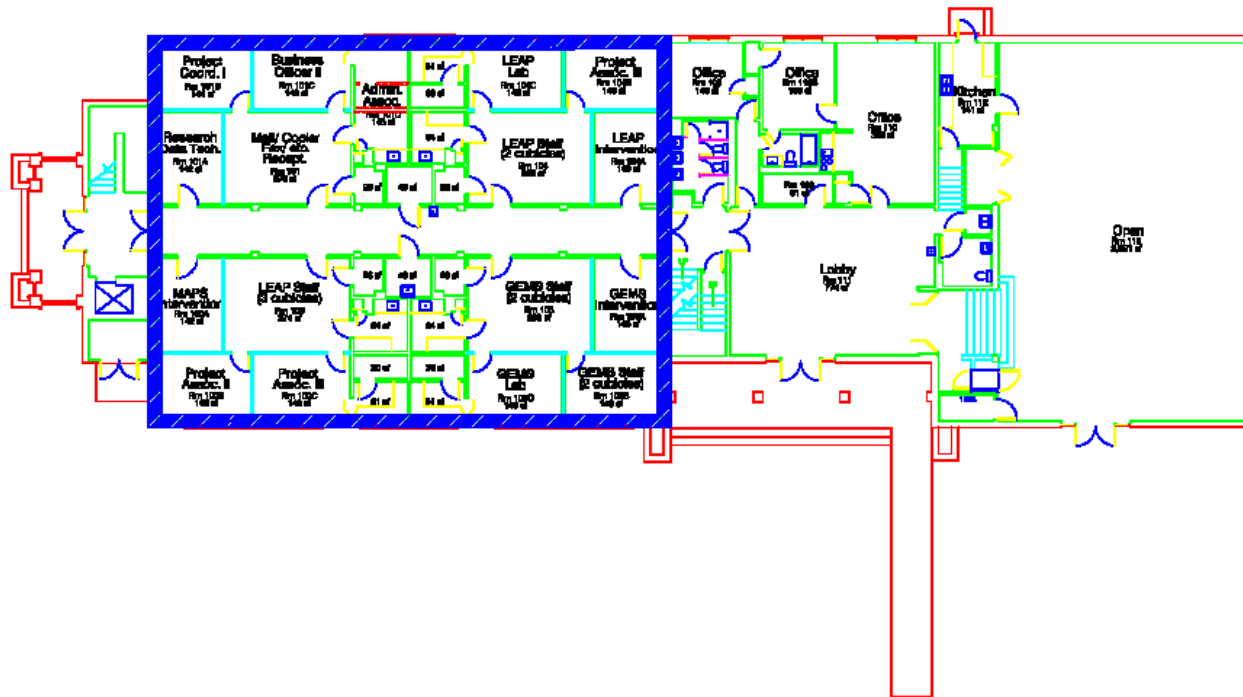
(Typical Tower Floor)



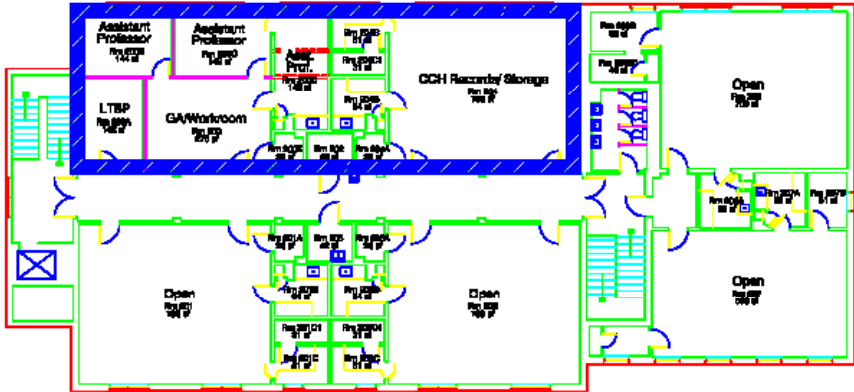
# Panhellenic Building

- 13,026 assignable square feet
- Center for Community Health (5,671 sq. ft.) from Billy Mac Jones Building
- Remainder for Psychology research
- BMJ Building provide growth space for Nursing, Development, and Alumni

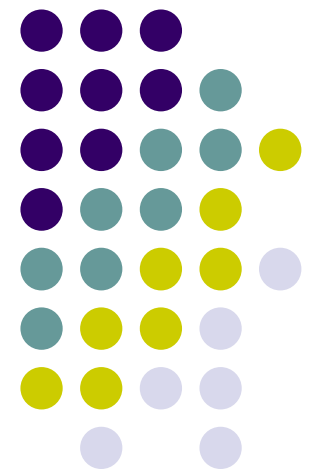
Center for Community Health



Center for Community Health



# Law School relocates to downtown



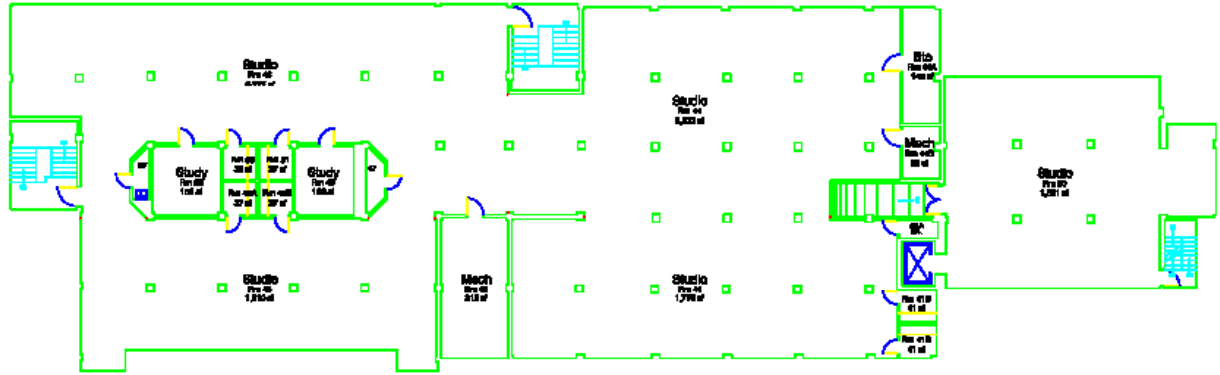


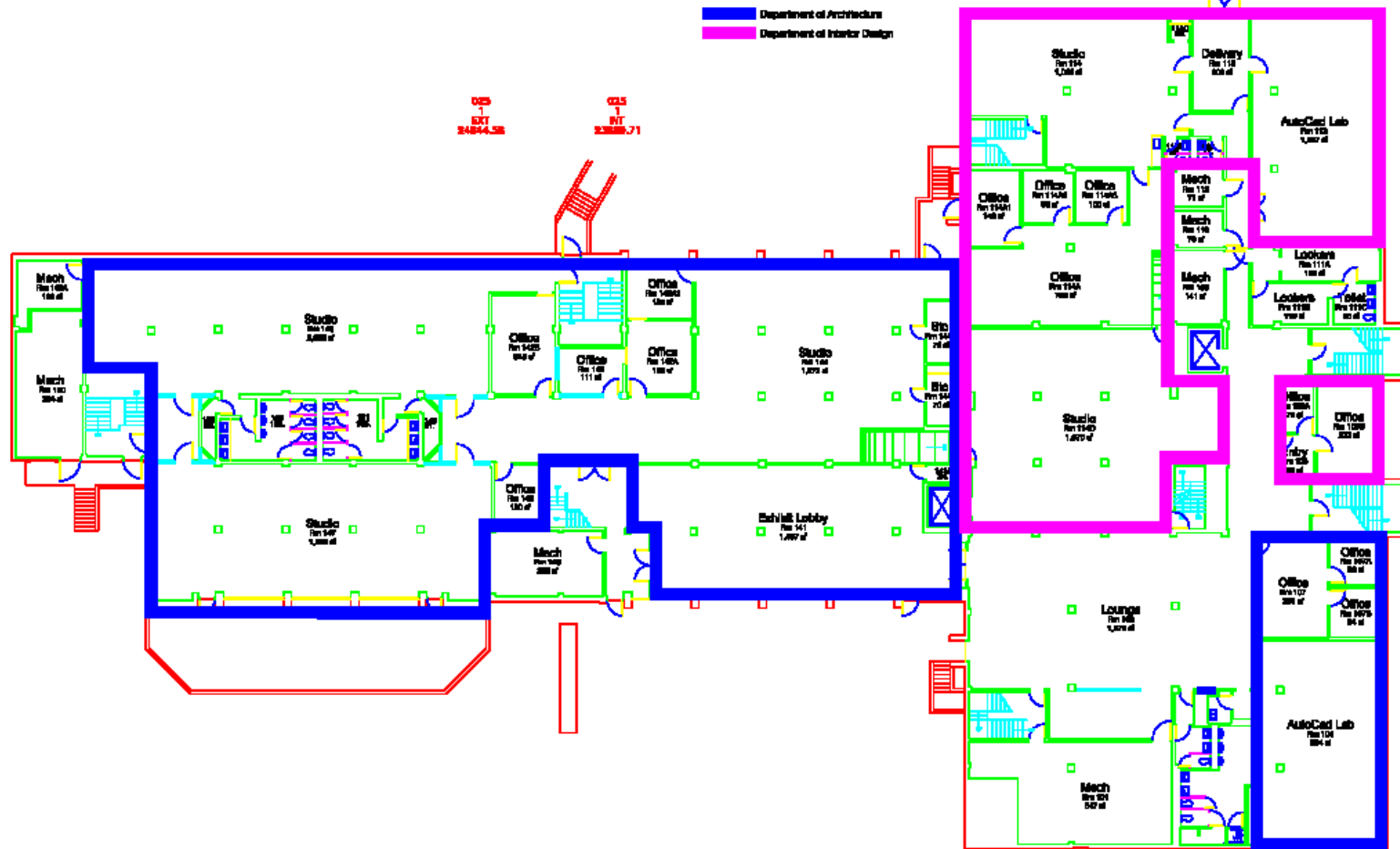
# Law School Building

- 59,809 assignable square feet
- Relocate Art Department (37,984 sq. ft.) from Jones Hall
- Relocate Communications (12,187 sq. ft.) from Theatre Communication Building
- Relocate Foreign Language (14,596 sq. ft.) from Dunn Hall to Jones Hall

025  
B  
021  
13221.24

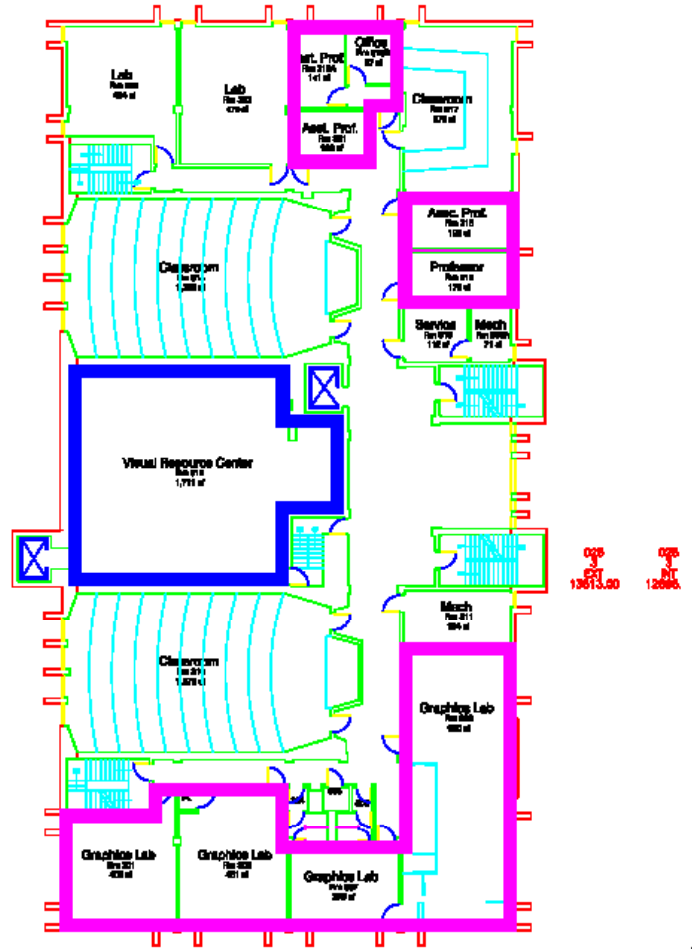
025  
B  
021  
12221.00

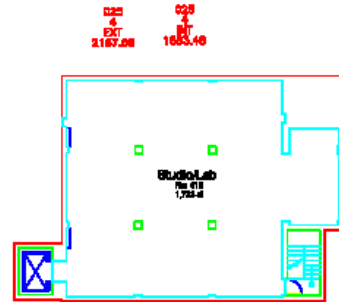




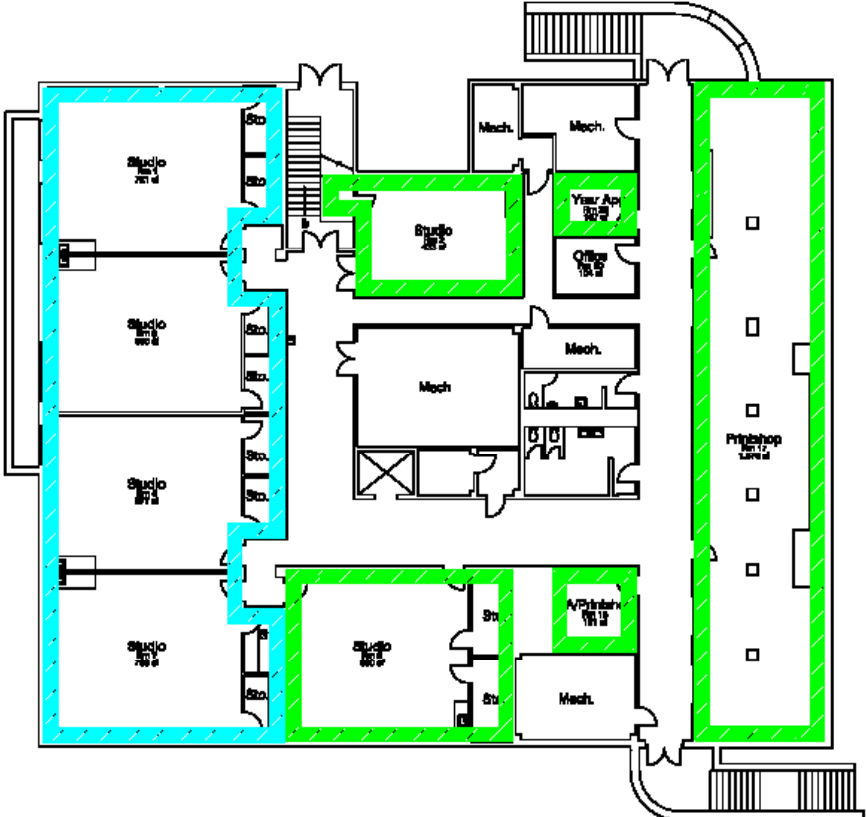


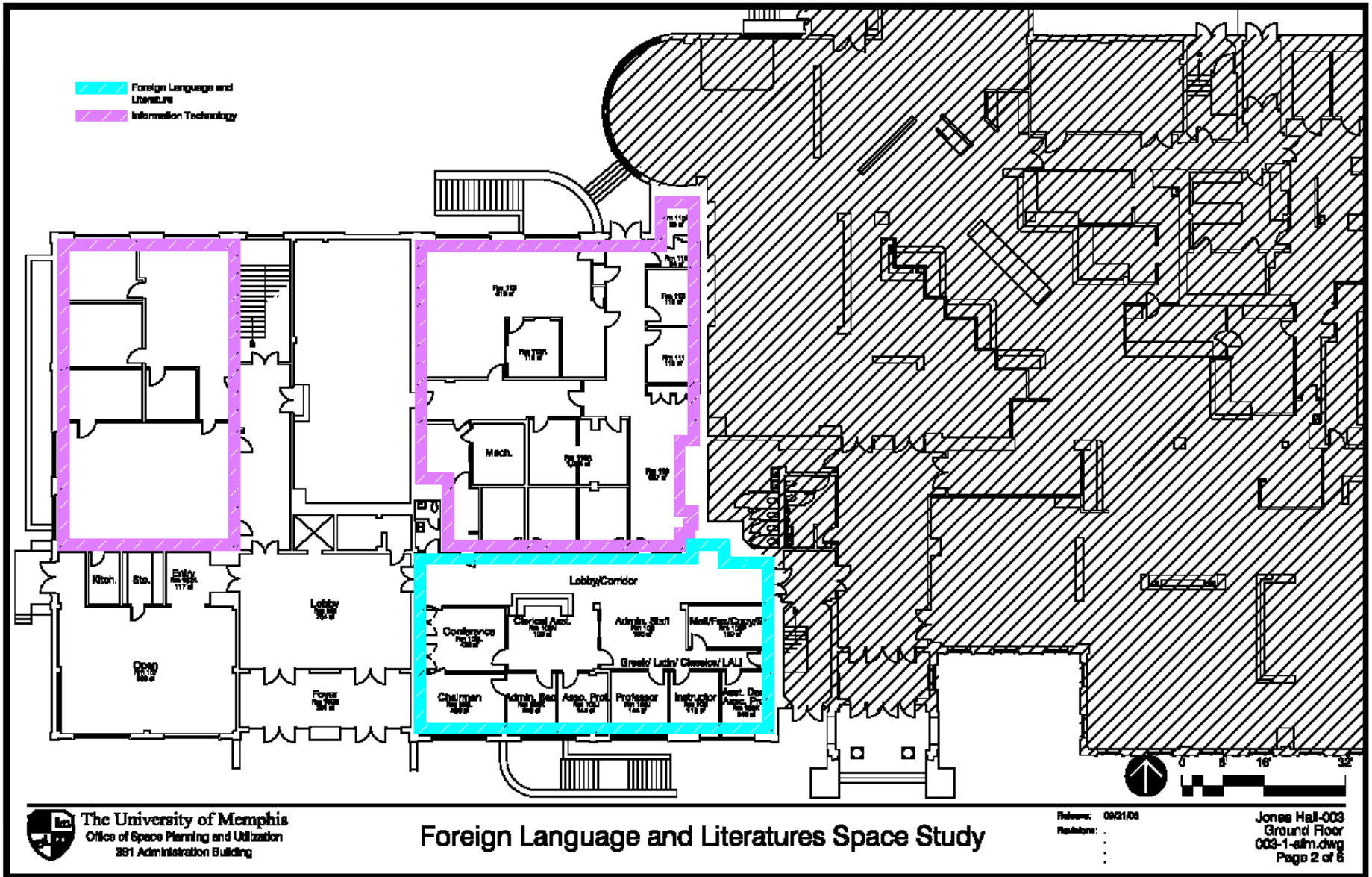
Department of Graphic Arts  
 Department of Art





Art Department - General  
 Fine Arts Department





- Foreign Language and Literatures
- Spanish Department
- French Department
- German Department

