

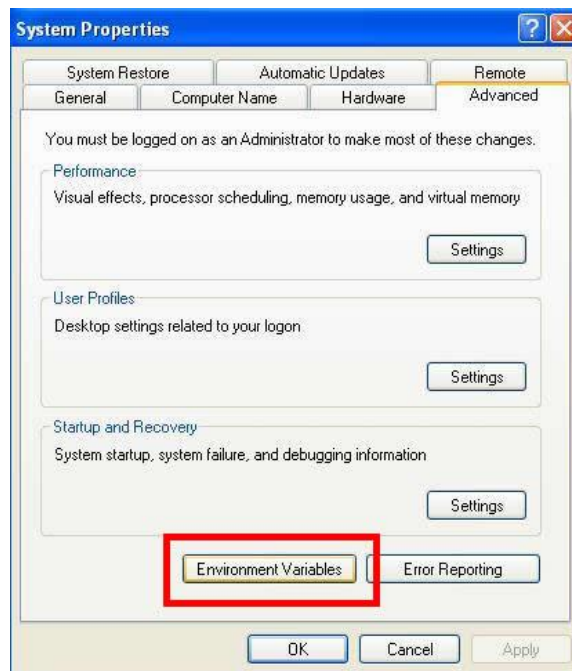
Check out a SPSS 16 commuter license for 30 days while connected to the UofM network

First, adjust the maximum check-out time for your SPSS 16 commuter license.

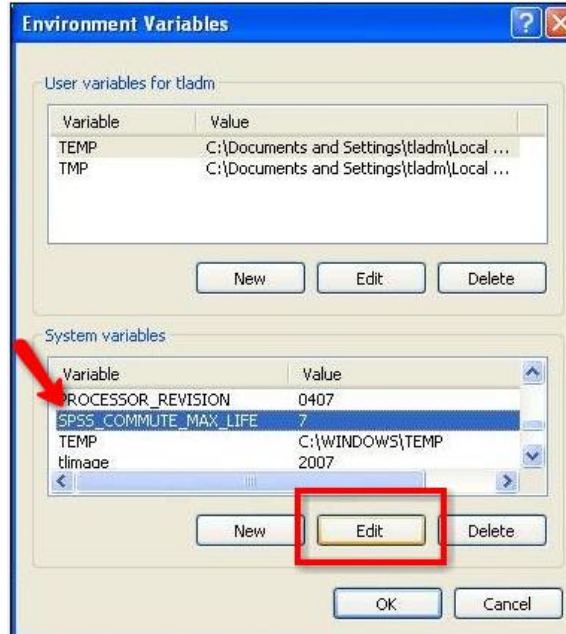
1. Right-click **My Computer** on your desktop
2. Select **Properties** from the drop-down menu



3. Click **Environmental Variables**



4. Select **SPSS_COMMUTE_MAX_LIFE** from the System variables list
5. Click **Edit**



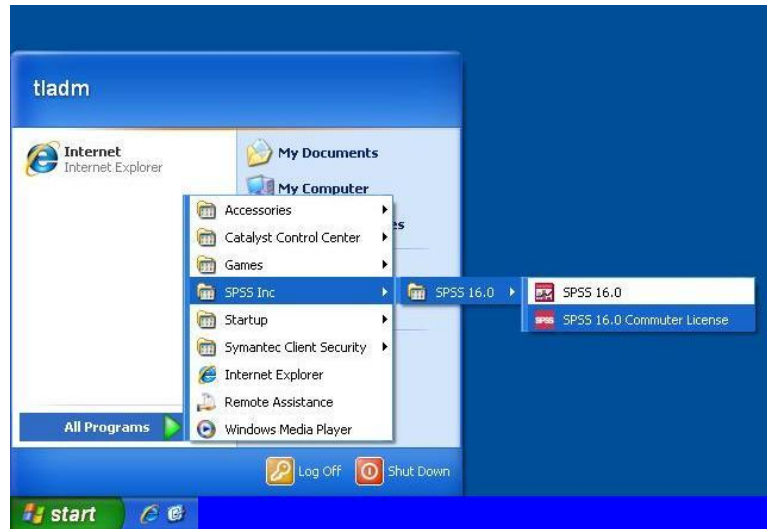
6. Type **30** in the Variable value field
7. Click **OK**



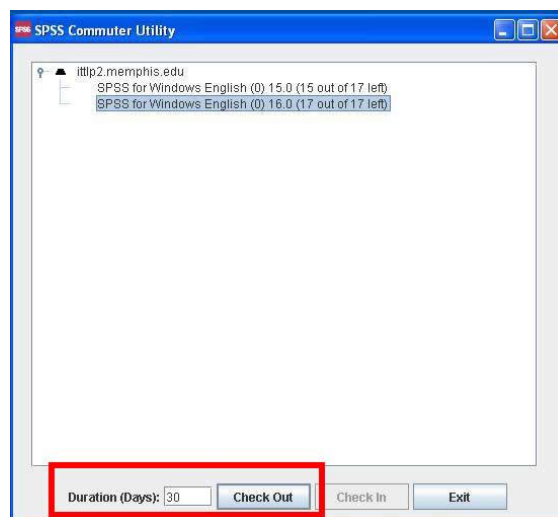
The maximum check-out time for your SPSS 16 commuter license is now set at 30 days.

Next, check out a SPSS 16 commuter license for 30 days.

1. Click **Start** in the lower-left corner of your desktop
2. Select **All Programs** from the pop-up menu
3. Select **SPSS Inc**
4. Select **SPSS 16.0**
5. Select **SPSS 16.0 Commuter License**



6. Type **30** in the Duration (Days) field
7. Click **Check Out**



The SPSS 16 Commuter License is now checked-out for 30 days.