



UofM Secure Wireless

Center for Teaching and Learning (CTL)

100 Administration Bldg., Memphis, TN 38152

Phone: 901.678.8888

Email: itstrainers@memphis.edu

[Center for Teaching and Learning Website](#)

Table of Contents

Table of Contents	1
Connecting on a Mac	3
Connecting on an iPad or iPhone	5
Connecting on a PC - Windows 7	7
Connecting on a PC - Windows 10.....	10
Connecting on an Android or Tablet	13
Service Desk Request.....	15
Submitting a Ticket	15
Calling the ITS Service Desk	15
Email umTech	15
Important Links	15
• uofm-secure web page	15
• Explore the umTech Website	15

Purpose

This training material highlights how to access the **uofm-secure** wireless network.

Audience

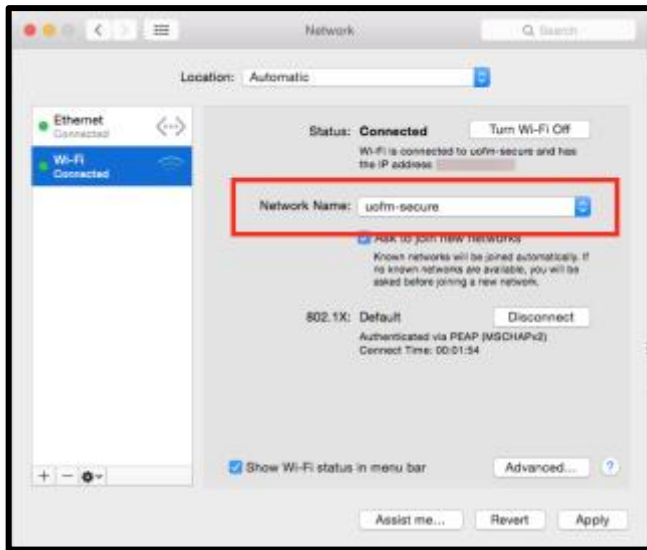
University of Memphis faculty, staff, or students that will be connecting to the on campus **uofm-secure** wireless network.

UofM Secured Wireless

Connecting on a Mac

1. Select **uofm-secure** from system preferences or wireless network menu.

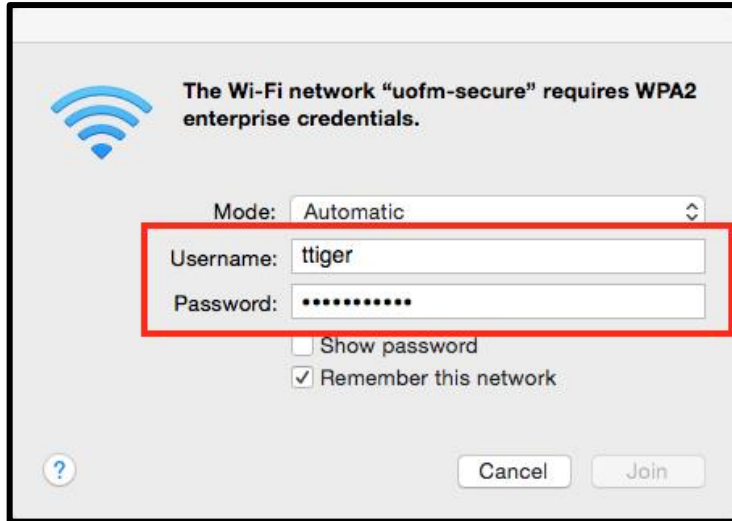
From system preferences



From wireless network menu



2. Sign in with your Username UUID (first part of your email address) and password. In this example, Tom Tiger's user name is used.



3. Click **Continue** to authenticate to network uofm-secure.



Next, you may be asked to store the credentials for **uofm-secure** in your keychain. You can **Always Allow**, **Deny**, or **Allow**.

Connecting on an iPad or iPhone

1. Go to your system **Settings**.



2. Select **Wi-Fi**, then choose **uofm-secure** from the list of network choices.



3. Enter your **Username** UofM UUID (first part of your email address) and **Password**. In this example, Tom Tiger's user name is used.



4. A window may pop up asking you to trust the certificate, click **Trust**.

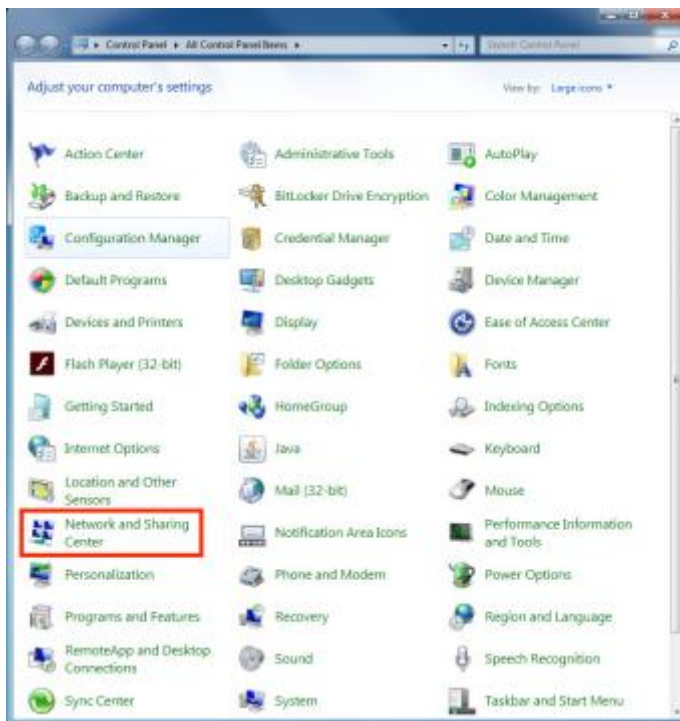


Connecting on a PC - Windows 7

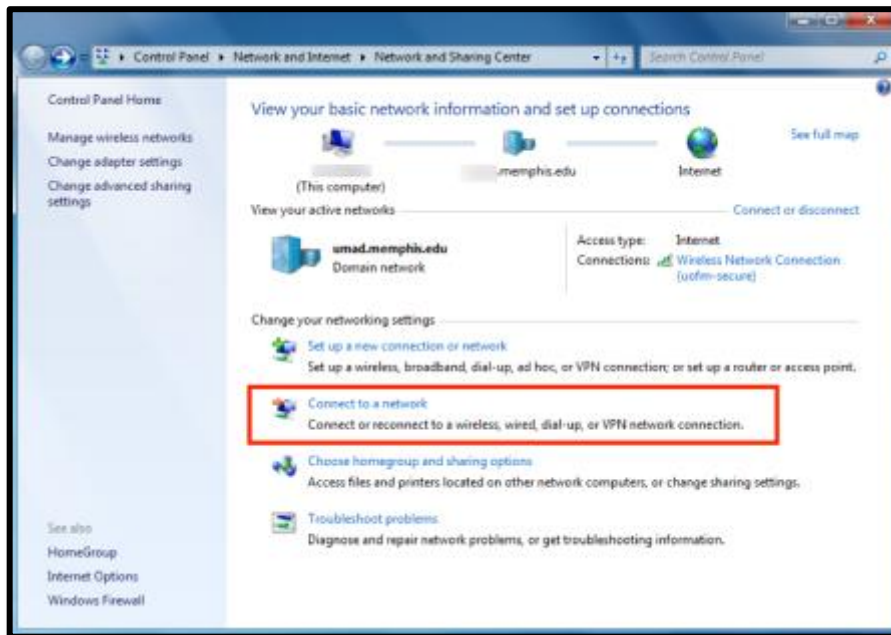
1. From the start menu (A) select the windows icon, then (B) select the Control Panel.



2. Select **Network and Sharing Center** from the list of choices.



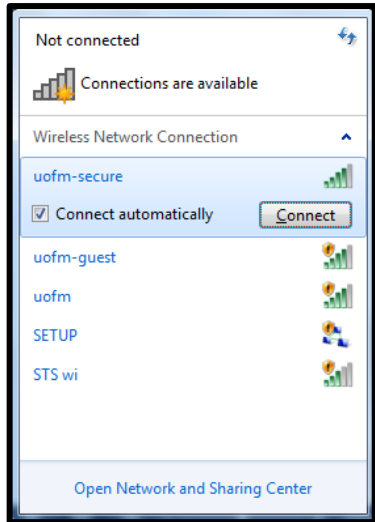
3. Open **Networking and Sharing Center**. Select **Connect to a network**.



4. From available wireless connections, choose **uofm-secure**.



5. Click, **Connect**.



6. You will be prompted to (A) enter your UUID (first part of your email address) and password. In this example, Tom Tiger's user name is used. (B) Click **OK**.

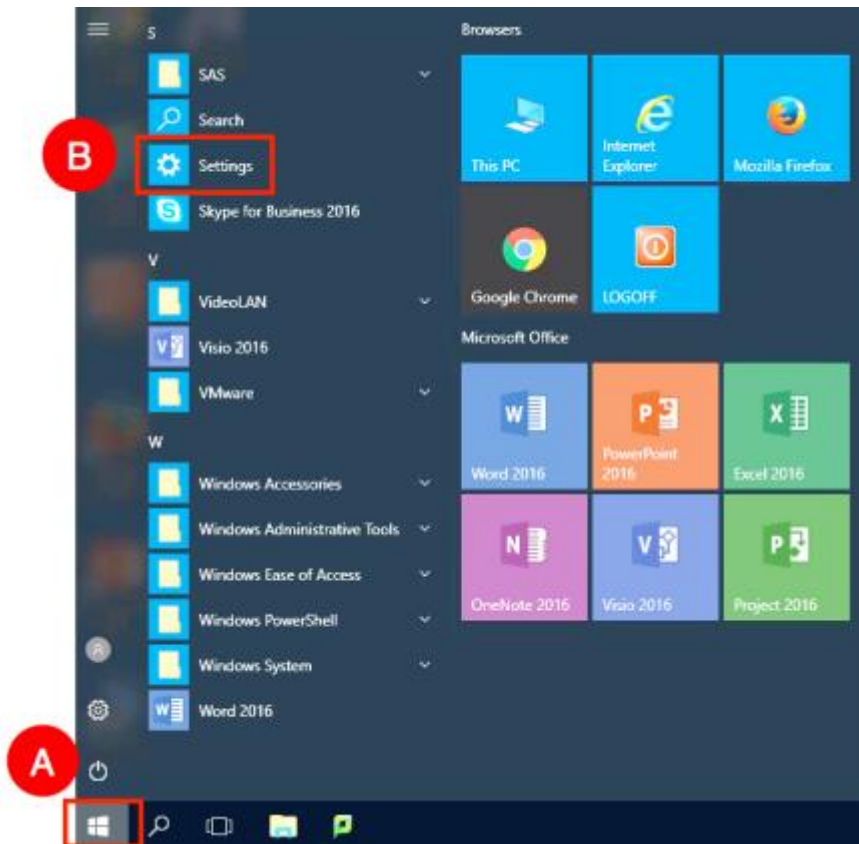


7. Next, you will receive a **Windows Security Alert - The connection attempt could not be completed**. Click **Connect**.



Connecting on a PC - Windows 10

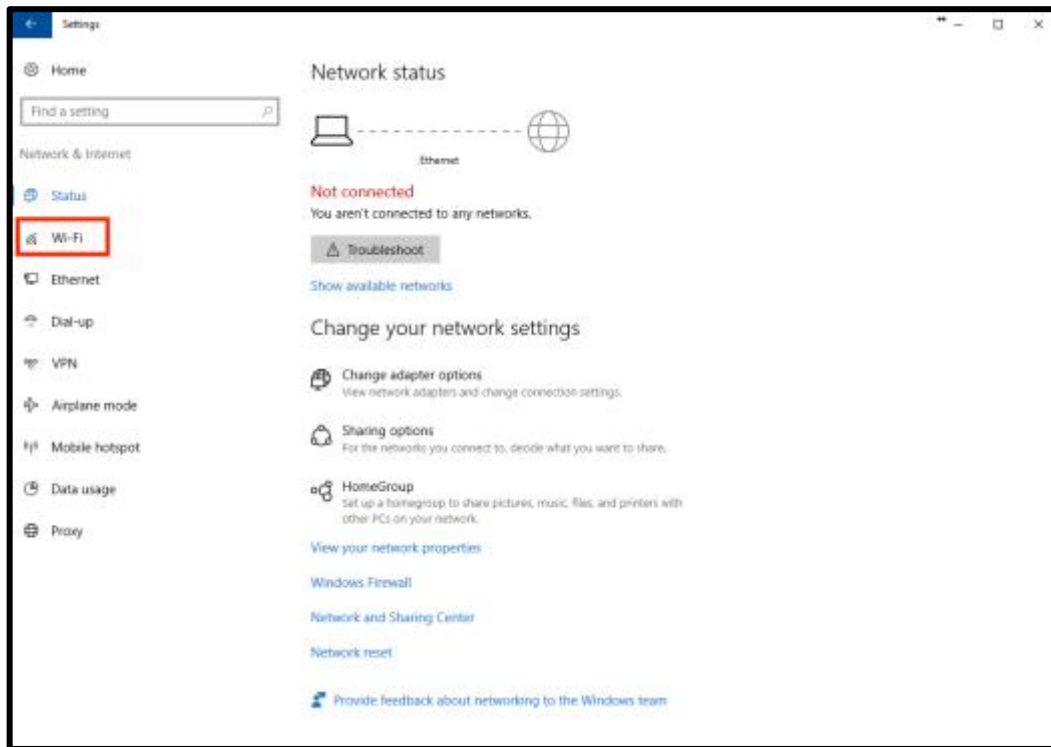
1. From the start menu (A) select the windows icon, then (B) select Settings.



2. Open Windows Settings. Select Network & Internet.



3. Select **Wi-Fi**.



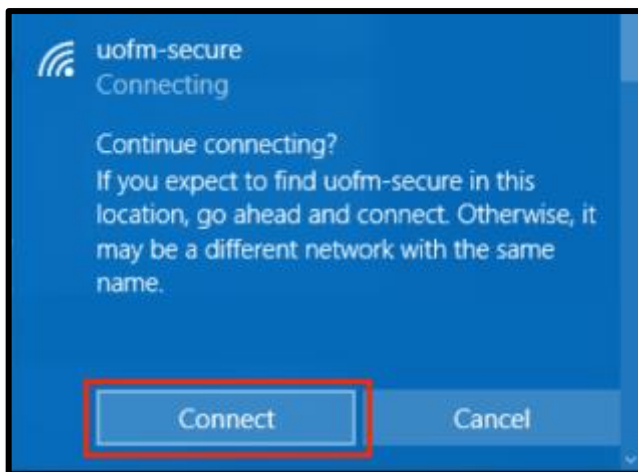
4. Click, **Connect**.



5. You will be prompted to (A) enter your UUID (first part of your email address) and password. In this example, Tom Tiger's user name is used. (B) Click **OK**.



6. Next, you will receive a Windows Security Alert - **Continue connecting?** Click **Connect**.



Connecting on an Android or Tablet

1. Go to your device **Settings**.



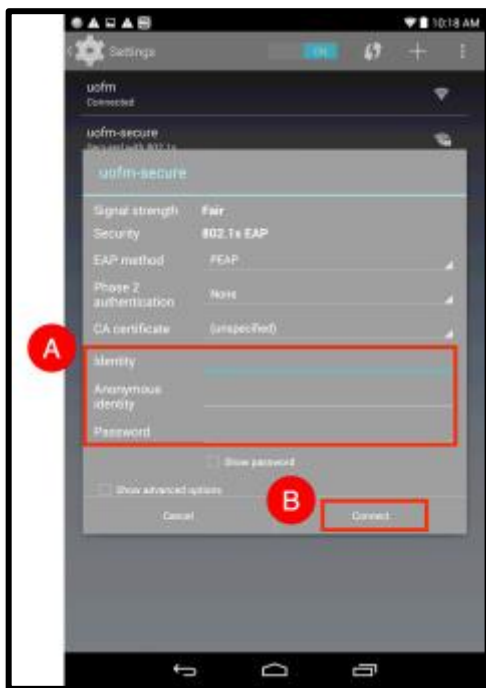
2. Make sure that your **Wireless** has been activated for the device.



3. Select **uofm-secure** from the wireless networks.



4. (A) Enter your UUID (first part of your email address) and password. In this example, Tom Tiger's user name is used. (B) Click **Connect**.



Locating Help Resources

Upon completing the training covered in this course, faculty, staff, and students are able to receive additional training help and resources. Such help can be located as follows:

Service Desk Request

Submitting a Ticket

- Login URL:
 - [Here is a link to our service desk ticketing system](#)
 - After logging in, choose the link **Request Help or Services**.
 - Choose Request Help or Services.

Calling the ITS Service Desk

- Call the Service Desk (901.678.8888) for immediate assistance with login problems or issues with using the Service Desk Request Form. Service agents work 24 x 7, except when the University is closed.

Email umTech

- Email at umtech@memphis.edu (Using this email will automatically generate a help desk ticket). Please keep your Service Desk ticket number for faster assistance.

Important Links

- [uofm-secure Website](#)
- [Explore the umTech Website](#)
- [Center for Teaching and Learning \(CTL\) Website](#)
- [Search our Training and Documentation](#)