



Police Dispatcher (Emergency) 901-678-4357  
Regular Business and Investigations 901-678-3848

Tiger Patrol (Personal Escort) 901-678-4663  
Victim Services 901-678-4471

[www.memphis.edu/police](http://www.memphis.edu/police)  
[police@memphis.edu](mailto:police@memphis.edu)



LiveSafe – Two-way direct text communication with police dispatch for students

<https://www.memphis.edu/police/livesafe.php>

Annual Security & Fire report:

[www.memphis.edu/police/pdf/annualsecurityfire.pdf](http://www.memphis.edu/police/pdf/annualsecurityfire.pdf)

All statistics for every jurisdiction and institution in the state: <https://crimeinsight.tbi.tn.gov/>

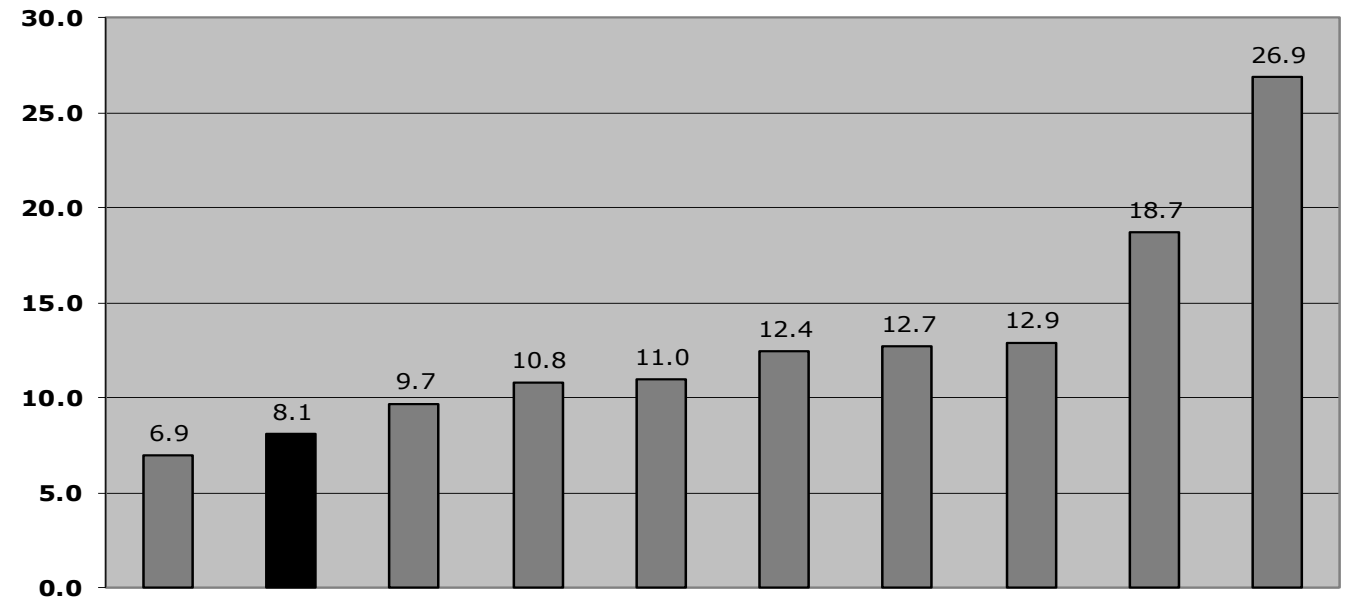


We annually compare Tennessee Bureau of Investigation (TBI) statistics for ALL reported incidents with the following schools, which have more than 5,000 students and a campus police department.

APSU in Clarksville, ETSU in Johnson City, MTSU in Murfreesboro, TN Tech in Cookeville, University of Memphis, UT – Knoxville, UT – Martin, UT – Chattanooga, TN State U in Nashville, and Vanderbilt in Nashville.

Our incident rate in 2020 was 8.1 per 1000 campus population.

Crime rate per 1000



# Faculty Role and Resources



## Things to Know and Actions to Take



- *LiveSafe*: enroll and encourage students to enroll.



- Crisis Management resources:  
<http://www.memphis.edu/crisis/>



- Behavioral Intervention Team, Campus Police Department, Crisis Management Team.

# Faculty Role and Resources



**University of Memphis**  
EMERGENCY ACTION PLANS

YOU ARE HERE

|   |   |
|---|---|
| <p><b>FIRE</b></p> <ul style="list-style-type: none"> <li><b>PULL</b> Pull if you can</li> <li><b>Crawl</b> To avoid smoke</li> <li><b>EXIT</b> Building</li> <li><b>DO NOT USE ELEVATOR</b></li> </ul> | <p><b>EARTHQUAKE</b></p> <ul style="list-style-type: none"> <li><b>DROP</b> To the floor</li> <li><b>COVER</b> Protect your head</li> <li><b>HOLD</b> On until shaking stops</li> </ul>   |
| <p><b>TORNADO</b></p> <ul style="list-style-type: none"> <li><b>GO</b> To lowest floor/interior wall</li> <li><b>AVOID</b> Windows and doors</li> <li><b>WAIT</b> For the all clear</li> </ul>          | <p><b>ACTIVE THREAT</b></p> <ul style="list-style-type: none"> <li><b>RUN</b> Try to escape</li> <li><b>HIDE</b> Lock/Block Door and Do NOT Cluster</li> <li><b>FIGHT</b> If a Last Resort</li> <li><b>DO NOT PULL FIRE ALARMS</b></li> </ul> |

Sign Up for LiveSafe | Use the Crisis Management | Tiger Escort | Follow Us

**ON-CAMPUS EMERGENCY CALL: 901.678.HELP(4357)** | **OFF-CAMPUS CALL: 911**

- Include a classroom and building orientation as part of introduction at events/classes. *Discuss your plan.*
- Note on syllabi: <http://www.memphis.edu/crisis/> just as you would note the Inclement Weather hotline (678-0888). *Highlight resources.*
- Classroom placards developed by Seminar in Emergency Management students in cooperation with Crisis Management Team, Provost’s Office, and Physical Plant. *Updated resources.*

# University of Memphis

## EMERGENCY ACTION PLANS



### YOU ARE HERE

#### FIRE




-  **Pull**  
Alarm If You Can
-  **Crawl**  
To Avoid Smoke
-  **Exit**  
Building

**DO NOT USE ELEVATOR**

#### EARTHQUAKE

-  **DROP**  
To the Floor
-  **COVER**  
Protect Your Head
-  **HOLD ON**  
Until Shaking Stops

#### TORNADO

-  **GO**  
To Lowest Floor/Interior Hall
-  **AVOID**  
Windows and Doors
-  **WAIT**  
For the All Clear

#### ACTIVE THREAT

-  **RUN**  
Try to Escape
-  **HIDE**  
Lock/Block Door and  
Do Not Cluster
-  **FIGHT**  
As a Last Resort

**DO NOT PULL FIRE ALARMS**

Sign Up for  
LiveSafe  
[memphis.edu/police](http://memphis.edu/police)

UofM Crisis  
Management  
[memphis.edu/crisis](http://memphis.edu/crisis)

Tiger Escort  
901.678.4663 or  
[memphis.edu/police/tigerescort](http://memphis.edu/police/tigerescort)

Follow Us  
   
[@UofMemphis](https://twitter.com/UofMemphis)

**ON-CAMPUS EMERGENCY CALL:**  
**901.678.HELP(4357)**

**OFF-CAMPUS CALL: 911**  
Brought to you by the Crisis Management Team and EMGT 3100.