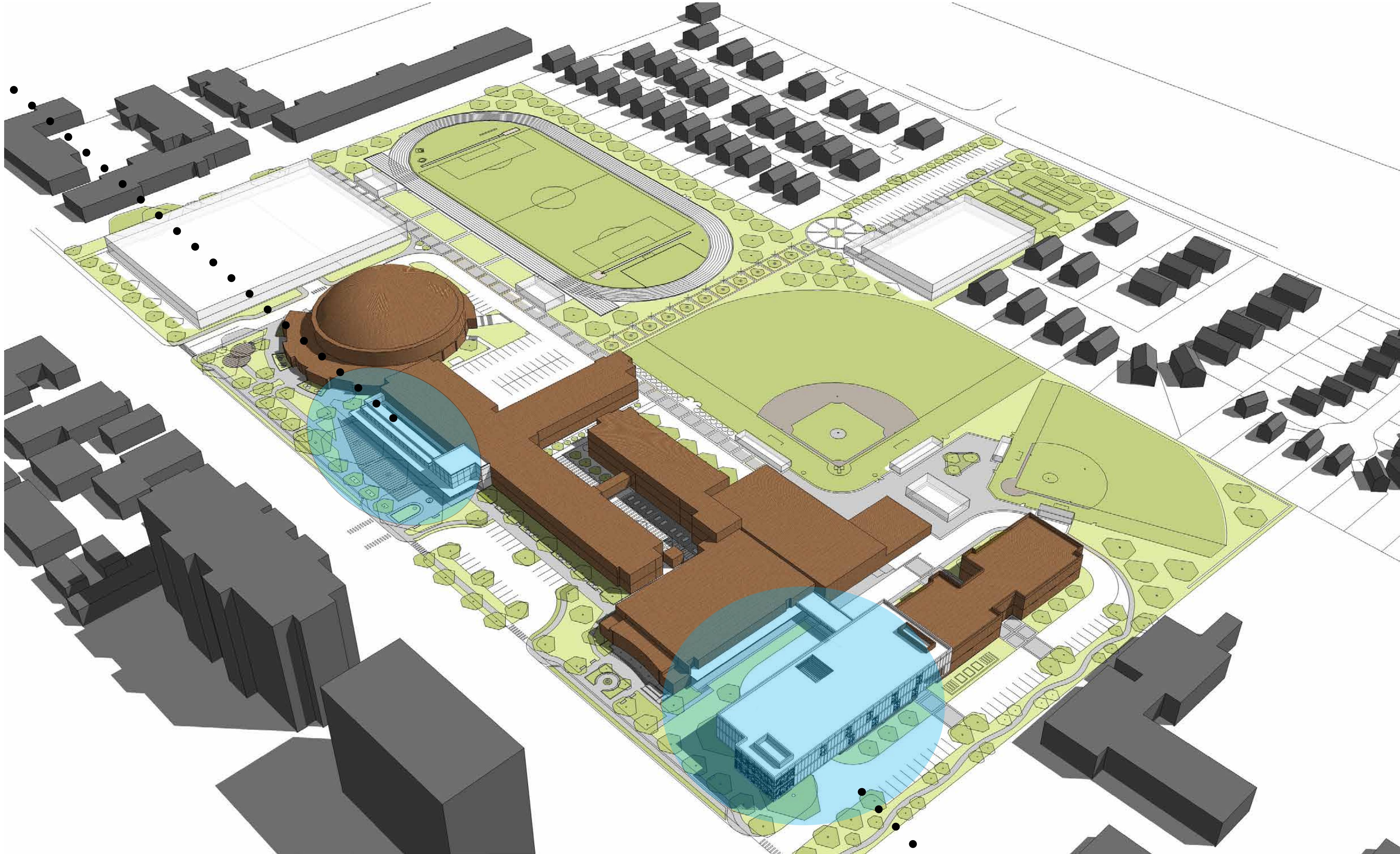


Classroom Addition ● Library Expansion

LIBRARY
EXPANSION



CLASSROOM
ADDITION



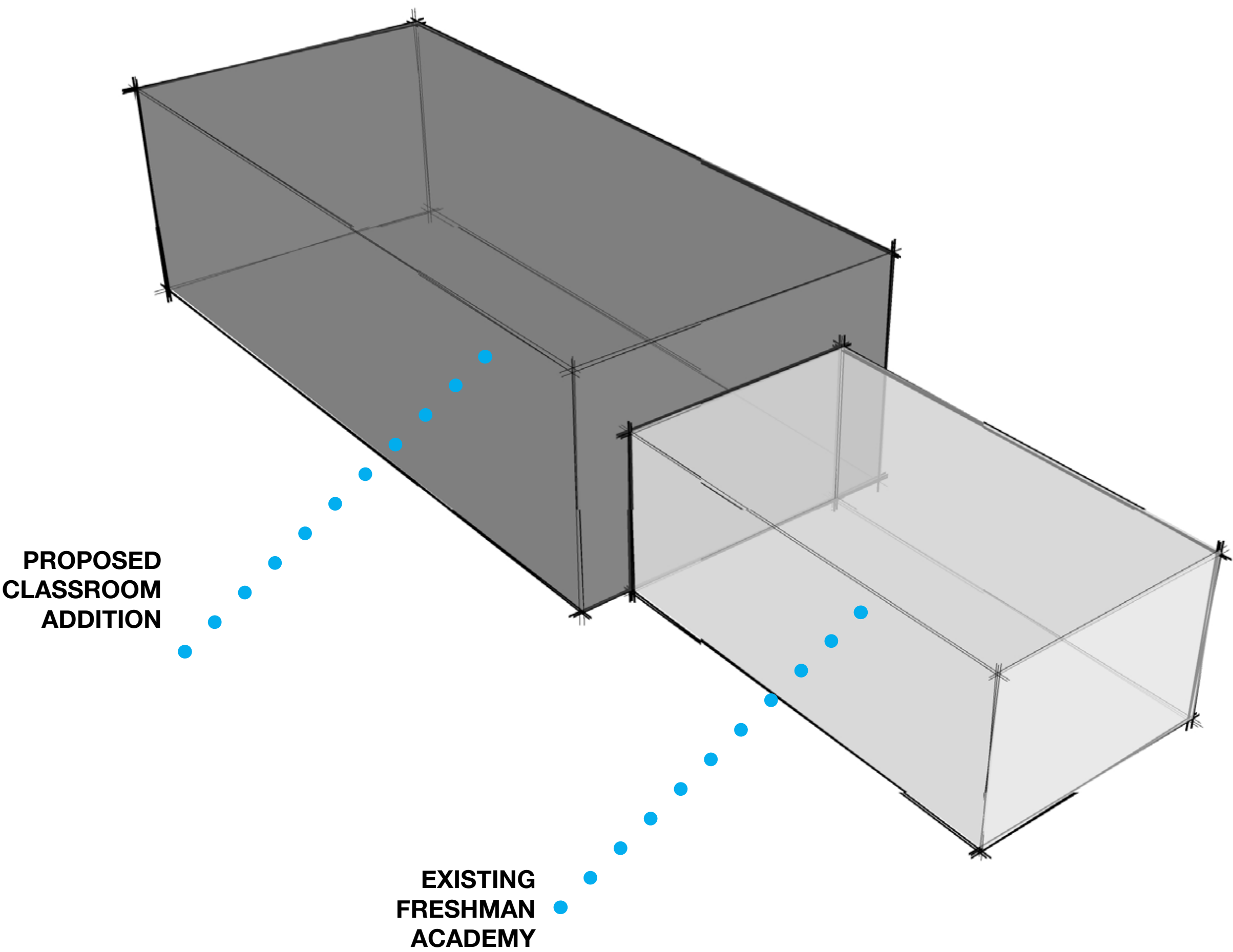
Classroom Addition | Concept - Site Plan

White Station High School Classroom Addition is located to the West of the Freshman Academy to accommodate the need for new classrooms to house displaced or “floating” teachers.

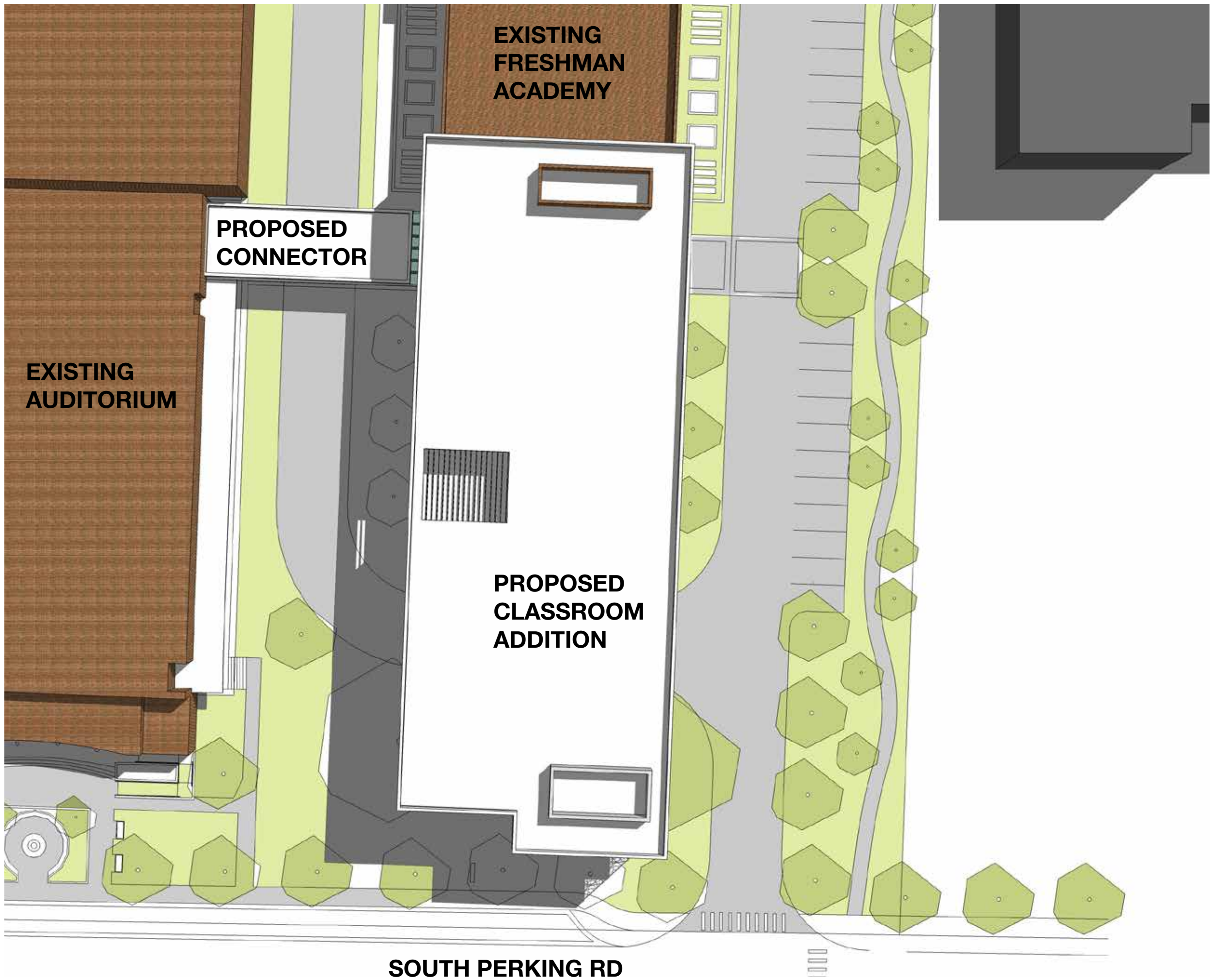
The proposed three story, 44,000 sf building adds 22 new classrooms, restrooms, lobby entrance, areas for gathering, and storage spaces. It also has an outside classroom located at the third floor. It is connected to the Freshman Academy on First and Second Levels.

The concept was to create a building that is indicative of a 21st Century high school and that respects the past while showing White Station High School is clearly part of the future.

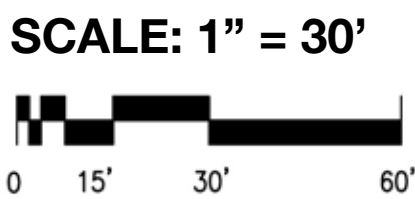
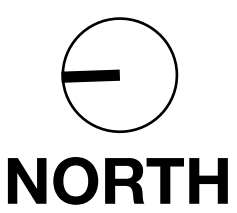
The project was conceived with the idea of visually modernize and bring White Station High School to the future. The materials chosen play a big role on this initiative. The existing buildings around the whole campus are made out of brick. To respect this and create a nice flow between the old buildings and the proposed new building, brick was used on the first level of the Classroom Addition, creating a strong transition between the new building and the existing Freshmen Academy. Metal panels were used on all upper level floors. They are not only attractive, but also easy to maintain. A great feature of the new building is a custom designed metal screen that acts as sun-shading devise to protect the West and North facade from direct sun exposure.



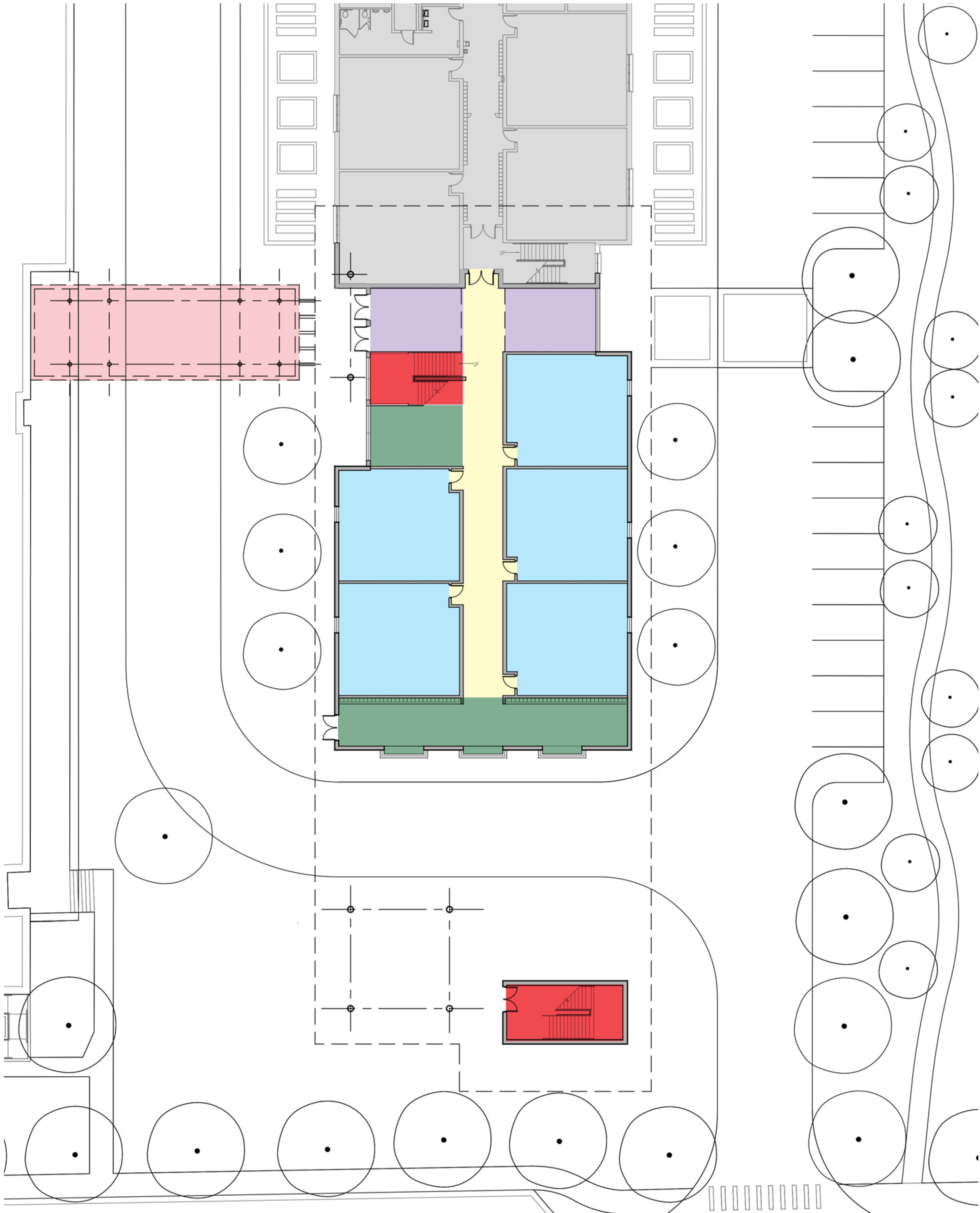
CONCEPT DIAGRAM



SITE PLAN



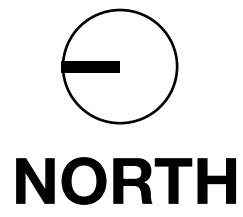
Classroom Addition | Floor Plan



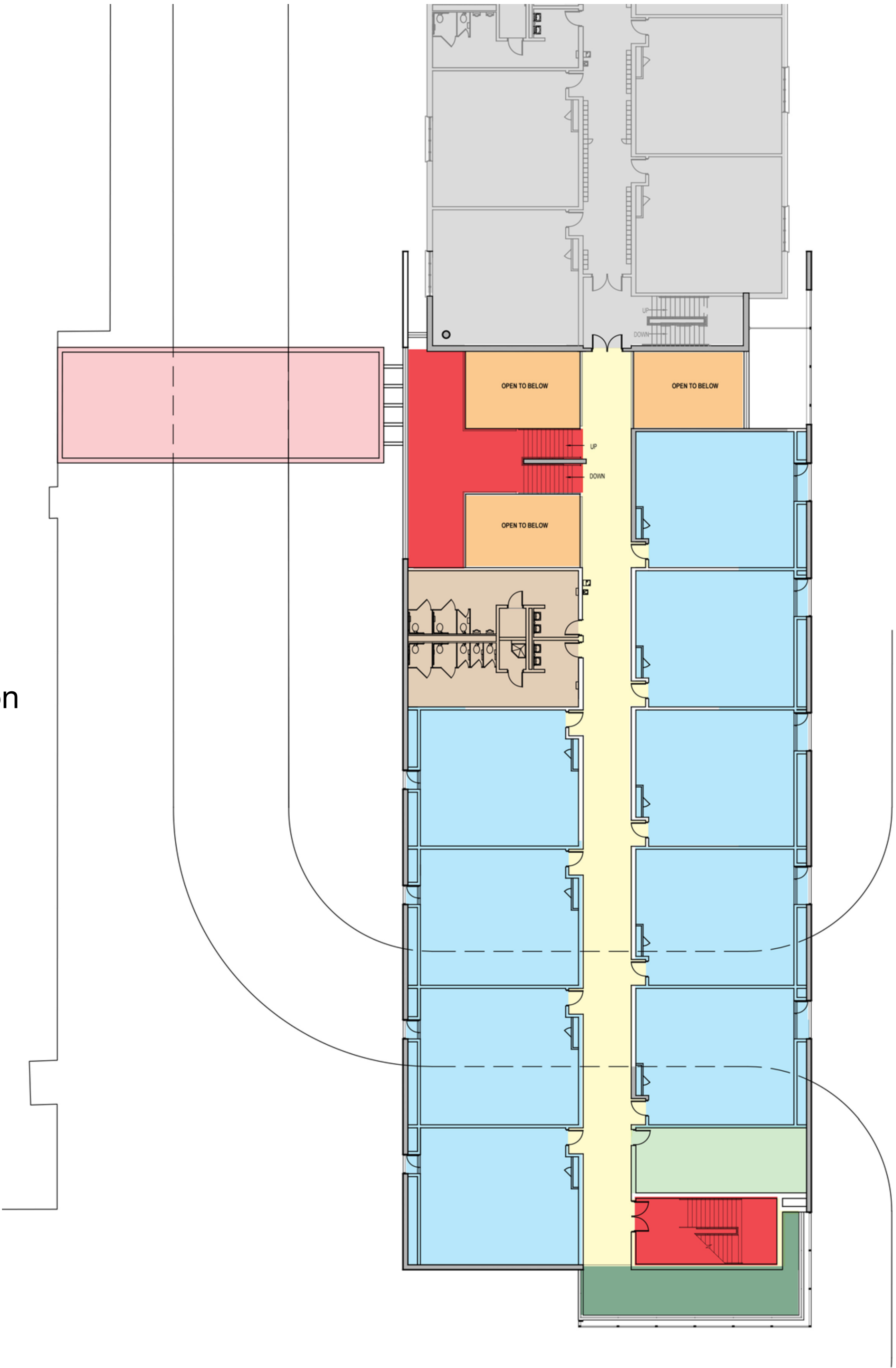
FIRST FLOOR

LEGEND

- Classrooms
- Lobby
- Social Area
- Toilets
- Storage
- Connector
- Horizontal Circulation
- Vertical Circulation
- Open to Below
- Existing

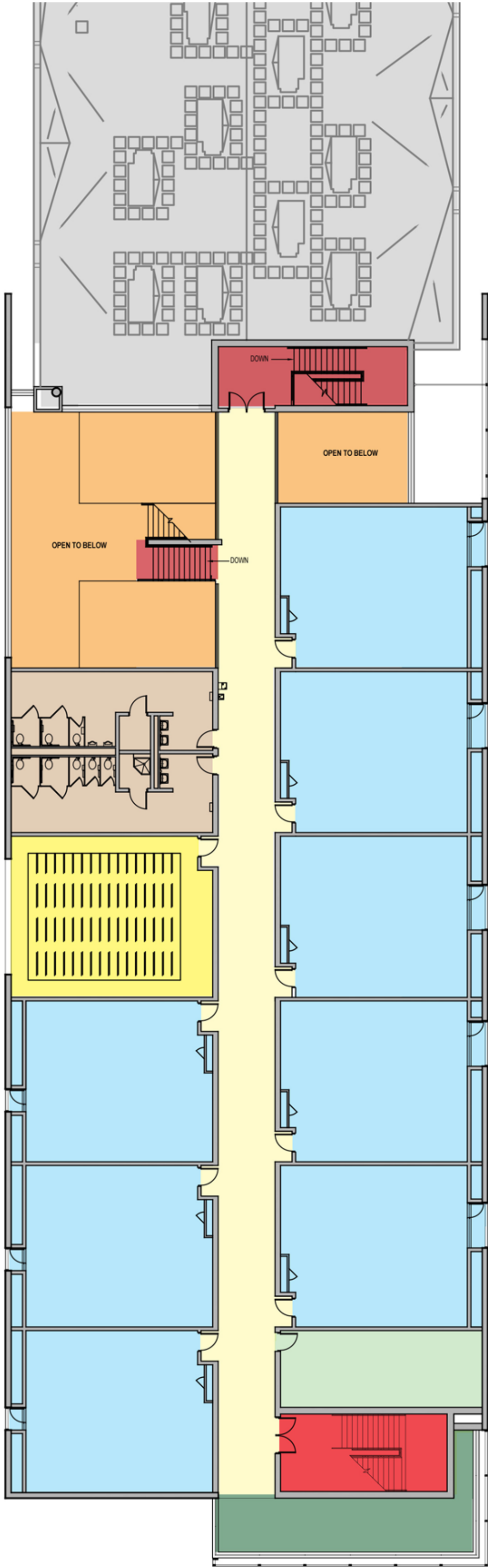


SCALE: 1/16" = 1' - 0"



SECOND FLOOR

Classroom Addition | Floor Plan



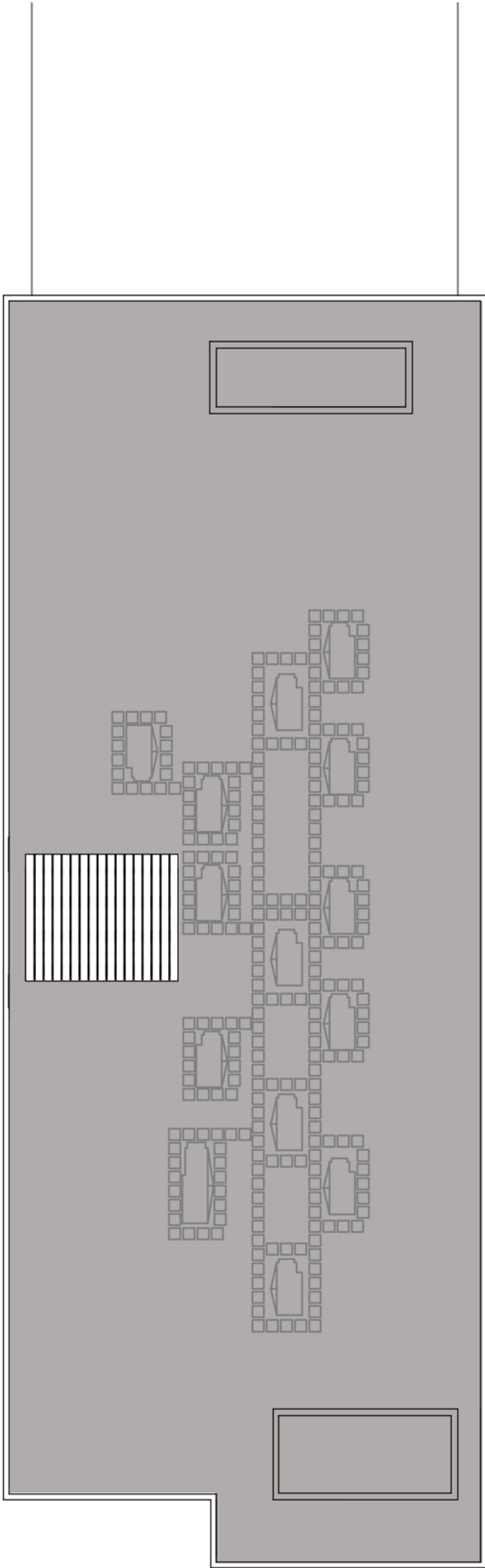
THIRD FLOOR

LEGEND

- Classrooms
- Social Area
- Toilets
- Storage
- Horizontal Circulation
- Vertical Circulation
- Open to Below
- Existing
- Mechanical
- Outdoor Classroom



SCALE: 1/16" = 1' - 0"



ROOF PLAN

Classroom Addition | Section



SOUTH - NORTH



WEST - EAST

SCALE: 1/16" = 1" - 0"

0 8' 16' 32'



LOBBY SECTIONS



Classroom Addition | Exterior Perspective



SOUTHWEST VIEW



NORTHWEST VIEW



SOUTHEAST VIEW



MAIN ENTRY - NORTH VIEW

Classroom Addition | Interior Perspective



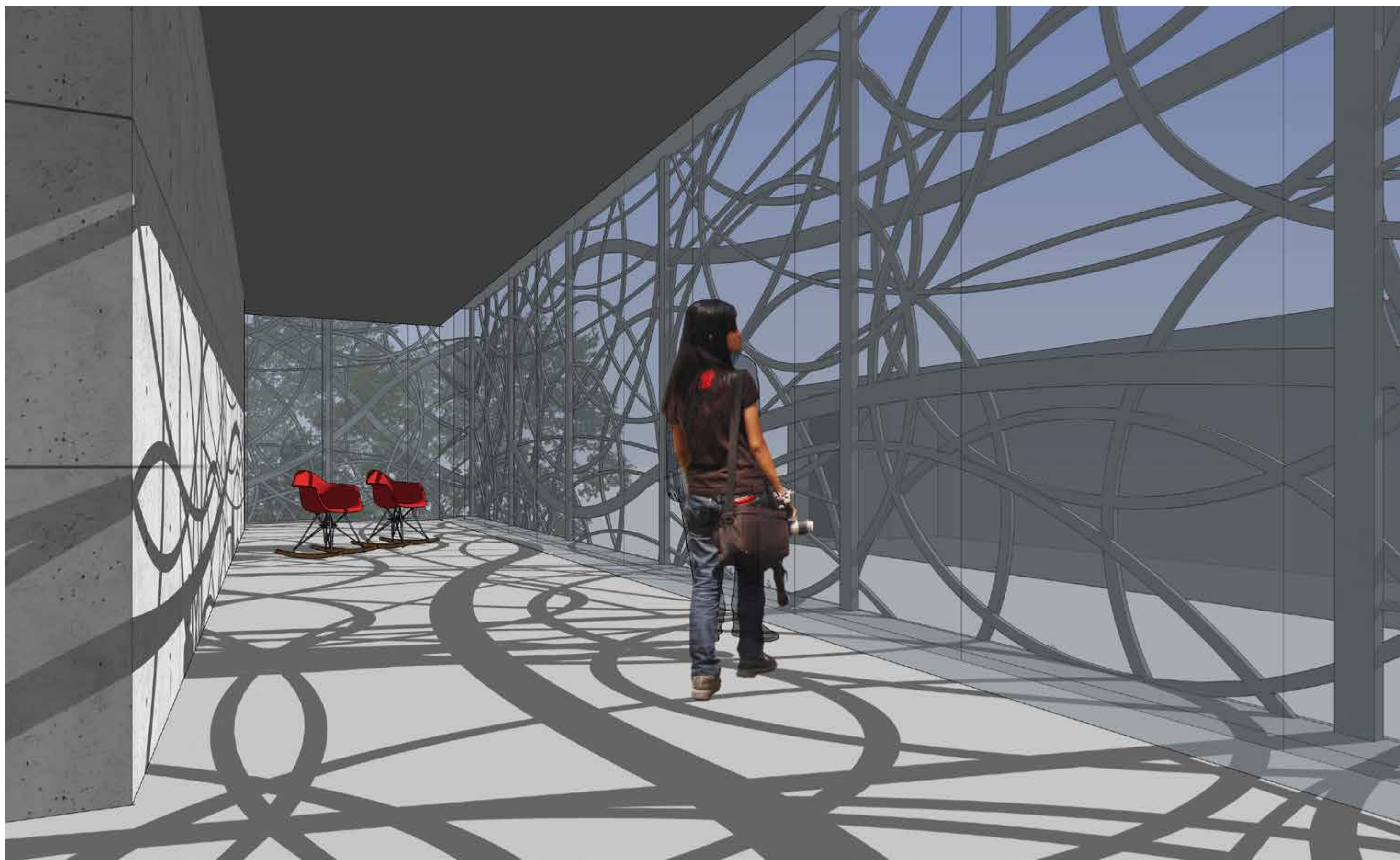
WALKWAY



LOBBY



SOCIAL AREA - LOBBY



SCREEN FRONT VARANDA

Classroom Addition | Elevation and Birds Eye View



BIRDS EYE VIEW - NORTH



BIRDS EYE VIEW - SOUTH



SOUTH ELEVATION

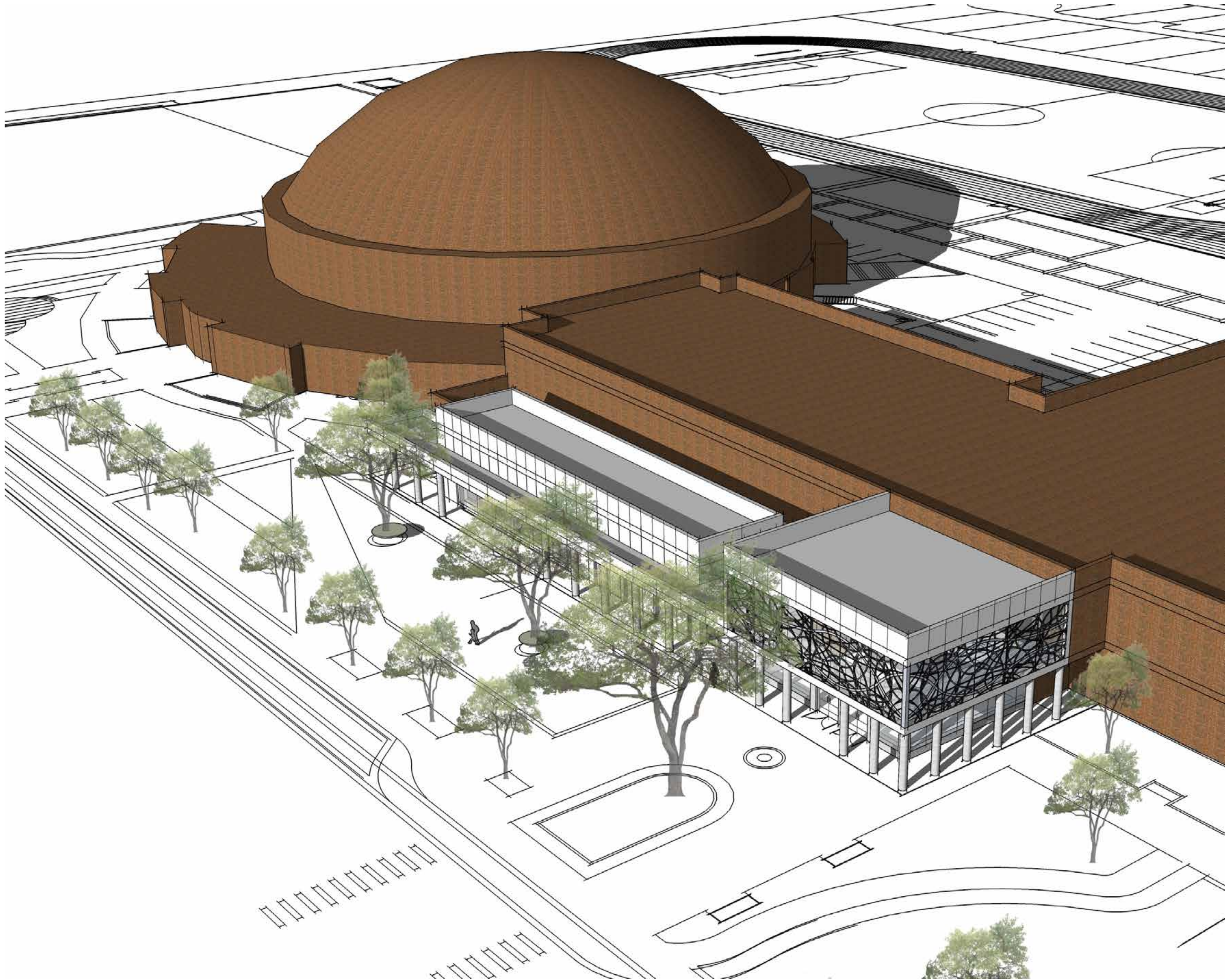


WEST ELEVATION

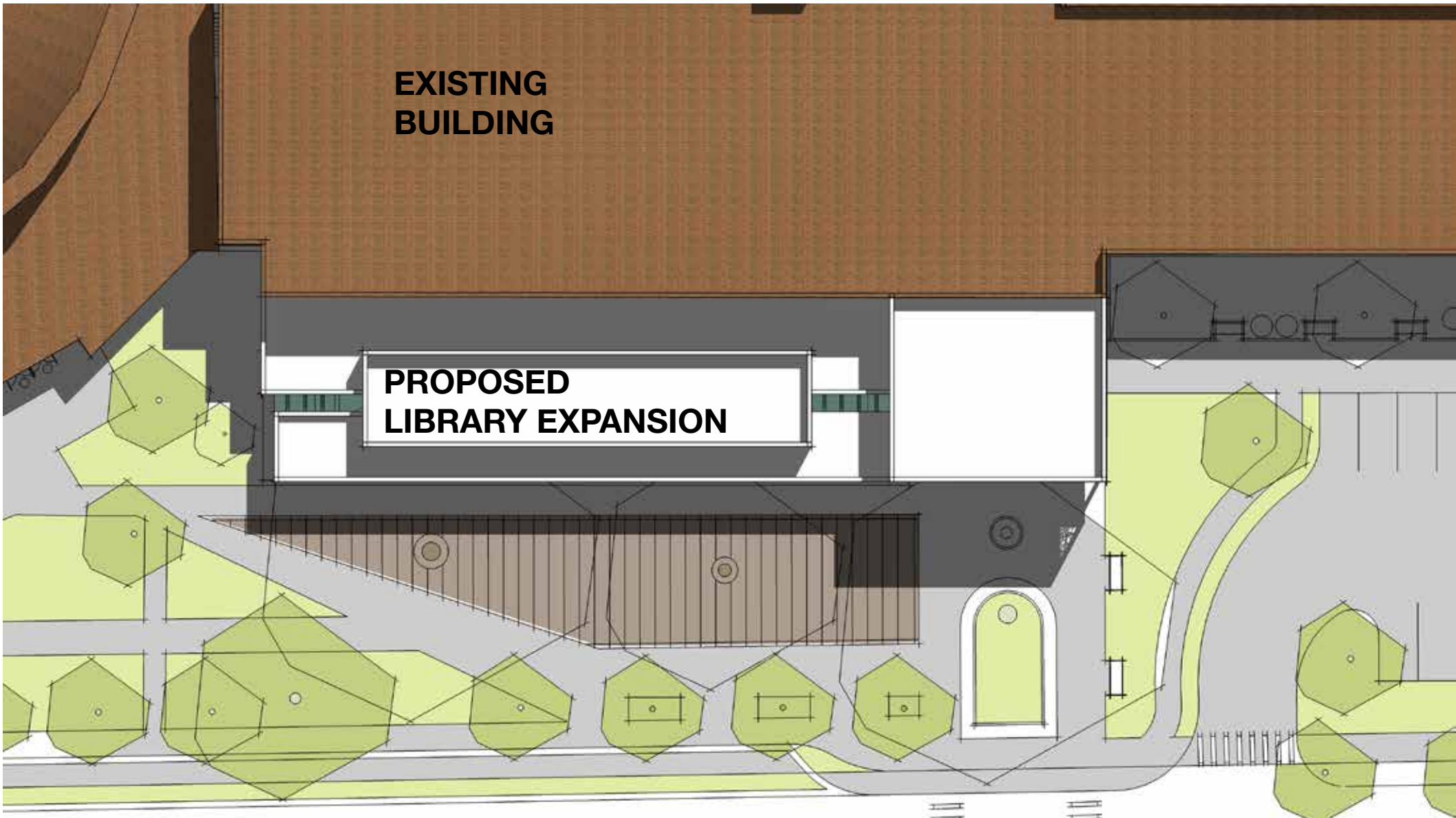


NORTH ELEVATION

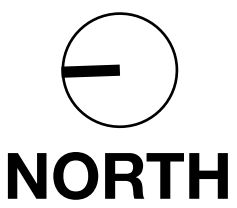
Library Expansion | Site Plan



BIRDS EYE VIEW



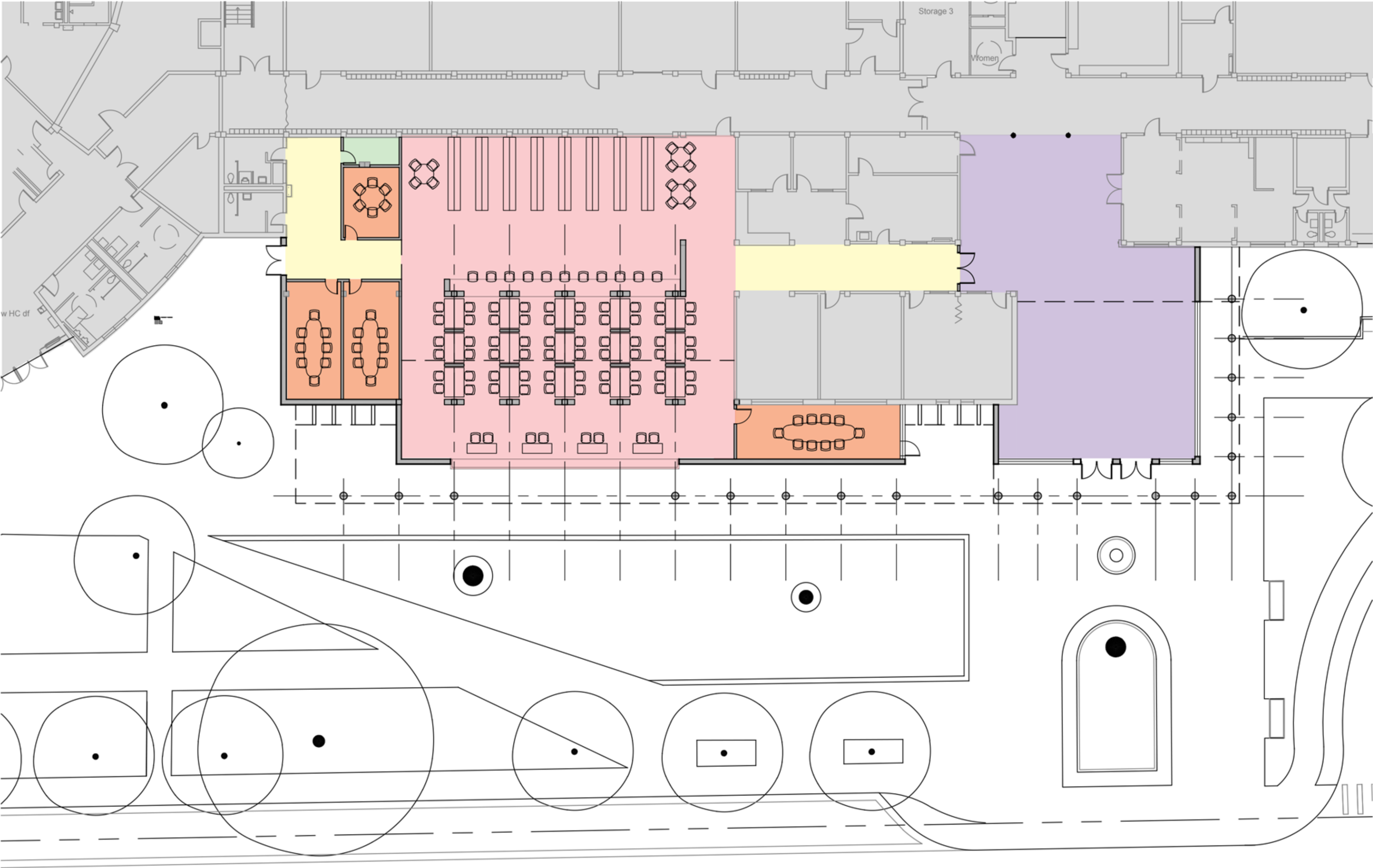
SITE PLAN



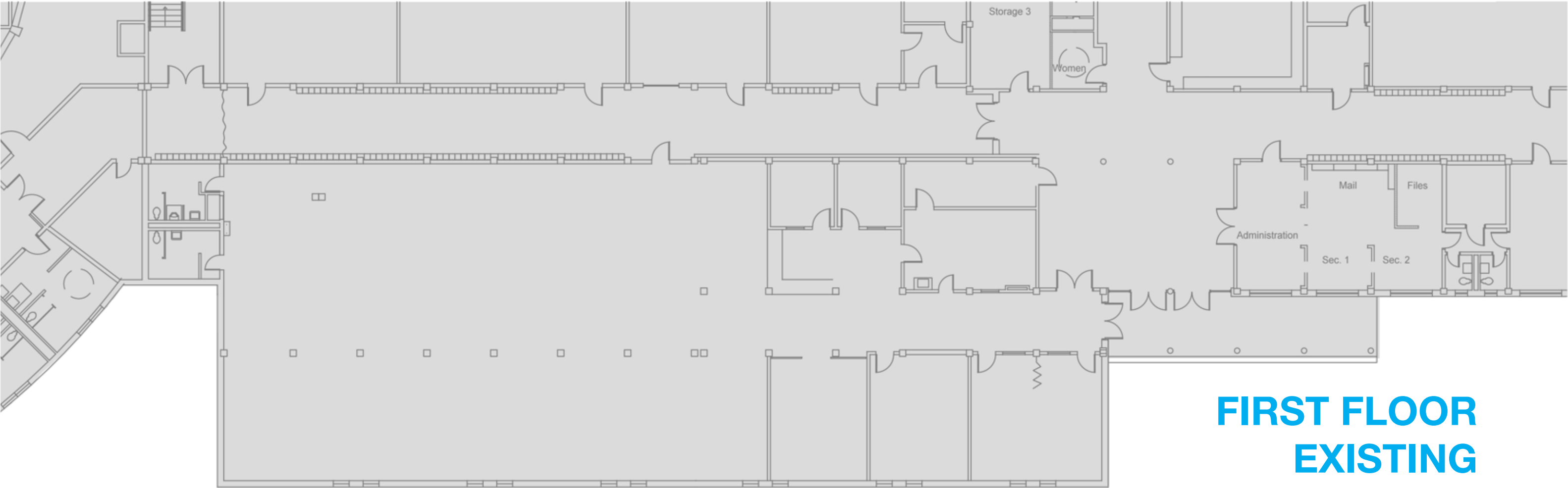
SCALE: 1" = 30'

A scale bar with markings for 0, 15, 30, and 60 feet.

Library Expansion | Floor Plan











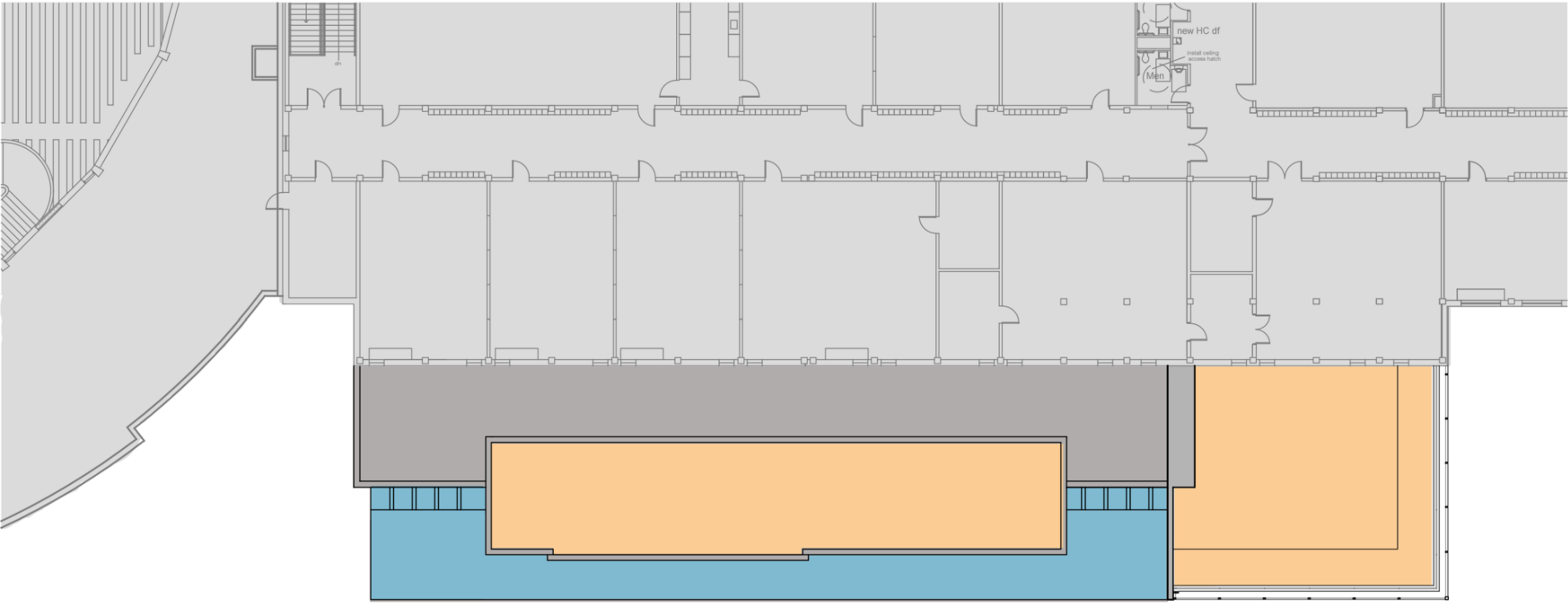
FIRST FLOOR



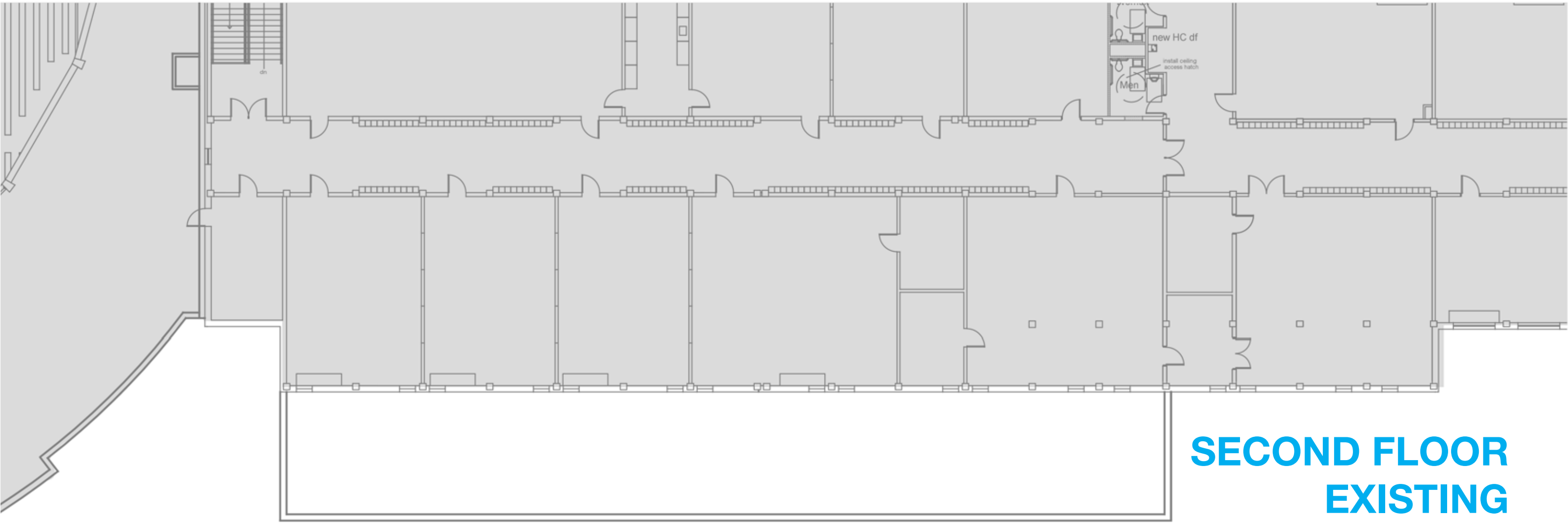
FIRST FLOOR
EXISTING

LEGEND

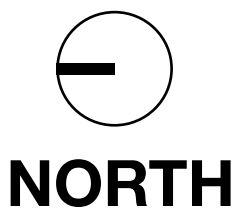
- | | | | |
|---|------------------------|---|---------------|
|  | Library |  | Double Height |
|  | Conference Room |  | Existing |
|  | Lobby |  | New Roof |
|  | Storage |  | Canopy |
|  | Horizontal Circulation | | |



SECOND FLOOR



SECOND FLOOR
EXISTING



SCALE: 1/16" = 1' - 0"



Library Expansion | Section



LOBBY SECTION

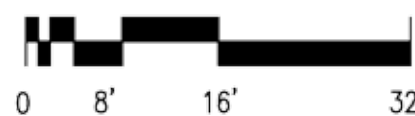


LIBRARY SECTION



NORTH-SOUTH SECTION

SCALE: 1/16" = 1" - 0"



LOBBY PERSPECTIVE SECTION



LIBRARY PERSPECTIVE SECTION



NORTH-SOUTH PERSPECTIVE SECTION

Library Expansion | Exterior Perspective - Elevation



NORTHWEST PERSPECTIVE



SOUTHWEST PERSPECTIVE



NEW ENTRANCE



SOUTH ELEVATION

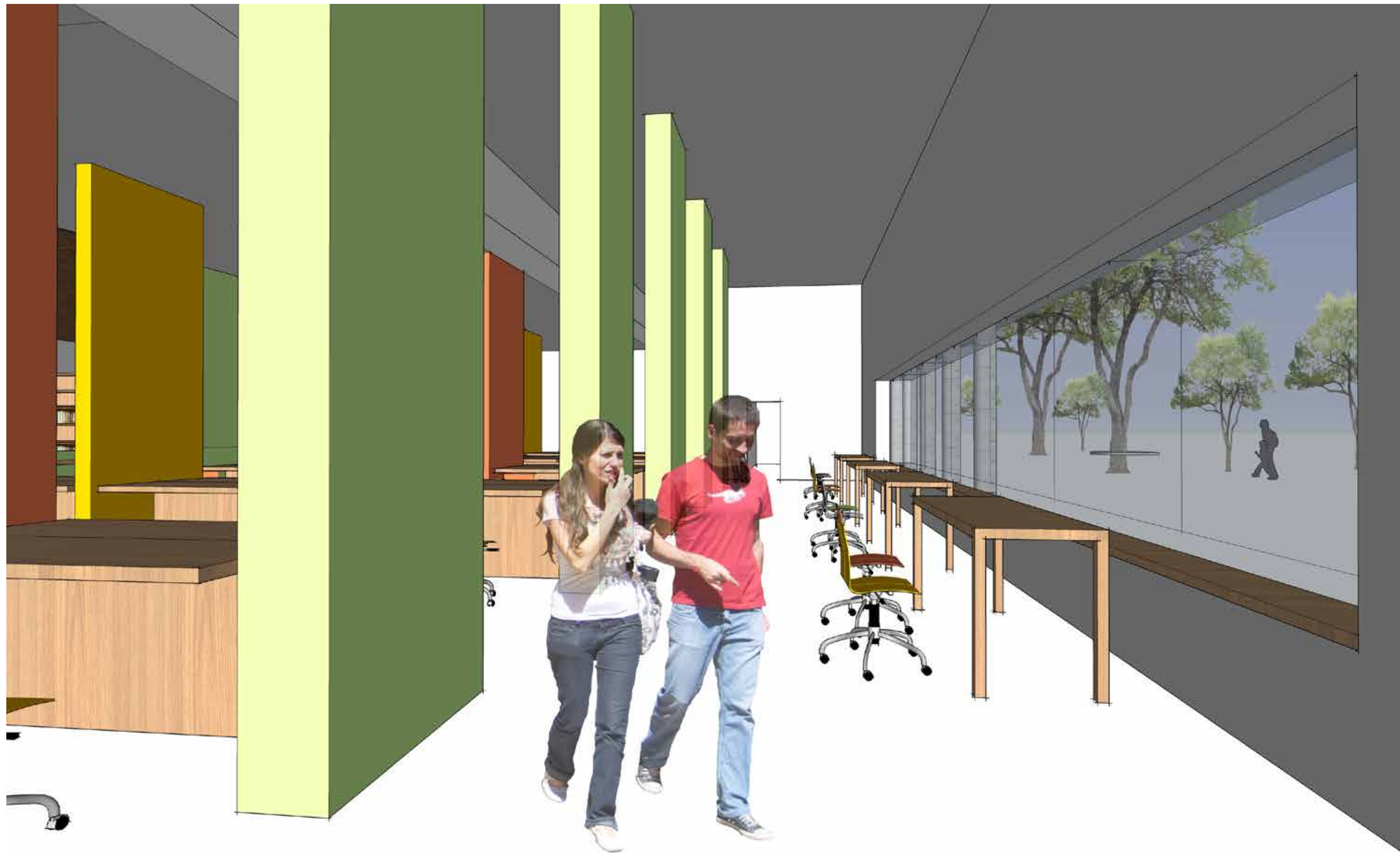


WEST ELEVATION

Library Expansion | Interior Perspective



LIBRARY



LIBRARY



LOBBY