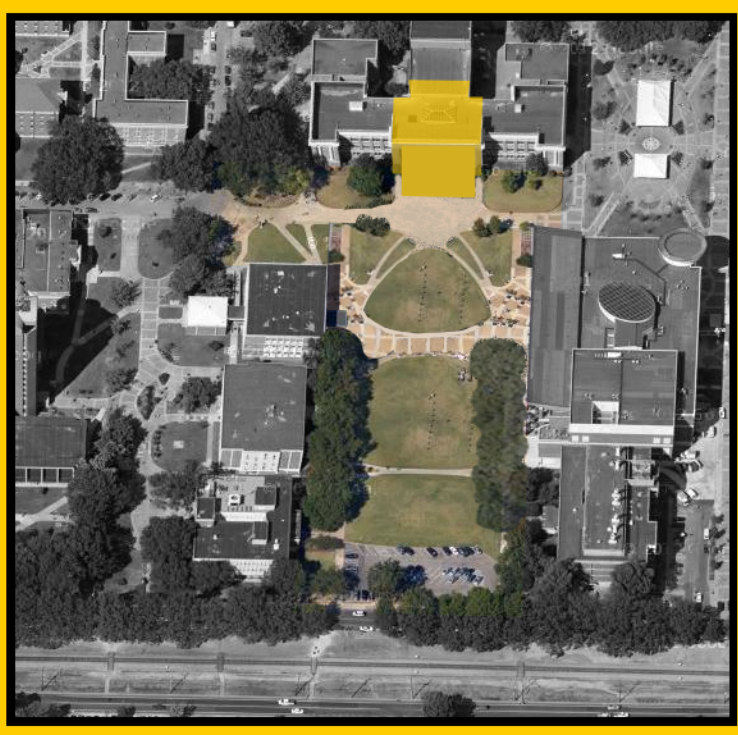


# The University of Memphis ADMINISTRATION BUILDING

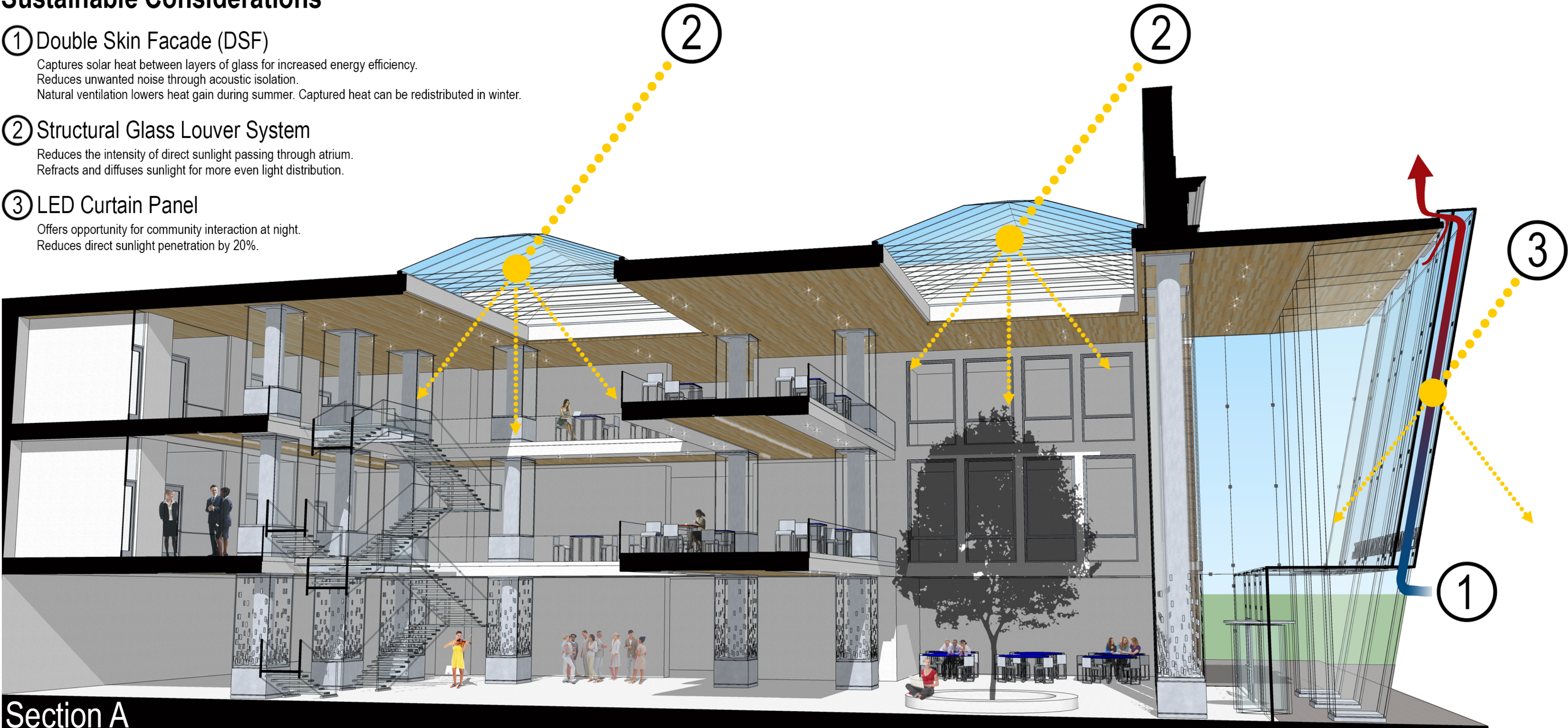
A Vision for a 21st Century Campus  
Spring 2013

The concept driving the design of the new administration building entrance was to create strong **interactions** between building activities and those of the lawn. The result is a façade of pure **transparency**, driven by cutting edge structural glass technology. The design promotes a seamless transition from the outside in and from the inside out. At night, the façade transforms into a giant **community** screen that can be used to view off-campus Tigers games or to play movies that students can enjoy on the lawn or from the new UC. The new interior provides strong **connections** between students and staff while offering places for study, community interaction, performances or social functions.



## Sustainable Considerations

- ① Double Skin Facade (DSF)  
Captures solar heat between layers of glass for increased energy efficiency.  
Reduces unwanted noise through acoustic isolation.  
Natural ventilation lowers heat gain during summer. Captured heat can be redistributed in winter.
- ② Structural Glass Louver System  
Reduces the intensity of direct sunlight passing through atrium.  
Refracts and diffuses sunlight for more even light distribution.
- ③ LED Curtain Panel  
Offers opportunity for community interaction at night.  
Reduces direct sunlight penetration by 20%.



## Section A

NTS

## FLOOR PLAN KEY

- 1 ENTRY
- 2 TREE
- 3 MEDIA + STUDY SPACE
- 4 RESTROOM
- 5 PERFORMANCE SPACE
- 6 ATRIUM
- 7 CATWALK
- 8 STUDY TABLES
- 9 OFFICE
- 10 OFFICE BALCONY

