

The Rec Room Addition

The addition is a Multi use outdoor area that provides Space for lounging, eating, and entertainment

The design will incorporate a projector and screen, seating, a bar, entertainment spaces, and green spaces

The addition will incorporate the existing space as much as possible and will alter it as little as possible in the nature of being sustainable.

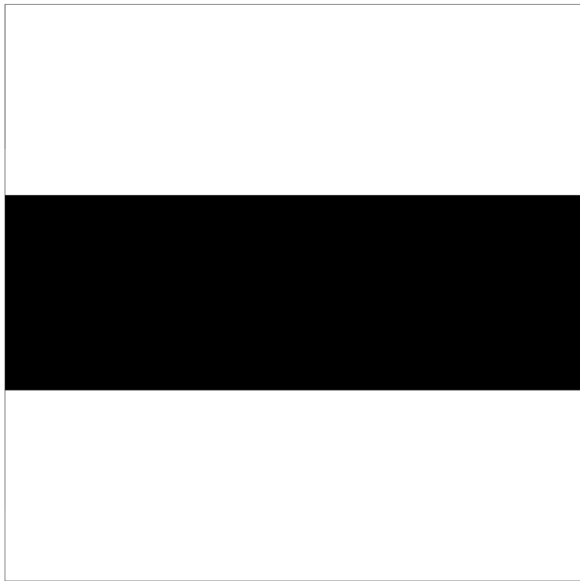
In my initial observations about the space I feel the space is isolated and blocked by trees to the main streets that the site sits off of, however there are paths that occur which direct people in the direction of the site to a specific point.

In response to my observations, my design will reverse the feel of isolation by creating a space that is open and flows from area to area; furthermore my design will build on the natural flow of its users creating a very comfortable point of entry and progression through the space.

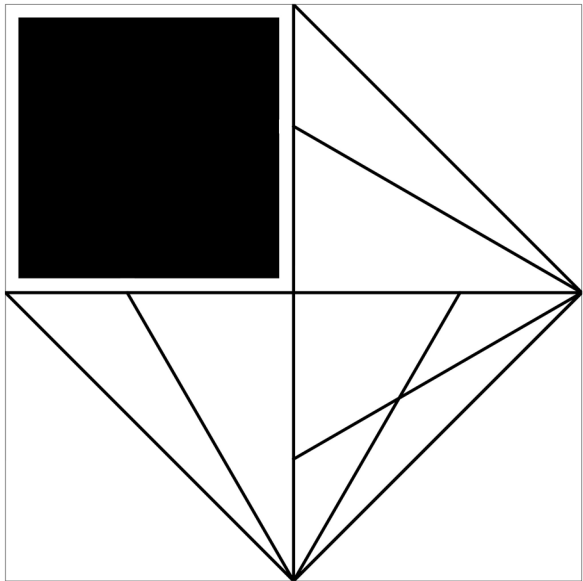


Site Plan 1"= 30'

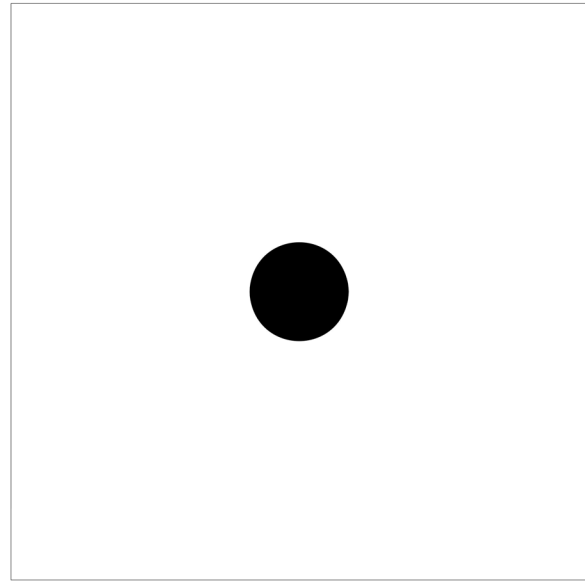
Observations and Concept Diagrams



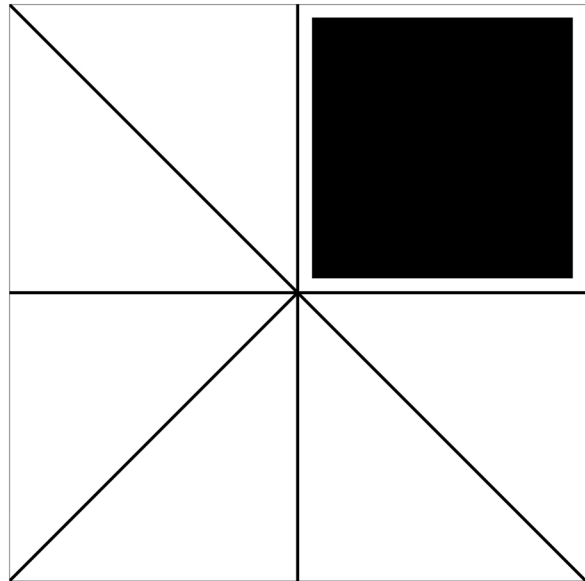
Permanence



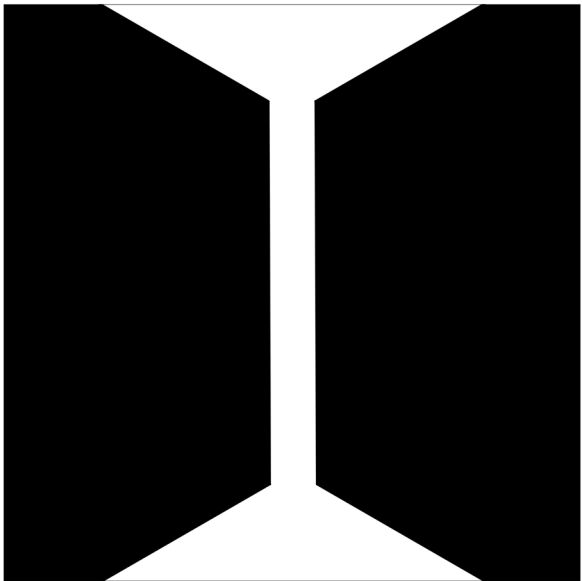
Projection



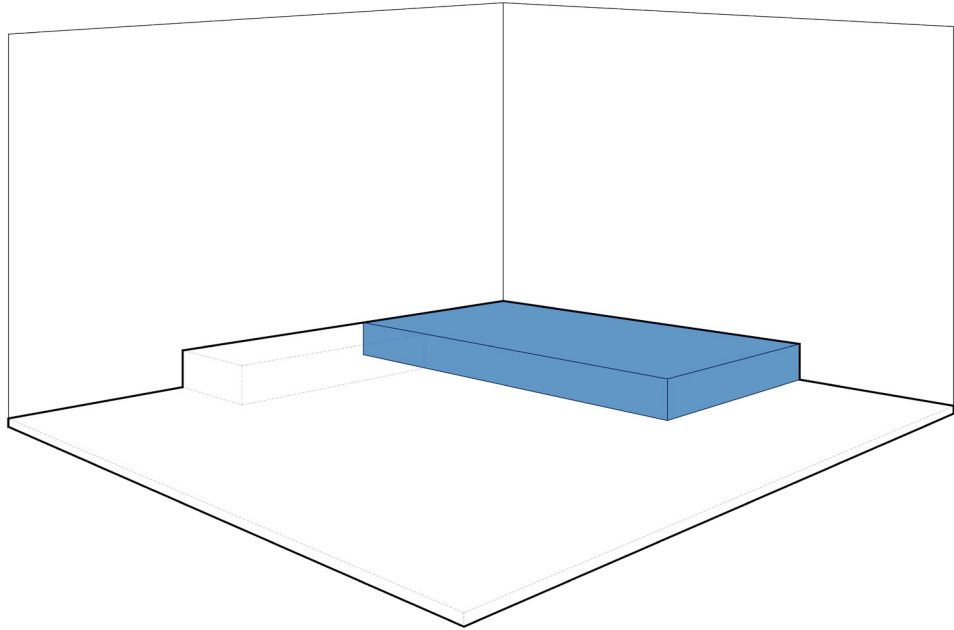
Isolation



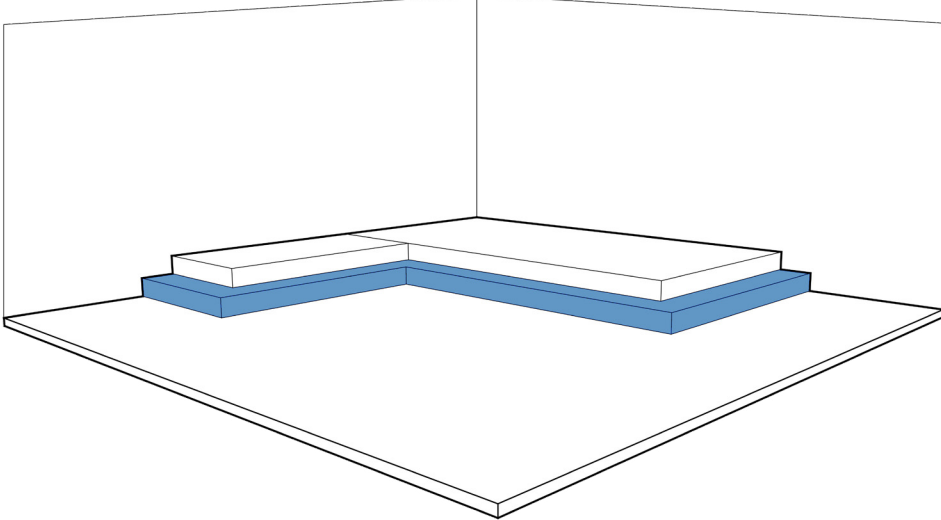
Flow



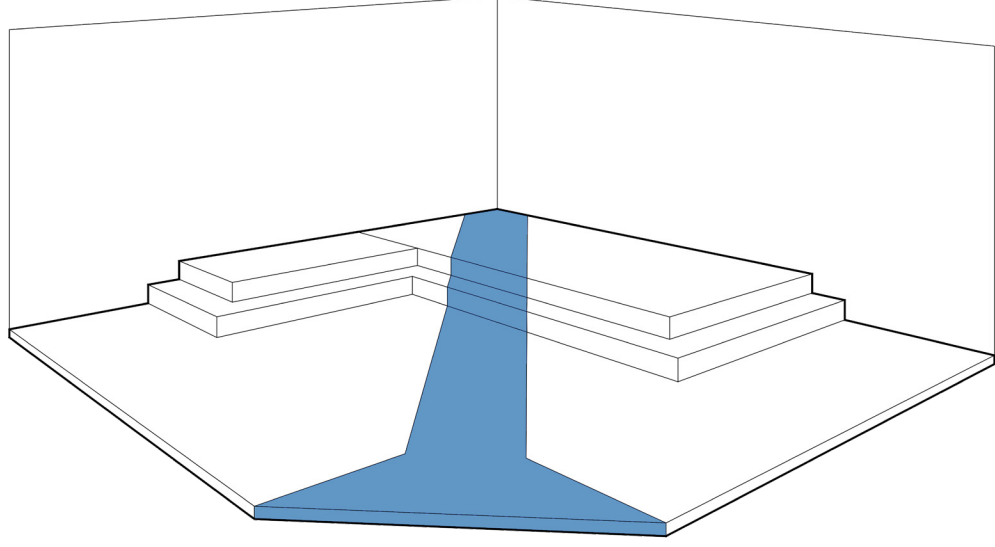
Obstruction



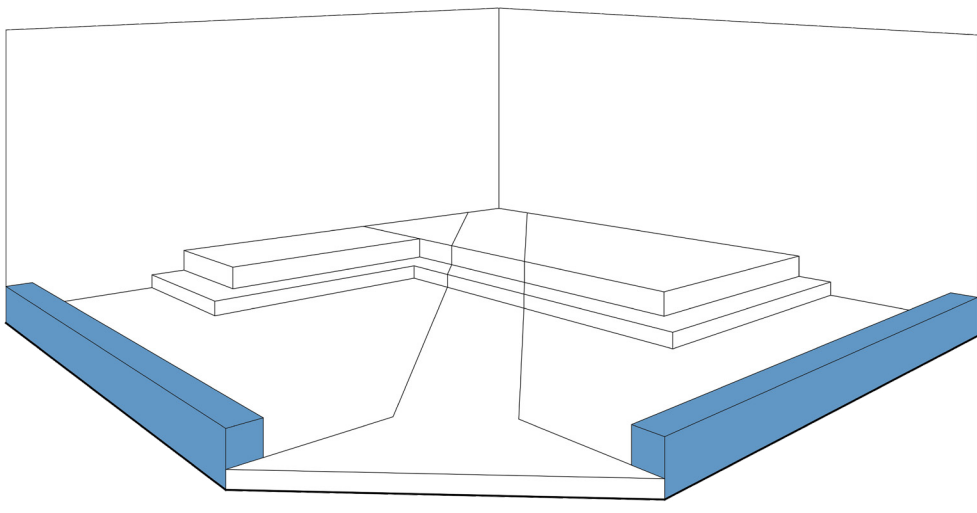
Existing Deck



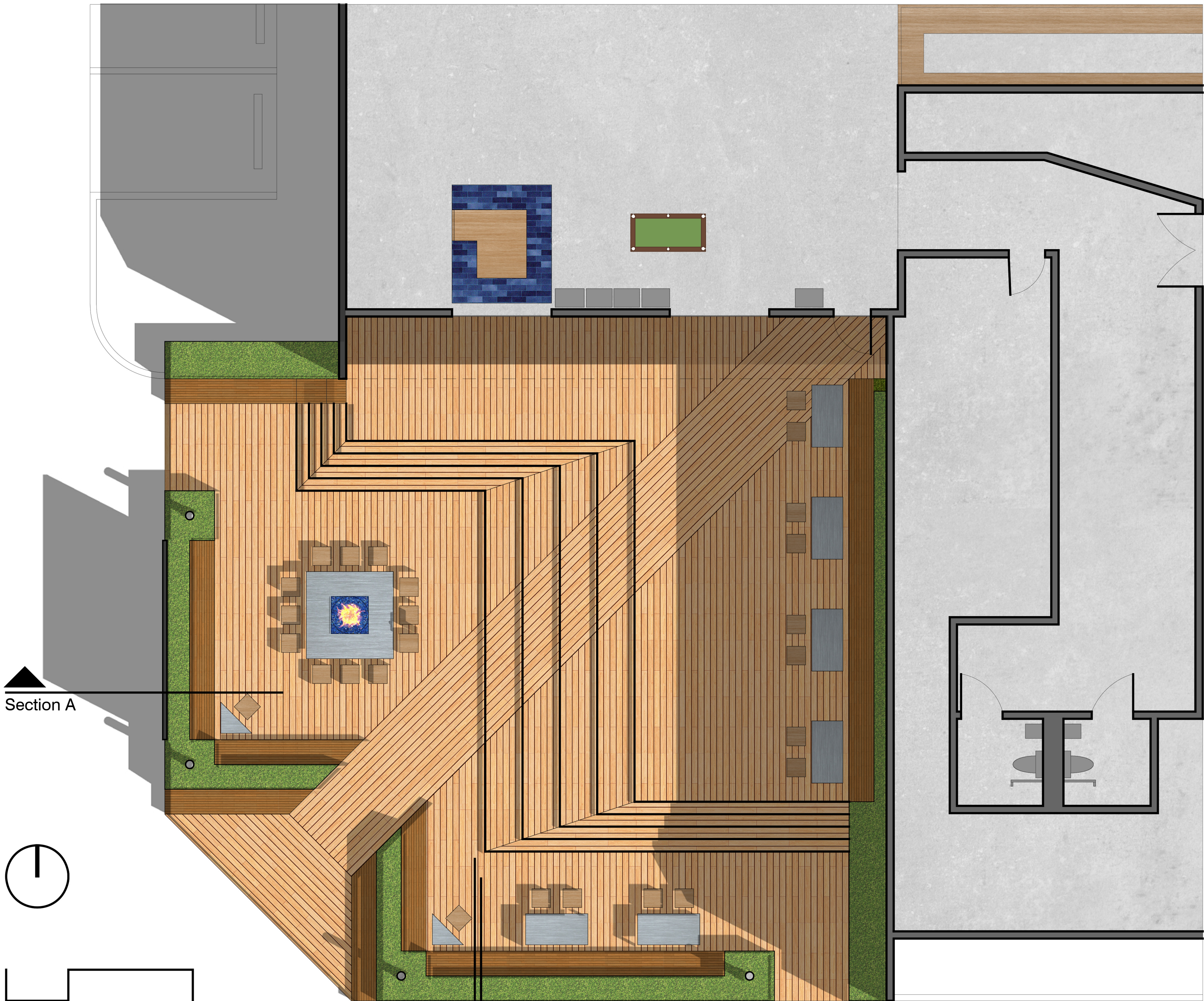
Seamless Transition



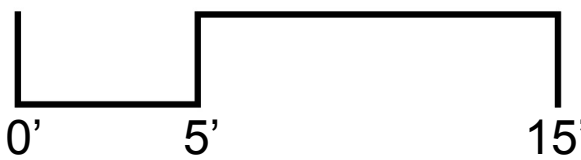
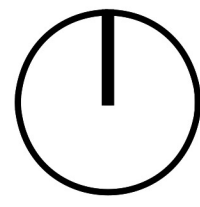
Linear Emphasis



Defining Elements



Section A



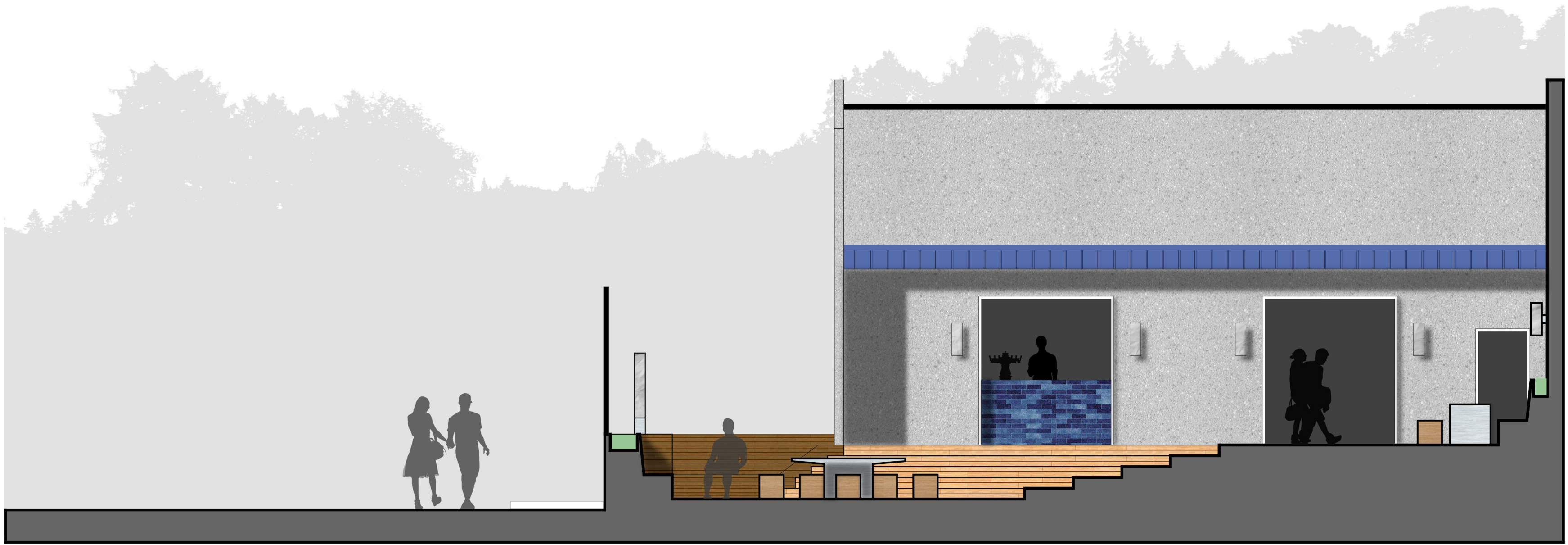
Floor Plan 3/16"=1'

Section B



Section C

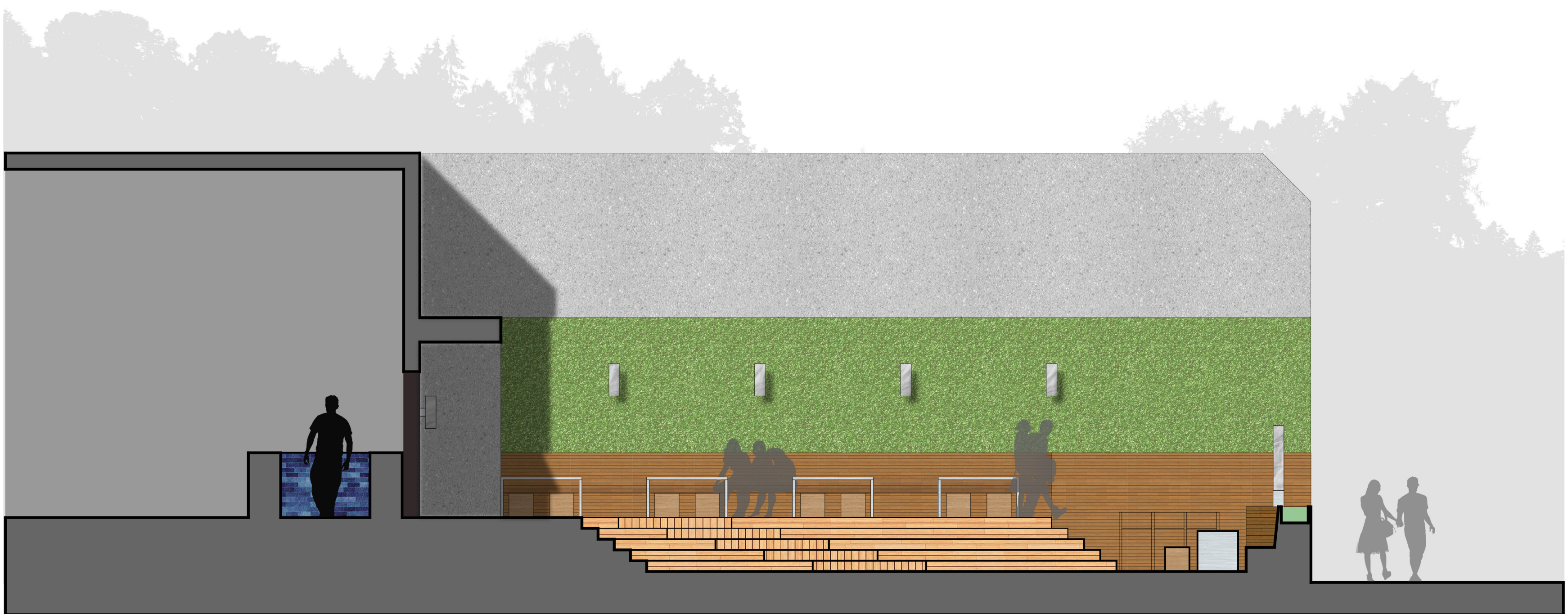




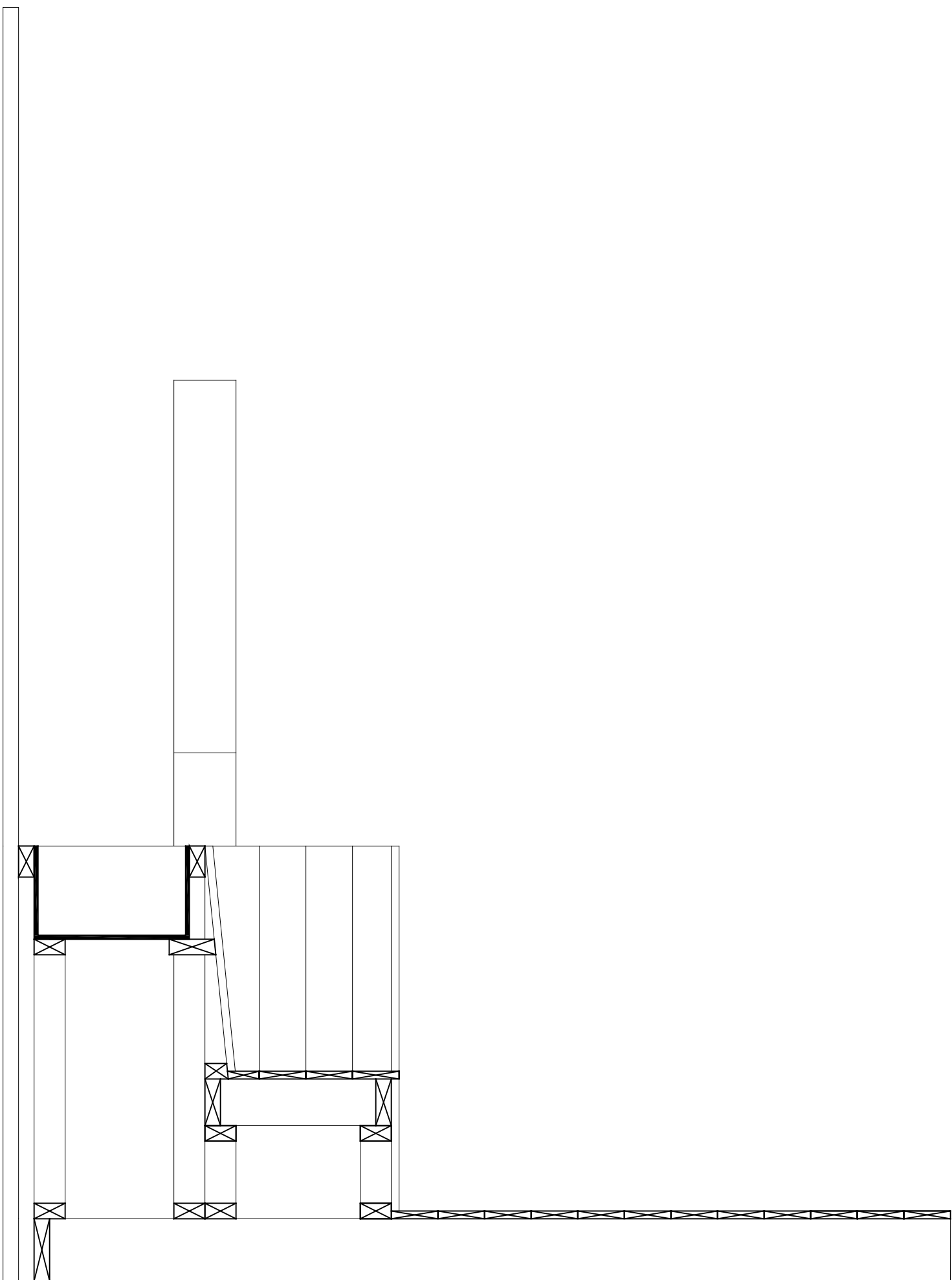
Section A



Section B



Section C



Component Drawing 3/4" = 1' Section Detail through seating element and planter