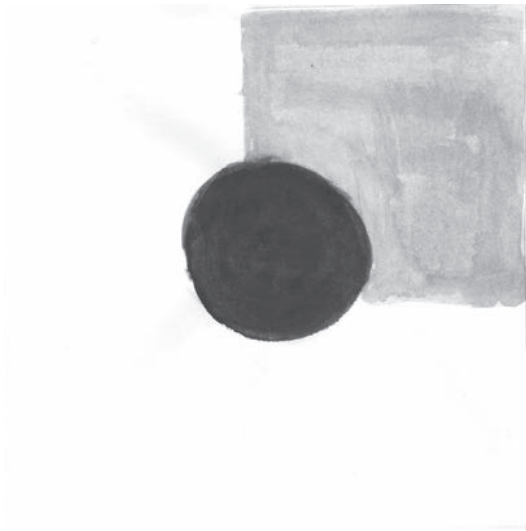


Rec Room: Outdoor Space

3000 Broad Ave. Memphis, TN

The current state of the outdoor space at the Rec Room lacks a sense of entry. Parking is separated from the primary entrance; and there is no clear path into the building. The concept of this design was to create a hierarchy of thresholds that define the entrance of different spaces within the site. This design creates thresholds into the game space, into the bar area, and into the building.



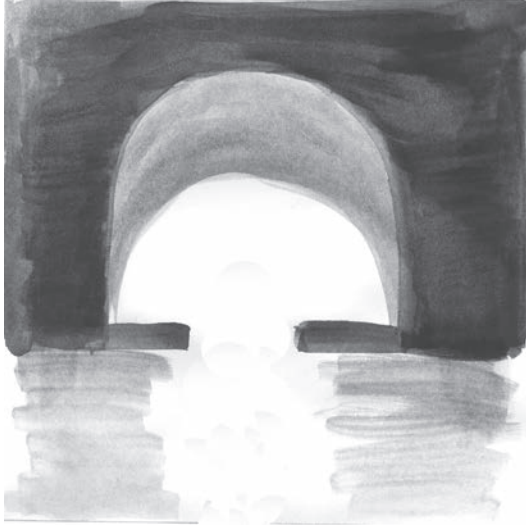
Access to site from two perpendicular streets



Contrast between industrial and green-scape



Inadequate signage

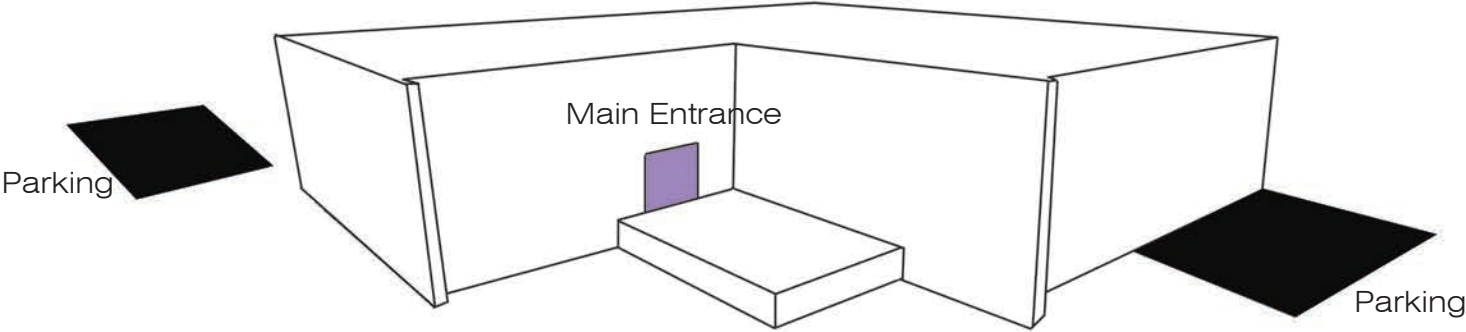


Lack of defined entry

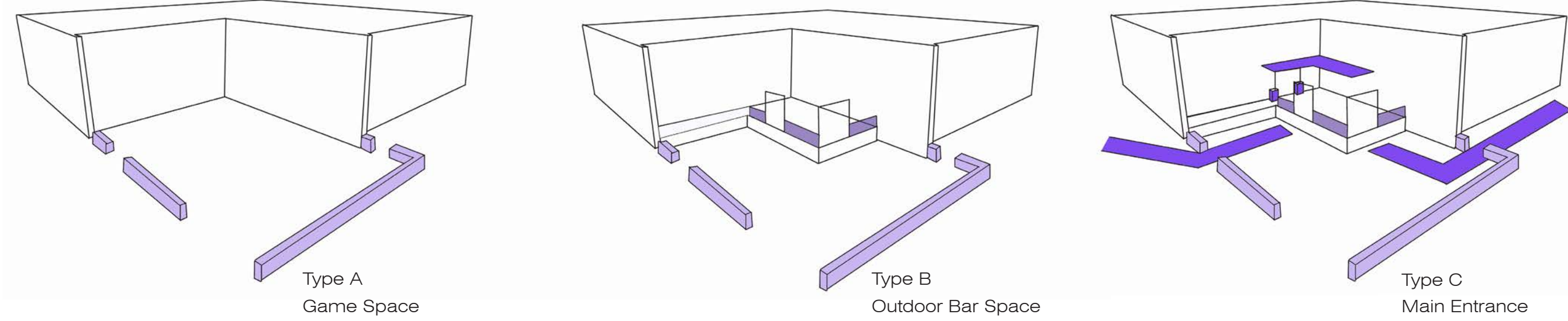


Multiple space usages

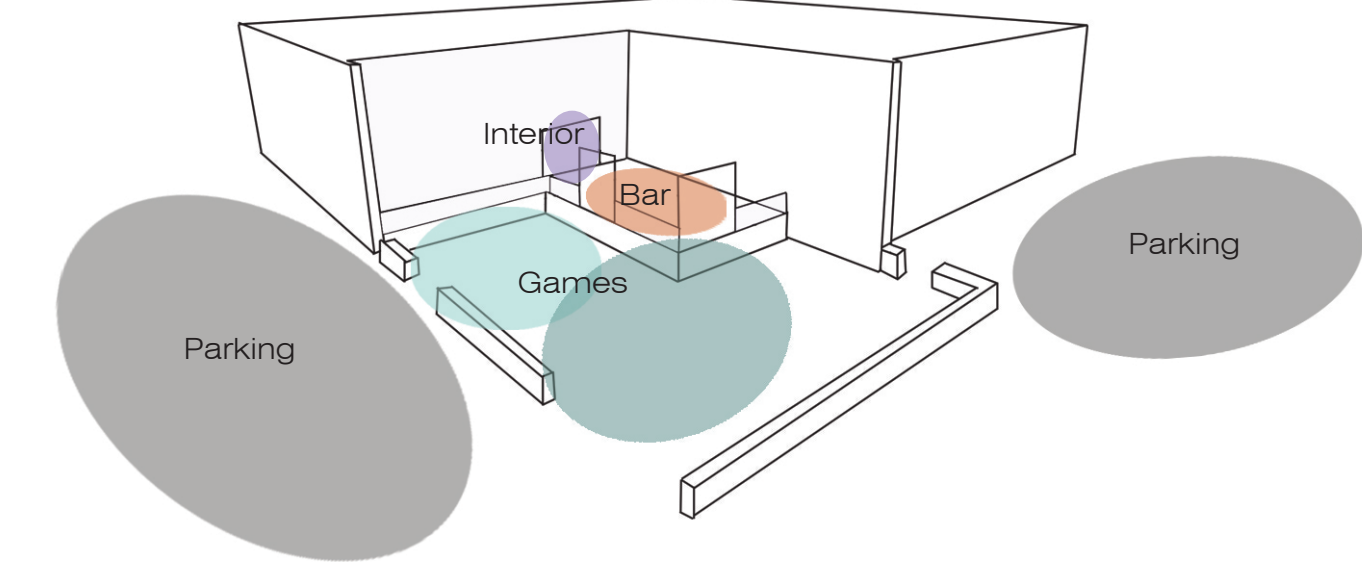
Abstracted Observations



Observation Diagram



Concept Diagram



Response Diagram



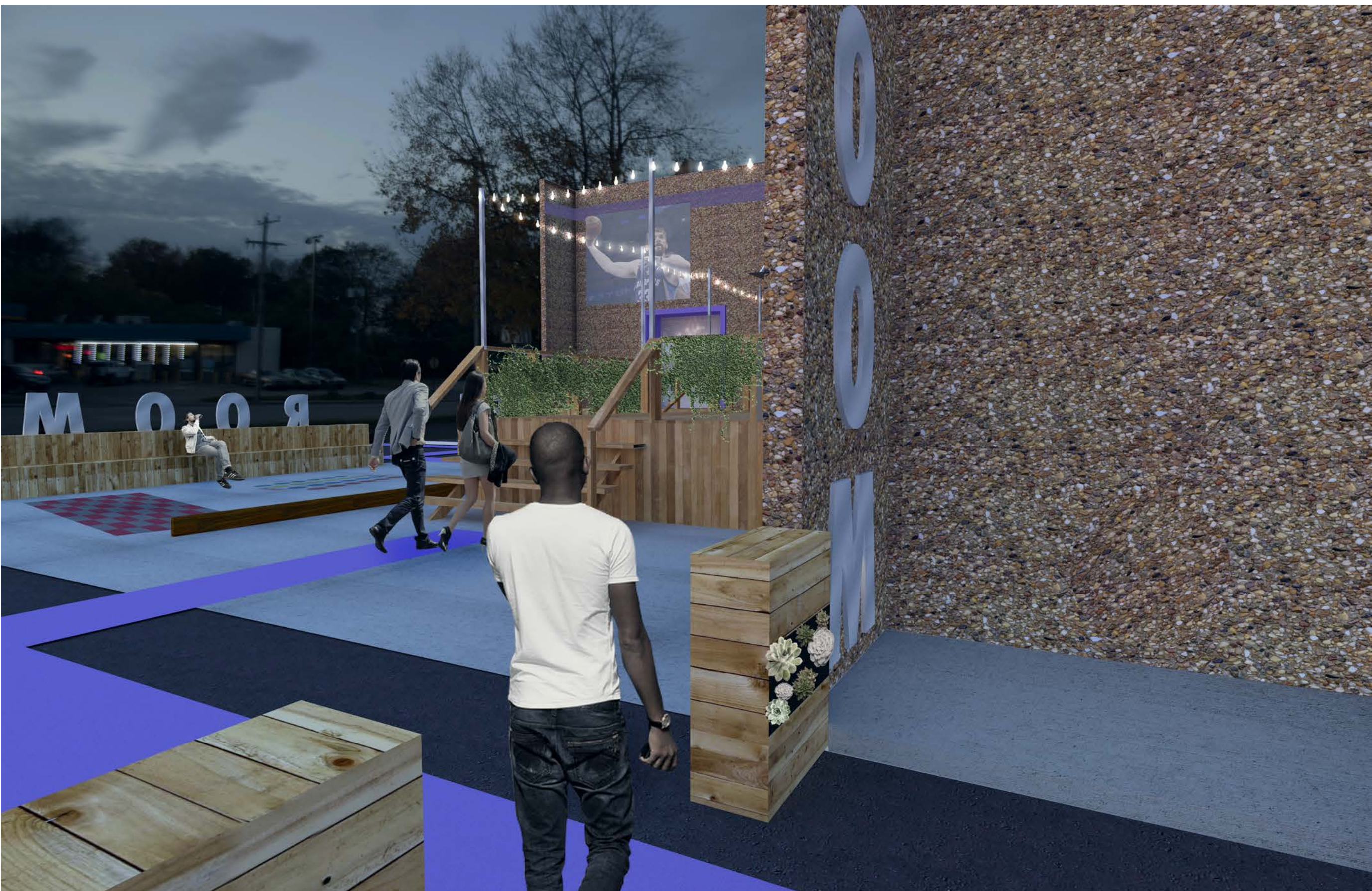
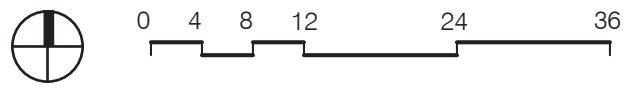
Section A
3/16"=1'-0"



Site Plan
1"=30'-0"



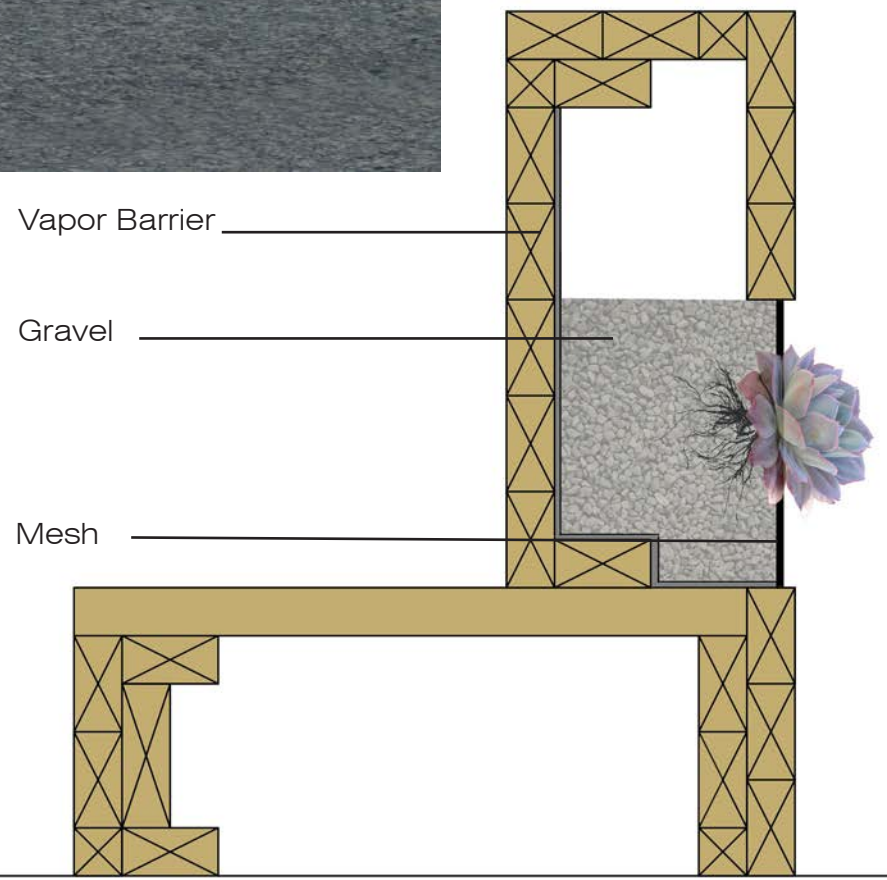
Floor Plan
3/16"=1'-0"



Type A threshold - Low wall with painted asphalt and concrete path



Type A Threshold - Low wall with painted asphalt and concrete path



Detail- Wall with seating and vertical garden
1 1/2"=1'-0"



Type B threshold - to outdoor bar area



Section C
3/16"=1'-0"

0 4 8 12 24 36



Section B
3/16"=1'-0"

0 4 8 12 24 36



Outdoor bar area and upper deck