



MORE GOALS DOES NOT EQUAL BETTER THERAPY

- Higher the need, fewer the goals
 - Supports the need for necessary time and repetition
- You won't fix everything in one year, don't try to.

PLAAFP

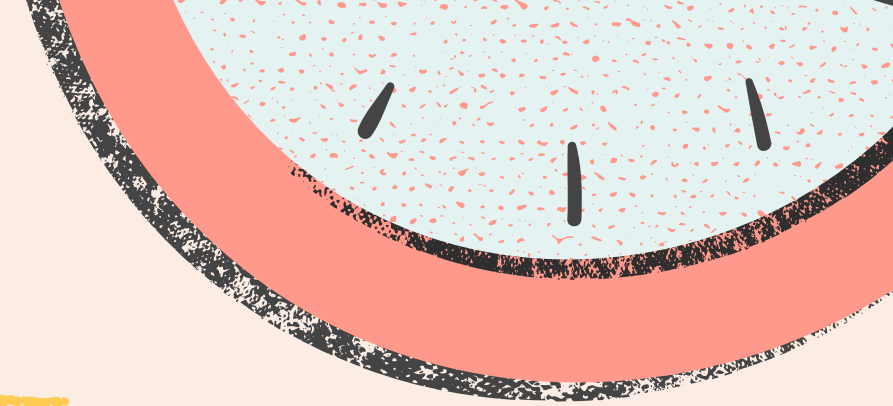


-The student achieved a scaled score of 3 on the Word Classes subtest of the CELF-5 assessment. This subtest evaluates a student's ability to understand relationships between words based on semantic class features, function, or place or time of occurrence. A scaled score of 3 is determined to be below average when compared the average range of 7-13. Deficits in this area maybe observed by difficulty expressing meanings in written text, emphasized by comparing and contrasting related words for shared and non-shared meaning features, classifying words by semantic classes to form concept categories, and semantic networks, and using antonyms and synonyms. When categorizing skills were further probed, Student achieved a score of 30% when asked to state the group for three related objects.

OBJECTIVE



- By July 2022, student will improve the ability to categorize items from 30% to 50% accuracy by stating the correct category when provided a verbal list of three related objects with no more than one verbal cue over three consecutively targeted sessions.



Remember....

- **DEFINE**
- **BASELINE**
- **REFINE**
- **REVIEW**

