



THE UNIVERSITY OF  
**MEMPHIS**™

The Center for Research in  
Educational Policy (CREP)

# Partnering with CREP

***Todd Zoblotsky***  
*CREP Research Director*

***Cindy Muzzi***  
*CREP Assistant Director*

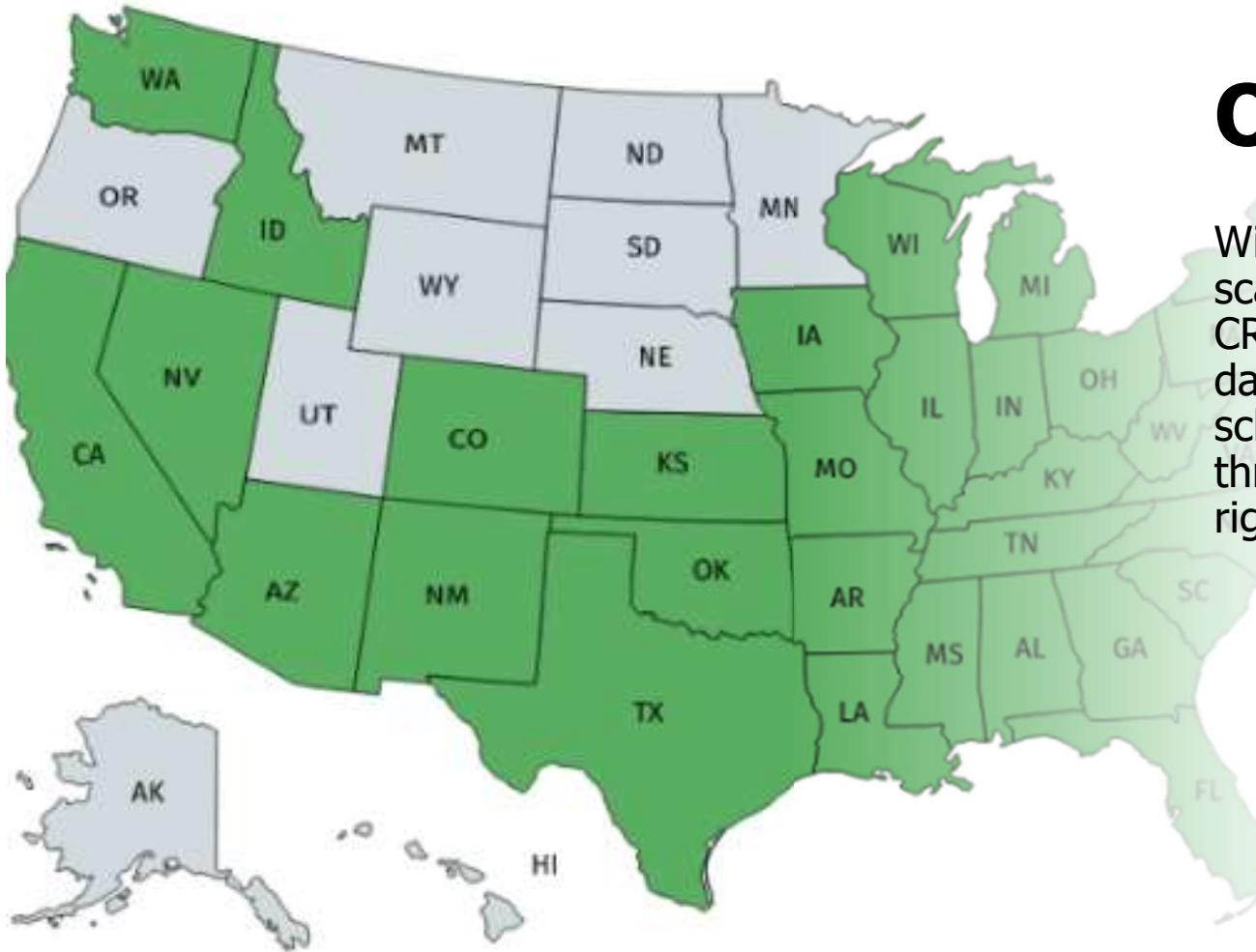
***Carolyn Kaldon***  
*CREP Research Associate Professor*

# Meet our Team





The **Center for Research in Educational Policy** was designated a Center of Excellence by the Tennessee Higher Education Commission in 1989.



# Our Reach

With experience conducting large-scale evaluations in **37 states**, CREP strives to provide up-to-date, relevant data useful to both schools and policy makers through high-quality research and rigorous program evaluation.

# CREP Focus Areas



**STEM**



**Urban Ed Reform**



**School Climate**



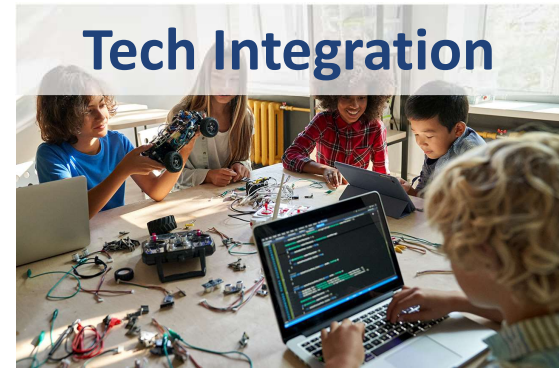
**Literacy**



**Teacher Prep**



**Tech Integration**



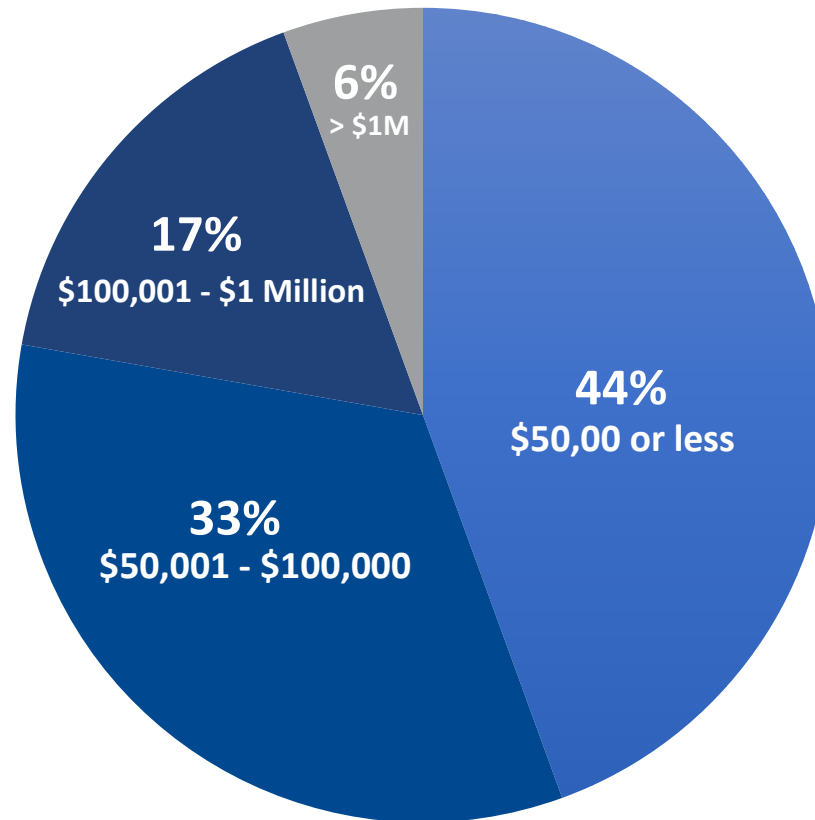


We are grant and contract funded

---

Current budgets range from \$800 → \$1,375,000

---



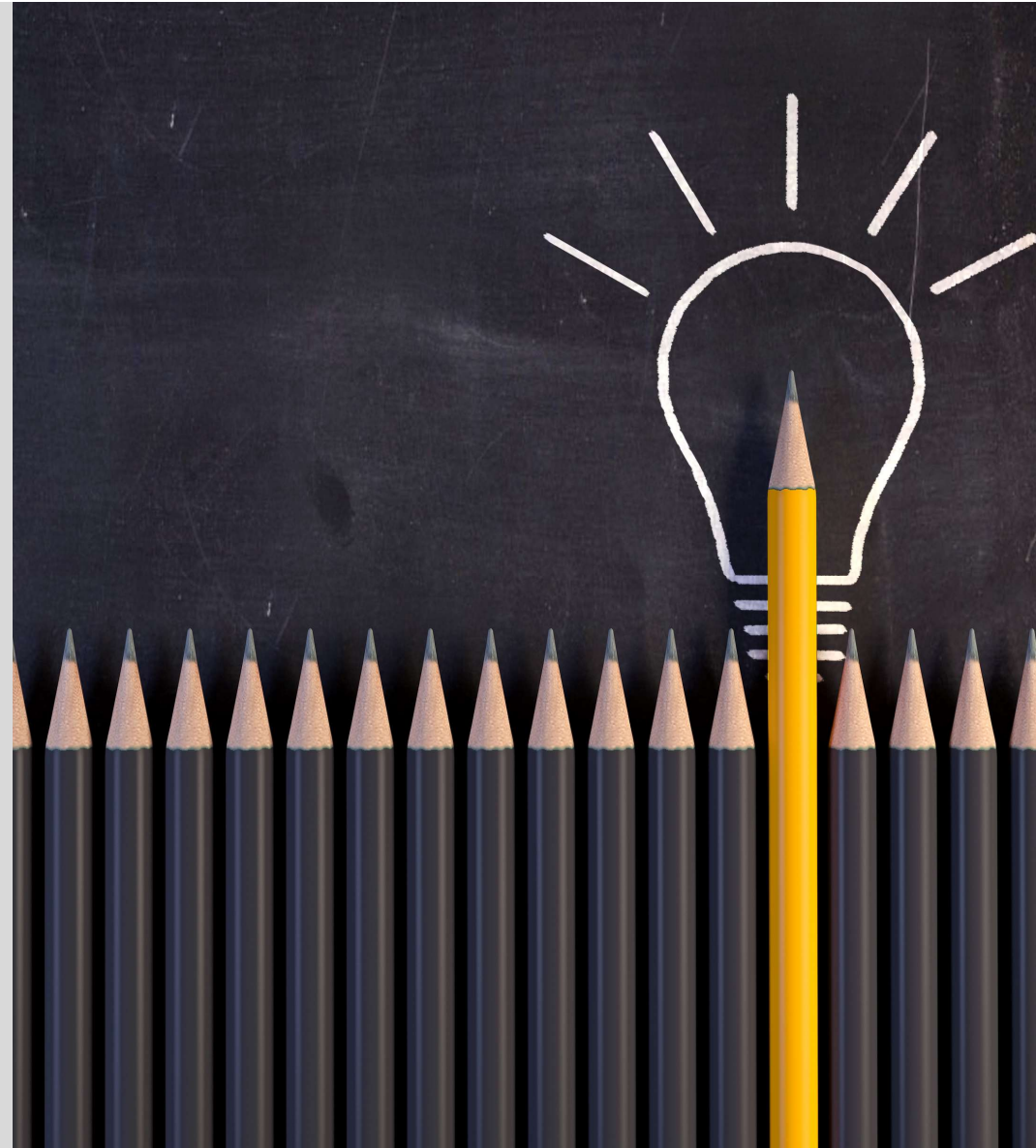


A general guideline is to allocate 10%-15% of project costs for the evaluation.



## Local, Foundation, and Federal Grant Experience:

1. IES
2. USDOE
3. NSF (DRK-12, REU, ITEST, CAREER, ExLENT, IUUSE)
4. NIH (SEPA)
5. HRSA
6. USDA
7. Bureau of Justice Assistance
8. Spencer Foundation
9. CoRs
10. Urban Child Institute



# Collaborations across campus:

## College of Education

- CEPR
- ICL
- Leadership
- Office of Teacher Education and Clinical Practice

## College of Arts and Sciences

- Chemistry
- Computer Science
- Criminal Justice
- Psychology
- School of Urban Planning

## Herff College of Engineering

- Civil Engineering
- Mechanical Engineering

## Division of Research and Innovation

- Research Development
- Research and Innovation

Center for International  
Education Services (CIES)

College of Communication  
and Fine Arts

Institute for Intelligent  
Systems (IIS)

Loewenberg College of  
Nursing

School of Communication  
Sciences and Disorders

University Schools

# Collaborations within the college:

## College of Education

Working with Dr. Amanda Rockinson-Szapkiw in ICL evaluating her NSF IUSE grant

- ❖ Year 1, we conducted interviews with all the project members
- ❖ Monitored the implementation of components and the quality of online mentor/mentee modules
- ❖ Provided the PI with an annual summary

# Collaborations within the college:

## College of Education

US Dept of Education **ASPIRE** project (*Advancing School Counseling Programs by Increasing Representation and Experiences*) with **Dr. Melanie Burgess & Dr. Michelle Brasfield (CEPR)**

- ❖ Five-year mixed methods evaluation
- ❖ Attend trainings and participate in advisory board
- ❖ Develop data collection instruments with project team
- ❖ Conduct focus groups and site visits to provide feedback on fidelity of implementation
- ❖ Analyze evaluation data to provide formative and summative evaluation reports

# Collaborations outside the college:

## College of Arts & Sciences

Working with Dr. Kan Yang in Computer Science evaluating an NSF CyberCorps Scholarship for Service grant

- ❖ Interviewing and surveying program students yearly
- ❖ Reviewing all data collected by project team
- ❖ Writing a final summative report

## Research and Innovation

Working with Dr. Cody Behles in Division of Research and Innovation on the Delta Regional Authority Pilot called DRIVE

- ❖ Surveying 8 Delta regional community partners in TN, AR, and MS about their current knowledge of grants
- ❖ Surveying the community partners after most events and trainings to see if they are helpful and effective
- ❖ Assess community partners' knowledge at the end of the grant

# Local and National Partners

- Smithsonian Science Education Center
- Virginia Department of Education
- Heinemann
- UT Health Science Center
- Memphis-Shelby County Schools
- Seeding Success
- ALLMemphis
- Urban Child Institute
- Women's Foundation
- Shelby County Office of Reentry



Smithsonian  
*Science Education Center*



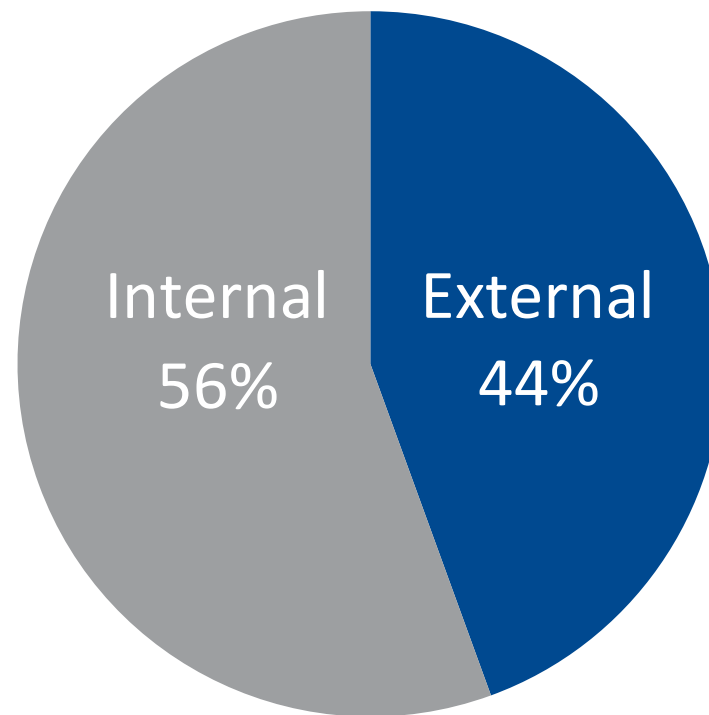
seeding success



VIRGINIA DEPARTMENT OF  
EDUCATION



# We are currently working on 18 grants



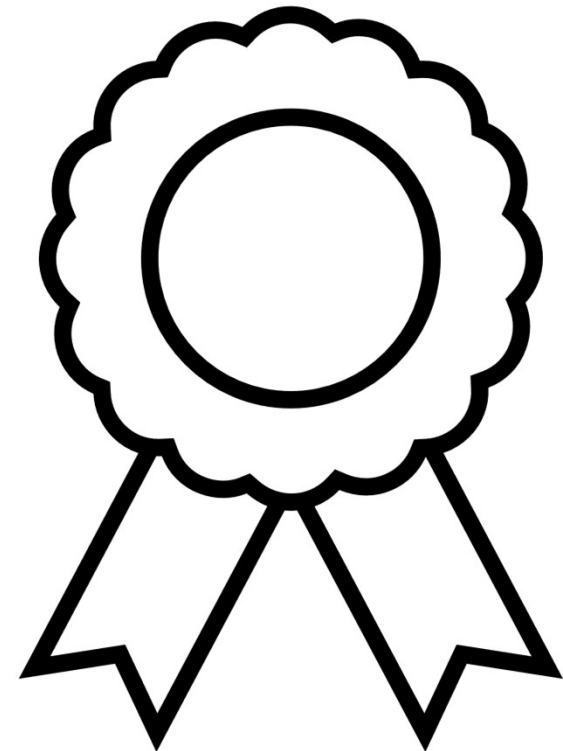
# Services Offered

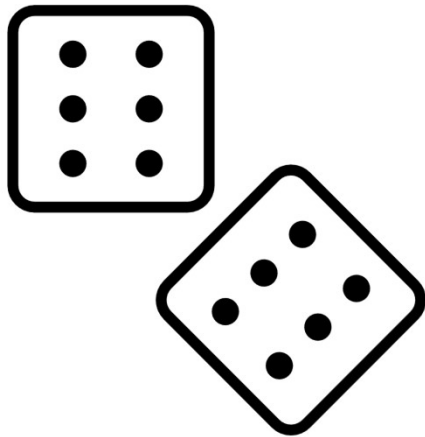


## Research and evaluation design:

### Core project team members

- PI/Co-PI
- Key/Senior personnel
- Pre-K to Postsecondary levels
- Experience in areas outside of, but related to, education:
  - Economic impact studies
  - Criminal justice reform
  - Poverty reduction





## Research and evaluation design:

### Expertise in Quasi-Experimental (QED) and Randomized Controlled Trials (RCTs)

- Over **30 years** of experience
- We apply the **most rigorous** methods and analyses possible based on the **needs of the study** and the **data available**, adapting the design as needed.

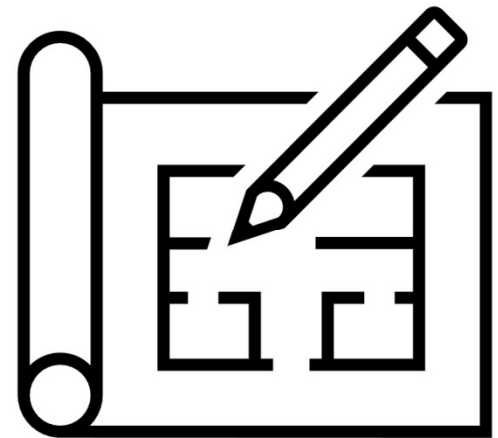
## Research and evaluation design:

### Independent third-party evaluation

---

CREP will develop an evaluation plan designed to answer the **research questions** and that can meet rigorous **WWC standards**.

As an **external evaluator**, CREP has no vested interest in the outcomes, which strengthens the findings.



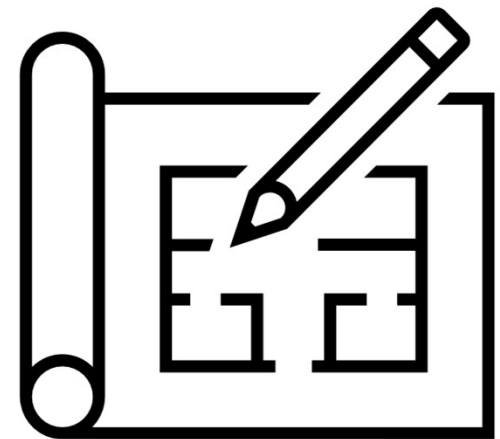
## Research and evaluation design:

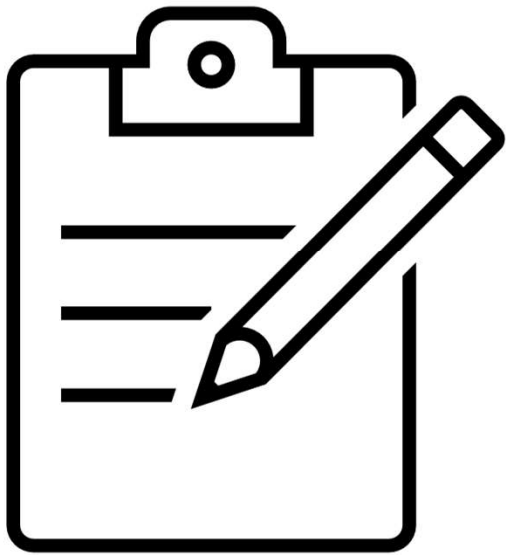
### Independent third-party evaluation

---

A well-designed **evaluation plan** from CREP will help with:

1. Identifying **strengths and weaknesses** of the project/program
2. Facilitating **learning and improvement**
3. Guiding **decision-making and resource allocation**
4. Demonstrating **accountability** to stakeholders





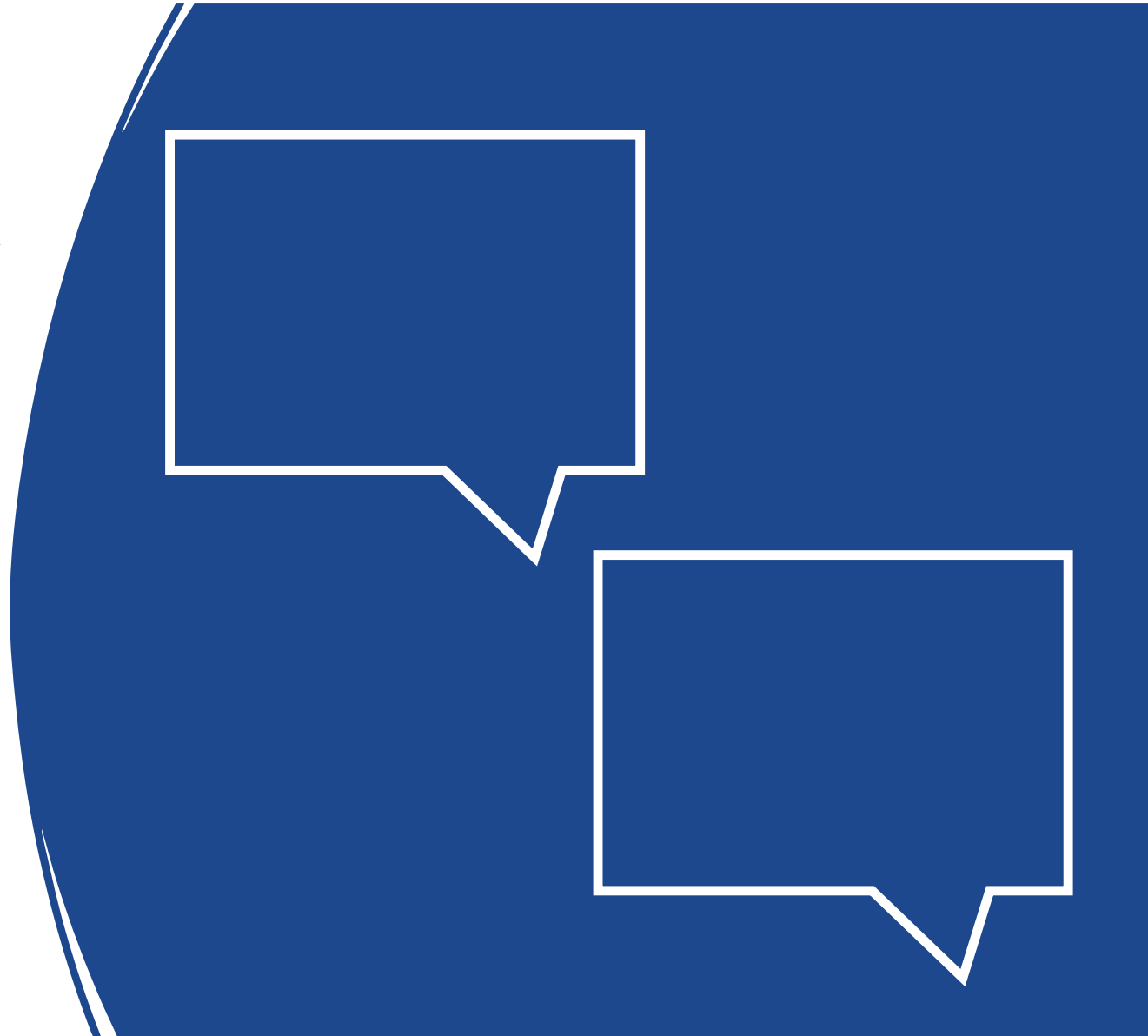
## Project Logistics and Management: Diverse Team

- With CREP, you get our **entire team**
- Not only **capable researchers**, but **research faculty and staff** who can support Faculty in the College and external partners with **project management** by helping run the project, providing technical support, managing budgets, etc.

## Project Logistics and Management:

### Instrument Development/Validation

- **Develop and validate** surveys, interview and focus group, and observation measures
- Use **standardized, established** instruments or assessments





## Project Logistics and Management:

### Data Collection and Management

CREP has expertise in **collecting, managing, and analyzing** large qualitative and quantitative data sets; restricted use data; individual level data.

---



## Project Logistics and Management:

### Data Collection and Management

With CREP conducting data collection and analysis, the PI can focus on **program implementation.**

---





## Project Logistics and Management:

### Data Collection and Management

When we serve as **independent** from research team, CREP is well positioned to collect **open and honest** feedback from participants.

---

# Project Logistics and Management: Data Collection and Management

## Quantitative and Qualitative data entry and management:

CREP not only **collects** the data, but we create databases and carefully **review data** for errors, missing data, and inconsistencies.



# Project Logistics and Management: Data Collection and Management

## Data Security & Storage:

CREP has **secure drives and networks** to collect, transfer, and store sensitive data, adhering to privacy standards, and restricted data use policy when applicable.





## Project Logistics and Management:

### Data Analyses

Qualitative analyses: various **transcription and coding** approaches

Quantitative analyses: ranging from **descriptive** to **advanced statistics** (e.g., multi-level models)

---



## Proposal Development: Grant Proposal Partners

*CREP can:*

- support **alignment** between the RFP requirements and the proposal narrative.



## Proposal Development:

### Grant Proposal Partners

*CREP can:*

- offer **guidance** to strengthen the research design.

# How to Engage with Us

# Other Ways to Partner and Collaborate



Opportunities for COE  
faculty to work on CREP  
projects



Dissertation & Search  
Committee Members



Professional  
Development



Class  
Presentations



Potential for Data  
Mining



# Other Ways to Partner and Collaborate



CREP will also identify and share grant opportunities that align with faculty members' area of research



# Other Ways to Partner and Collaborate



CREP may identify grants where we can serve as PI, but also want to collaborate with faculty as subject matter experts, or program implementers



# Approaching CREP About Grants



Provide a copy of the solicitation (RFP, RFI, RFA, etc.)



Meet to discuss roles and responsibilities, which ultimately informs the budget



Provide a draft of project narrative with **adequate lead time** to develop and write an evaluation plan or collaborate on the full proposal (4-6 weeks best)



Discuss budget to make sure your project and evaluation is adequately and appropriately funded



In Summary...





## What we bring to the table...

- We do this day-in day-out
- The three presenters have nearly 50 years of experience
- CREP faculty and staff work 12 months, so projects continue year-round
- Grants often require an external evaluation that is adequately funded
- CREP's evaluation plans typically receive all points awarded
- Accessible, available, flexible, knowledgeable, and excellent at communication
- We're a good deal: You get an entire team with both research design and statistics expertise



Don't forget...

- Reach out to us early if you are considering applying for a grant
- Proposal development partners with research design and project narrative
- While you may be a content-area expert, we can provide the methodological expertise
- In addition to research, CREP also participates in service for the College and University (committees, class presentations, trainings, etc.)

# How to reach us



**Todd Zoblotsky, Ed.D.**

*Research Director & Research Professor*  
901.678.4582 | tzbltsky@memphis.edu

**Cindy Muzzi, M.S.**

*Assistant Director*  
901.678.3620 | clencke@memphis.edu

**Carolyn Kaldon, Ph.D.**

*Research Associate Professor*  
901.678.3670 | carolyn.kaldon@memphis.edu

# Thank You!





# Questions?

