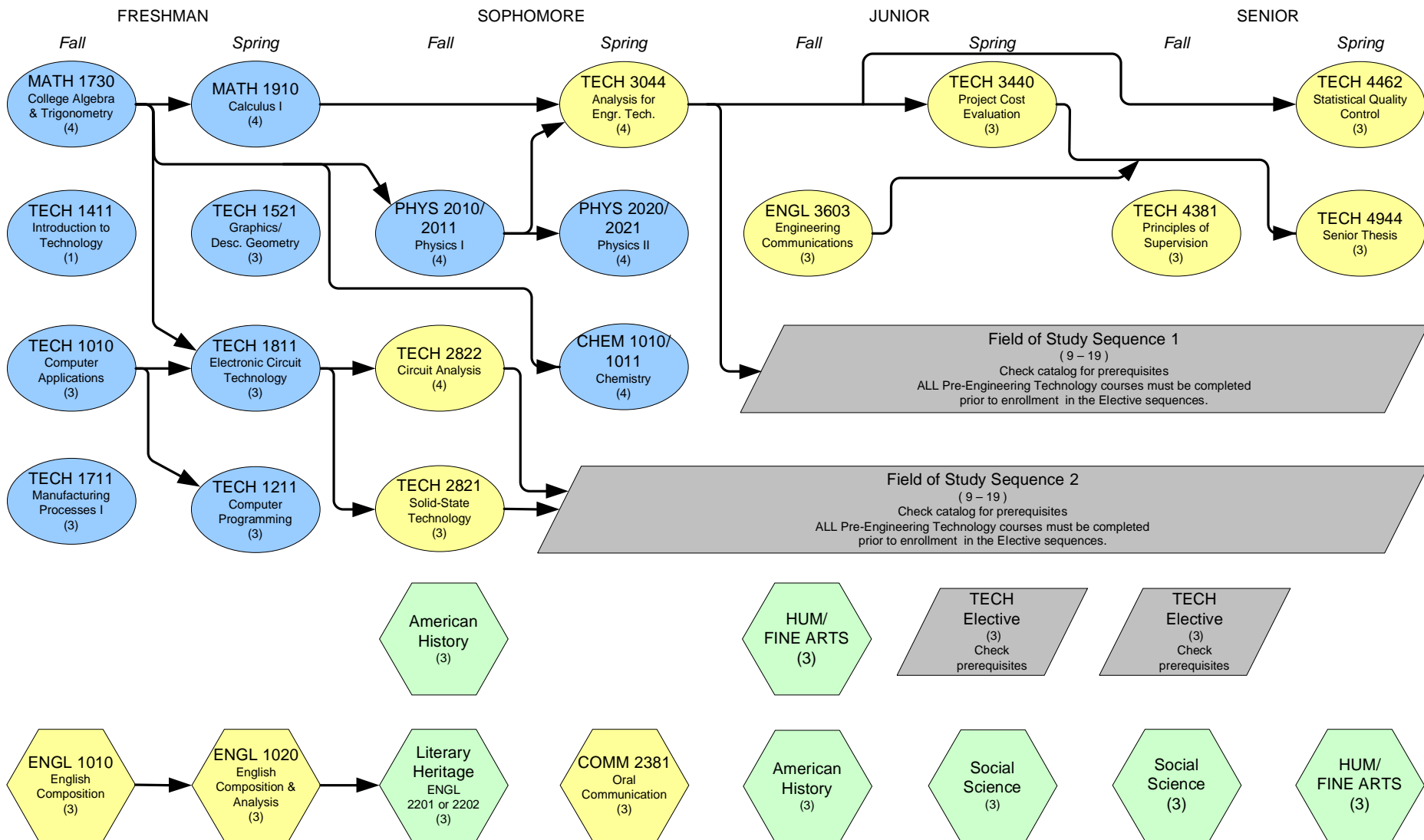


# BACHELOR OF SCIENCE IN ENGINEERING TECHNOLOGY 2009-2010



Credit Hours: 14

16

17

18

15-16

15-16

15-16

15

**Notes:**

- University of Memphis residency requires a minimum of 60 semester hours from accredited 4-year institutions.
- College of Engineering residency requires that 30 of the last 60 hours earned be upper division hours in the College of Engineering.
- Minimum 2.0 GPA (Overall and U of M) required for graduation.
- Must earn a grade of "C-" or better in all required MATH and TECH courses and ENGL 1010, 1020, 3603. Also pertains to any course substitutions.
- Complete a minimum of two Elective Course Sequences, selected in consultation with advisor.
- Immediate prerequisites for core course requirements shown — other prerequisites may exist. Check the current catalog and observe prerequisites when enrolling for courses.



Pre-Engineering  
Technology  
Courses



Gen. Ed.  
Electives



Prerequisite



Core Courses



Field of Study  
TECH Courses

**Total Credit Hours:**  
**125-128**