

BOARD OF TRUSTEES



G. Douglas Edwards

Doug Edwards is President of the Edwin M. Jones Oil Company of San Antonio. He was previously the CEO of Morgan Keegan and Company, a division of Regions Financial Corporation. Doug currently serves as senior advisor to Brown Brothers Harriman, a director of Microban International Corporation, a director of the SIFMA Foundation for Investor Education and Chairman of the Baptist Memorial Healthcare Foundation. He is the past Chairman of the Teach for America Regional Board. Doug is a University of Memphis graduate and a member of its Board of Visitors. In 2008, he was awarded the University's Distinguished Alumni Award.



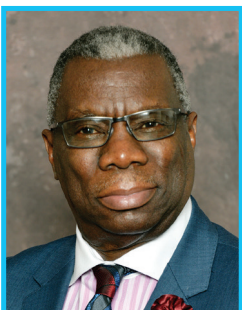
Marvin R. Ellison

Marvin Ellison is Chairman and Chief Executive Officer of JCPenney. Before joining JCPenney in November 2014, he spent 12 years as an executive with Home Depot and 15 years with Target Corporation. Marvin serves on the Board of Directors for the National Retail Federation and FedEx. He is actively involved in philanthropic efforts, including mentoring programs for at-risk youth. Marvin was named to Fortune's "World's Greatest Leaders in 2016" and the "2016 Corporate Executive of the Year" by Black Enterprise. He earned a Bachelor's degree in Marketing from the University of Memphis and an MBA degree from Emory University.



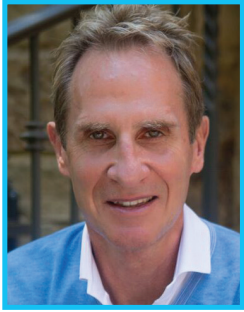
Alan B. Graf, Jr.

Alan B. Graf Jr. is Executive Vice President and Chief Financial Officer of FedEx Corporation. He is responsible for all aspects of FedEx Corporation's global financial functions and is a member of the five-person Executive Committee. Before FedEx Corporation was formed in 1998, Alan served as Executive Vice President and Chief Financial Officer of FedEx Express. Alan earned his Bachelor's degree and MBA from Indiana University, where he is a member of the Academy of Alumni Fellows. He serves on the Board of Directors for NIKE Incorporated, Mid-America Apartment Communities Incorporated, Methodist Le Bonheur Healthcare, and the Indiana University Foundation.



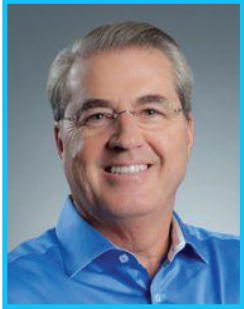
Cato Johnson

Cato Johnson has served as Senior Vice President of Public Policy and Regulatory Affairs at Methodist Le Bonheur Healthcare since 1985. Active in public service for many years, Cato is former chair of the Tennessee Higher Education Commission and has served the University of Memphis, Southwest Tennessee Community College, and Shelby County Schools in many capacities. Currently he is chairman of the TennCare Medical Advisory Committee and a member of the State Board of Education and Leadership Tennessee - Class IV. Cato earned a Bachelor's degree and a Master's degree from Memphis State University (now the University of Memphis).



R. Brad Martin

Brad Martin is Chairman of Chesapeake Energy, Chairman of RBM Ventures, and retired Chairman and CEO of Saks Incorporated. During the 2013-14 academic year, Brad served as the Interim President of the University of Memphis. He served five terms as a member of the Tennessee House of Representatives, and is involved in several civic and philanthropic activities. Brad graduated from the University of Memphis where he served as president of the student body. He earned an MBA from the Owen Graduate School of Management at Vanderbilt University and was awarded an honorary Doctor of Letters from the University of Memphis.



David North

Dave North is President and CEO of Sedgwick, and has more than 32 years in risk management services. Dave has served on the board of the Worker's Compensation Research Institute, is past chairman of the board of the Integrated Benefits Institute, and is a member of the Business Insurance Women to Watch Advisory Board. Dave is the director for The Institutes, the leading provider of professional education for the risk management and property-casualty insurance industry. Dave previously served on the University of Memphis Board of Visitors and concurrently serves on the Foundation Board and the UofM President's Innovation Board.



Carol Roberts

Carol Roberts is Senior Vice President and Chief Financial Officer for International Paper. Carol leads the global finance organization, including Internal Audit, Tax, Accounting, Trust Investments, Investor Relations, Treasury and Strategic Planning, and Information Technology. Carol joined IP after earning a Bachelor of Science degree in Mechanical Engineering from Yale in 1981. She has held numerous positions in manufacturing, operations, human resources and general management. Carol serves on the Yale University Council, which advises the Yale president on key academic and administrative issues. Carol also serves on the Board of Directors and is Chair of the Audit Committee for Alcoa.



Susan Springfield

Susan Springfield is Executive Vice President and Chief Credit Officer for First Horizon National Corporation and First Tennessee Bank. She is an executive sponsor of First Horizon's Inclusion and Diversity Council and their Women's Initiative. Susan is a board member for the Family Safety Center and Streets Ministries. She is a past board member for Hutchison School, SRVS, Le Bonheur Foundation, Rise Foundation, the Women's Foundation, and is a 2002 Leadership Memphis graduate. Susan earned her Bachelor's degree in Management and her MBA in Finance from the University of Memphis, and completed the Wharton School of Business Advanced Risk Management Program.

ELECTED FACULTY REPRESENTATIVE



Katharine Traylor Schaffzin

Kate Schaffzin is in her eighth year as a professor at the University of Memphis Cecil C. Humphreys School of Law. She previously taught at the University of North Dakota School of Law and Temple University Beasley School of Law. Before she began teaching, Kate represented clients as a construction litigation associate at Pepper Hamilton LLP in Philadelphia and Mazur Carp & Rubin, PC, in New York. She also served as a law clerk to U.S. District Judge James Knoll Gardner. Kate earned a Juris Doctor and a Master of Laws degree from Temple University and a Bachelor's degree from LaSalle University.

STUDENT REPRESENTATIVE - TO BE APPOINTED BY THE TRUSTEES