

County Health Rankings & Roadmaps

Building a Culture of Health, County by County

A Robert Wood Johnson Foundation program

2014 *Rankings* Tennessee



A collaboration between the Robert Wood Johnson Foundation and the University of Wisconsin Population Health Institute.



Support
provided by

Robert Wood Johnson
Foundation



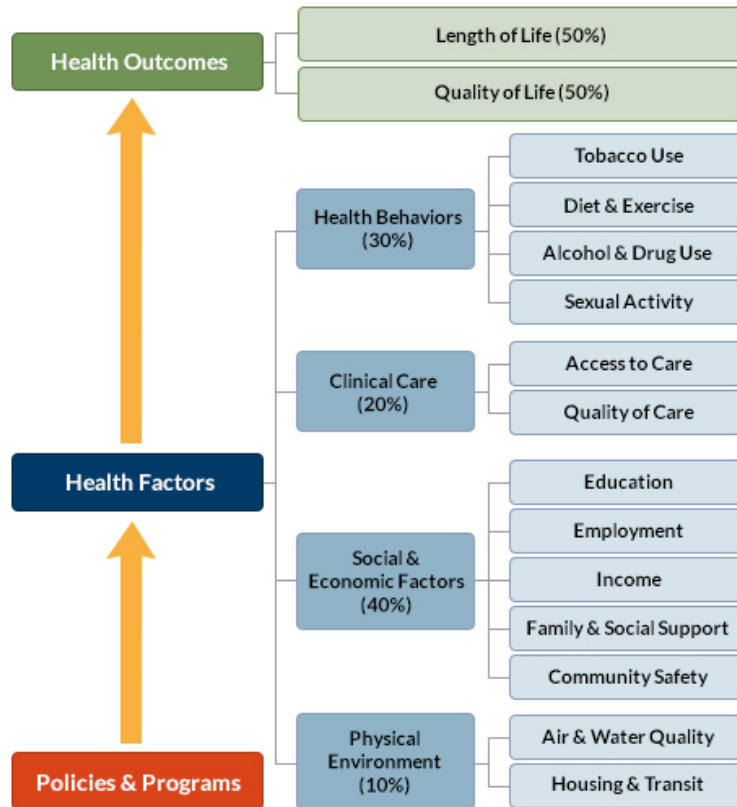
INSIDE FRONT COVER – INTENTIONALLY BLANK

INTRODUCTION

The *County Health Rankings & Roadmaps* program helps communities identify and implement solutions that make it easier for people to be healthy in their schools, workplaces, and neighborhoods. Ranking the health of nearly every county in the nation, the *County Health Rankings* illustrate *what we know* when it comes to what is making people sick or healthy. The *Roadmaps* show *what we can do* to create healthier places to live, learn, work, and play. The Robert Wood Johnson Foundation (RWJF) collaborates with the University of Wisconsin Population Health Institute (UWPHI) to bring this program to cities, counties, and states across the nation.

WHAT ARE THE COUNTY HEALTH RANKINGS?

The *County Health Rankings* measure the health of nearly every county in the nation. Published online at countyhealthrankings.org, the *Rankings* help counties understand what influences how healthy residents are and how long they will live. The *Rankings* look at a variety of measures that affect health, such as high school graduation rates, access to healthy foods, rates of smoking, obesity, and teen births. Based on data available for each county, the *Rankings* are unique in their ability to measure the overall health of each county in all 50 states. They have been used to garner support for local health improvement initiatives among government agencies, healthcare providers, community organizations, business leaders, policy makers, and the public.



HOW ARE PEOPLE USING THE RANKINGS?

- Ø Highlighting community success
- Ø Identifying root causes of poor health
- Ø Supporting policy change
- Ø Engaging communities in health improvement

For more information, visit countyhealthrankings.org

WHAT ARE THE ROADMAPS TO HEALTH?

The *Roadmaps to Health* help communities bring people together to look at the many factors that influence health, select strategies that work, and make changes that will have a lasting impact. The *Roadmaps* focus on helping communities determine what they can do and what they can learn from others.

What You Can Do

The *Roadmaps to Health* Action Center provides step-by-step guides, tools, and webinars to help groups working to improve the health of their communities. Community Coaches also provide customized consultation to local communities that have demonstrated a willingness to address factors that we know influence health, such as education, income, and community safety.

The Action Center also features *What Works for Health* – a searchable database of evidence-informed policies and programs that can improve health.

Learning From Others

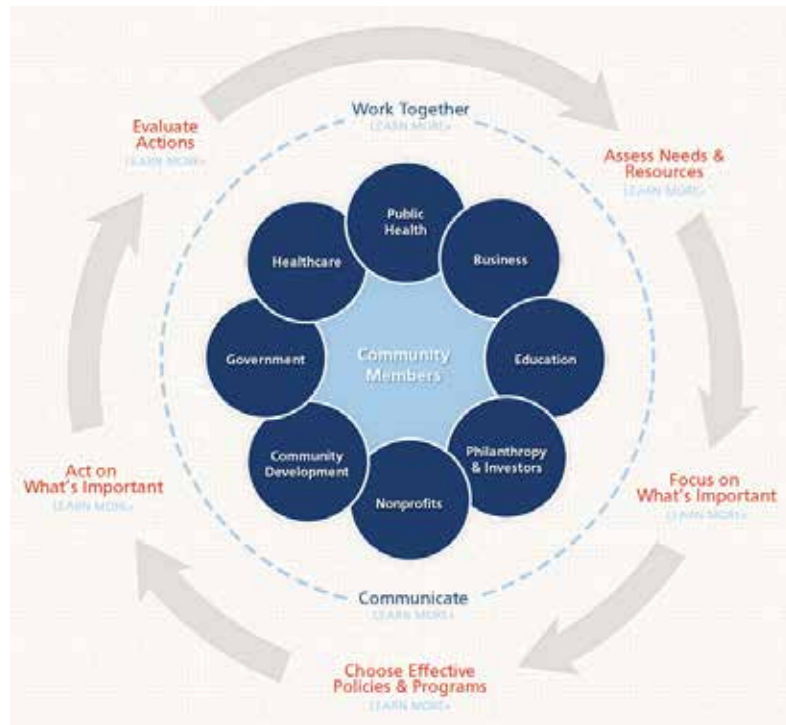
Honoring the efforts of communities working at the forefront of health improvement, the Robert Wood

Johnson Foundation annually awards the *RWJF Culture of Health Prize* to outstanding communities that are working toward better health. The *Prize* recognizes communities with strong and diverse partnerships that are coming together with a shared vision and commitment to address multiple factors that affect health and make lasting changes that create a culture of health for all. Visit countyhealthrankings.org or rwjf.org/prize to learn about the work of past prize winners.

At countyhealthrankings.org, we also feature stories from communities across the nation who have used data from the *County Health Rankings* or have engaged in strategies to improve health. For example, you can learn from the successes and challenges of the 30 *Roadmaps to Health* Community Grantees. These grantees are working to create positive policy or systems changes that address social and economic factors that influence how healthy people are and how long they live, such as education and community safety. You might also want to contact your local affiliate of United Way Worldwide, the National Business Coalition on Health, or the National Association of Counties - their national parent organizations have partnered with us to raise awareness and stimulate action to improve health in their local members' communities.

How can you get involved?

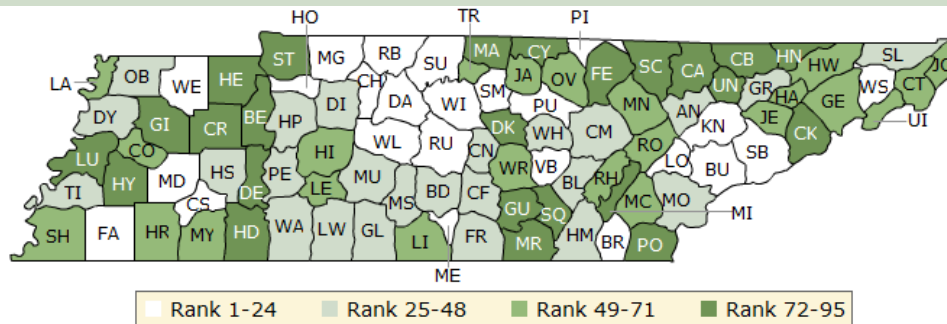
In communities large and small, people from all walks of life are taking ownership and action to improve health. Visit countyhealthrankings.org to get ideas and guidance on how you can take action in your community. Working with others, you can improve the health of your community.



The green map below shows the distribution of Tennessee’s **health outcomes**, based on an equal weighting of length and quality of life.

Lighter colors indicate better performance in the respective summary rankings. Detailed information on the underlying measures is available on our web site.

HEALTH OUTCOMES RANKS

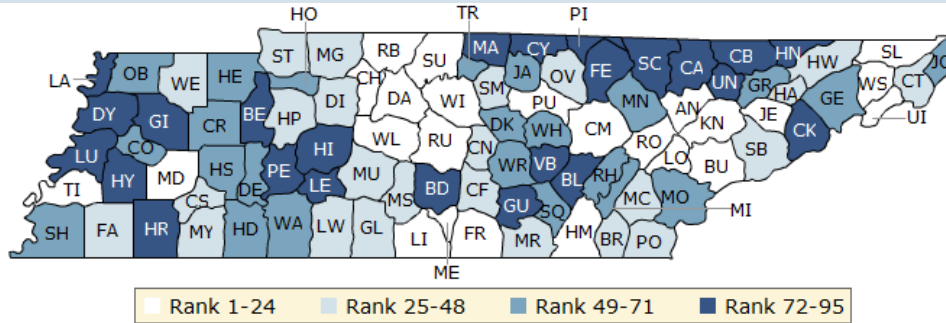


County	Rank	County	Rank	County	Rank	County	Rank
Anderson	42	Fentress	92	Lauderdale	85	Roane	64
Bedford	31	Franklin	34	Lawrence	48	Robertson	8
Benton	86	Gibson	73	Lewis	51	Rutherford	2
Bledsoe	37	Giles	26	Lincoln	62	Scott	89
Blount	3	Grainger	47	Loudon	6	Sequatchie	80
Bradley	20	Greene	60	Macon	83	Sevier	23
Campbell	91	Grundy	95	Madison	24	Shelby	49
Cannon	32	Hamblen	57	Marion	84	Smith	7
Carroll	72	Hamilton	29	Marshall	30	Stewart	87
Carter	55	Hancock	94	Maury	27	Sullivan	44
Cheatham	21	Hardeman	65	McMinn	71	Sumner	4
Chester	12	Hardin	77	McNairy	66	Tipton	41
Claiborne	93	Hawkins	58	Meigs	90	Trousdale	70
Clay	76	Haywood	78	Monroe	25	Unicoi	52
Cocke	88	Henderson	28	Montgomery	10	Union	74
Coffee	38	Henry	81	Moore	11	Van Buren	22
Crockett	50	Hickman	69	Morgan	63	Warren	54
Cumberland	36	Houston	14	Obion	43	Washington	19
Davidson	13	Humphreys	40	Overton	61	Wayne	45
Decatur	75	Jackson	59	Perry	35	Weakley	18
DeKalb	82	Jefferson	53	Pickett	16	White	39
Dickson	46	Johnson	56	Polk	79	Williamson	1
Dyer	33	Knox	15	Putnam	9	Wilson	5
Fayette	17	Lake	68	Rhea	67		

The blue map displays Tennessee’s summary ranks for **health factors**, based on weighted scores for health behaviors, clinical care, social and economic factors, and the physical environment.

Lighter colors indicate better performance in the respective summary rankings. Detailed information on the underlying measures is available on our web site.

HEALTH FACTORS RANKS



County	Rank	County	Rank	County	Rank	County	Rank
Anderson	12	Fentress	78	Lauderdale	94	Roane	14
Bedford	72	Franklin	18	Lawrence	47	Robertson	19
Benton	76	Gibson	77	Lewis	81	Rutherford	4
Bledsoe	90	Giles	45	Lincoln	13	Scott	93
Blount	6	Grainger	58	Loudon	7	Sequatchie	59
Bradley	27	Greene	55	Macon	88	Sevier	37
Campbell	82	Grundy	87	Madison	22	Shelby	57
Cannon	39	Hamblen	42	Marion	44	Smith	30
Carroll	52	Hamilton	9	Marshall	41	Stewart	46
Carter	35	Hancock	95	Maury	34	Sullivan	10
Cheatham	11	Hardeman	89	McMinn	32	Sumner	3
Chester	25	Hardin	64	McNairy	48	Tipton	23
Claiborne	79	Hawkins	26	Meigs	71	Trousdale	54
Clay	80	Haywood	83	Monroe	70	Unicoi	20
Cocke	84	Henderson	66	Montgomery	36	Union	73
Coffee	38	Henry	69	Moore	16	Van Buren	91
Crockett	67	Hickman	74	Morgan	51	Warren	63
Cumberland	15	Houston	56	Obion	65	Washington	5
Davidson	24	Humphreys	28	Overton	33	Wayne	61
Decatur	53	Jackson	68	Perry	86	Weakley	43
DeKalb	50	Jefferson	21	Pickett	85	White	62
Dickson	31	Johnson	49	Polk	40	Williamson	1
Dyer	75	Knox	2	Putnam	17	Wilson	8
Fayette	29	Lake	92	Rhea	60		

Summary Health Outcomes & Health Factors Rankings

Counties receive two ranks:

- Health Outcomes
- Health Factors

Each of these ranks represents a weighted summary of a number of measures.

Health outcomes represent how healthy a county is while health factors represent what influences the health of the county.

Rank	Health Outcomes	Rank	Health Factors
1	Williamson	1	Williamson
2	Rutherford	2	Knox
3	Blount	3	Sumner
4	Sumner	4	Rutherford
5	Wilson	5	Washington
6	Loudon	6	Blount
7	Smith	7	Loudon
8	Robertson	8	Wilson
9	Putnam	9	Hamilton
10	Montgomery	10	Sullivan
11	Moore	11	Cheatham
12	Chester	12	Anderson
13	Davidson	13	Lincoln
14	Houston	14	Roane
15	Knox	15	Cumberland
16	Pickett	16	Moore
17	Fayette	17	Putnam
18	Weakley	18	Franklin
19	Washington	19	Robertson
20	Bradley	20	Unicoi
21	Cheatham	21	Jefferson
22	Van Buren	22	Madison
23	Sevier	23	Tipton
24	Madison	24	Davidson
25	Monroe	25	Chester
26	Giles	26	Hawkins
27	Maury	27	Bradley
28	Henderson	28	Humphreys
29	Hamilton	29	Fayette
30	Marshall	30	Smith
31	Bedford	31	Dickson
32	Cannon	32	McMinn
33	Dyer	33	Overton
34	Franklin	34	Maury
35	Perry	35	Carter
36	Cumberland	36	Montgomery
37	Bledsoe	37	Sevier
38	Coffee	38	Coffee
39	White	39	Cannon
40	Humphreys	40	Polk

Rank	Health Outcomes	Rank	Health Factors
41	Tipton	41	Marshall
42	Anderson	42	Hamblen
43	Obion	43	Weakley
44	Sullivan	44	Marion
45	Wayne	45	Giles
46	Dickson	46	Stewart
47	Grainger	47	Lawrence
48	Lawrence	48	McNairy
49	Shelby	49	Johnson
50	Crockett	50	DeKalb
51	Lewis	51	Morgan
52	Unicoi	52	Carroll
53	Jefferson	53	Decatur
54	Warren	54	Trousdale
55	Carter	55	Greene
56	Johnson	56	Houston
57	Hamblen	57	Shelby
58	Hawkins	58	Grainger
59	Jackson	59	Sequatchie
60	Greene	60	Rhea
61	Overton	61	Wayne
62	Lincoln	62	White
63	Morgan	63	Warren
64	Roane	64	Hardin
65	Hardeman	65	Obion
66	McNairy	66	Henderson
67	Rhea	67	Crockett
68	Lake	68	Jackson
69	Hickman	69	Henry
70	Trousdale	70	Monroe
71	McMinn	71	Meigs
72	Carroll	72	Bedford
73	Gibson	73	Union
74	Union	74	Hickman
75	Decatur	75	Dyer
76	Clay	76	Benton
77	Hardin	77	Gibson
78	Haywood	78	Fentress
79	Polk	79	Claiborne
80	Sequatchie	80	Clay
81	Henry	81	Lewis
82	DeKalb	82	Campbell
83	Macon	83	Haywood
84	Marion	84	Cocke
85	Lauderdale	85	Pickett
86	Benton	86	Perry
87	Stewart	87	Grundy
88	Cocke	88	Macon

Rank	Health Outcomes	Rank	Health Factors
89	Scott	89	Hardeman
90	Meigs	90	Bledsoe
91	Campbell	91	Van Buren
92	Fentress	92	Lake
93	Claiborne	93	Scott
94	Hancock	94	Lauderdale
95	Grundy	95	Hancock

2014 County Health Rankings: Measures, Data Sources, and Years of Data

	Measure	Data Source	Years of Data
HEALTH OUTCOMES			
Length of Life	Premature death	National Center for Health Statistics	2008-2010
Quality of Life	Poor or fair health	Behavioral Risk Factor Surveillance System	2006-2012
	Poor physical health days	Behavioral Risk Factor Surveillance System	2006-2012
	Poor mental health days	Behavioral Risk Factor Surveillance System	2006-2012
	Low birthweight	National Center for Health Statistics	2005-2011
HEALTH FACTORS			
HEALTH BEHAVIORS			
Tobacco Use	Adult smoking	Behavioral Risk Factor Surveillance System	2006-2012
Diet and Exercise	Adult obesity	National Center for Chronic Disease Prevention and Health Promotion	2010
	Food environment index	USDA Food Environment Atlas, Map the Meal Gap	2010-2011
	Physical inactivity	National Center for Chronic Disease Prevention and Health Promotion	2010
	Access to exercise opportunities	OneSource Global Business Browser, Delorme map data, ESRI, & US Census Tigerline Files	2010 & 2012
Alcohol and Drug Use	Excessive drinking	Behavioral Risk Factor Surveillance System	2006-2012
	Alcohol-impaired driving deaths	Fatality Analysis Reporting System	2008-2012
Sexual Activity	Sexually transmitted infections	National Center for HIV/AIDS, Viral Hepatitis, STD, and TB prevention	2011
	Teen births	National Center for Health Statistics	2005-2011
CLINICAL CARE			
Access to Care	Uninsured	Small Area Health Insurance Estimates	2011
	Primary care physicians	HRSA Area Resource File	2011
	Dentists	HRSA Area Resource File	2012
	Mental health providers	CMS, National Provider Identification	2013
Quality of Care	Preventable hospital stays	Medicare/Dartmouth Institute	2011
	Diabetic screening	Medicare/Dartmouth Institute	2011
	Mammography screening	Medicare/Dartmouth Institute	2011
SOCIAL AND ECONOMIC FACTORS			
Education	High school graduation	data.gov, supplemented with National Center for Education Statistics	2010-2011
	Some college	American Community Survey	2008-2012
Employment	Unemployment	Bureau of Labor Statistics	2012
Income	Children in poverty	Small Area Income and Poverty Estimates	2012
Family and Social Support	Inadequate social support	Behavioral Risk Factor Surveillance System	2005-2010
	Children in single-parent households	American Community Survey	2008-2012
Community Safety	Violent crime	Uniform Crime Reporting - FBI	2009-2011
	Injury deaths	CDC WONDER	2006-2010
PHYSICAL ENVIRONMENT			
Air and Water Quality	Air pollution - particulate matter ¹	CDC WONDER	2011
	Drinking water violations	Safe Drinking Water Information System	FY 2012-2013
Housing and Transit	Severe housing problems	HUD, Comprehensive Housing Affordability Strategy	2006-2010
	Driving alone to work	American Community Survey	2008-2012
	Long commute – driving alone	American Community Survey	2008-2012

¹ Not available for AK and HI.

CREDITS

Report Authors

University of Wisconsin-Madison
School of Medicine and Public Health
Department of Population Health Sciences
Population Health Institute

Bridget Catlin, PhD, MHSA
Amanda Jovaag, MS
Julie Willems Van Dijk, PhD, RN
Patrick Remington, MD, MPH

This publication would not have been possible without the following contributions:

Data

Centers for Disease Control and Prevention: National Center for Health Statistics and Division of Behavioral Surveillance
Dartmouth Institute for Health Policy & Clinical Practice

Research Assistance

Jennifer Buechner
Hyojun Park, MA
Elizabeth Pollock
Jennifer Robinson
Matthew Rodock, MPH
Anne Roubal, MS

Communications and Outreach

Burness Communications
Alison Bergum, MPA
Matthew Call
Kate Konkle, MPH
Kitty Jerome, MA
Karen Odegaard, MPH
Jan O'Neill, MPA

Design

Forum One, Alexandria, VA

Robert Wood Johnson Foundation

Abbey Cofsky, MPH – Senior Program Officer
Michelle Larkin, JD, MS, RN – Assistant Vice-President, Program Portfolios
Marjorie Paloma, MPH – Senior Policy Advisor
James S. Marks, MD, MPH – Senior Vice-President and Director, Program Portfolios
Joe Marx – Senior Communications Officer

Suggested citation: University of Wisconsin Population Health Institute. *County Health Rankings 2014*.

County Health Rankings & Roadmaps

Building a Culture of Health, County by County

countyhealthrankings.org



University of Wisconsin Population Health Institute
610 Walnut St, #524, Madison, WI 53726
(608) 265-8240 / info@countyhealthrankings.org

