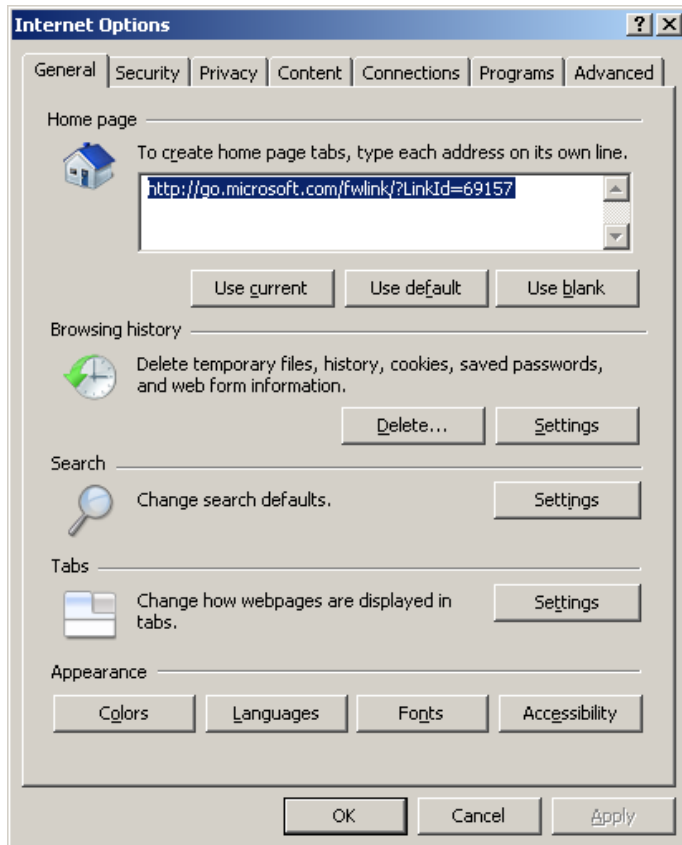


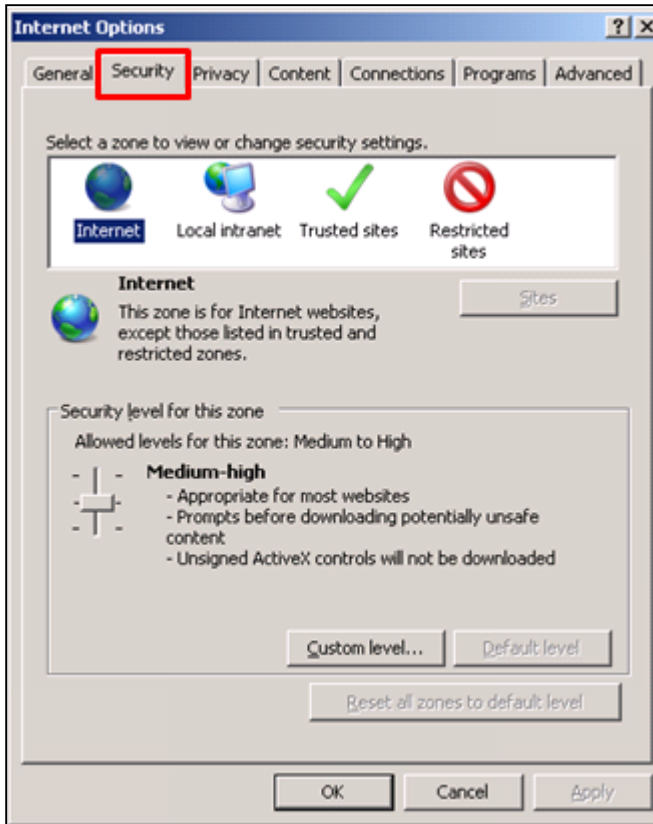
Please follow the below steps to add the \*.dell.com settings in your trusted Sites.

**Add dell pages in trusted sites:**

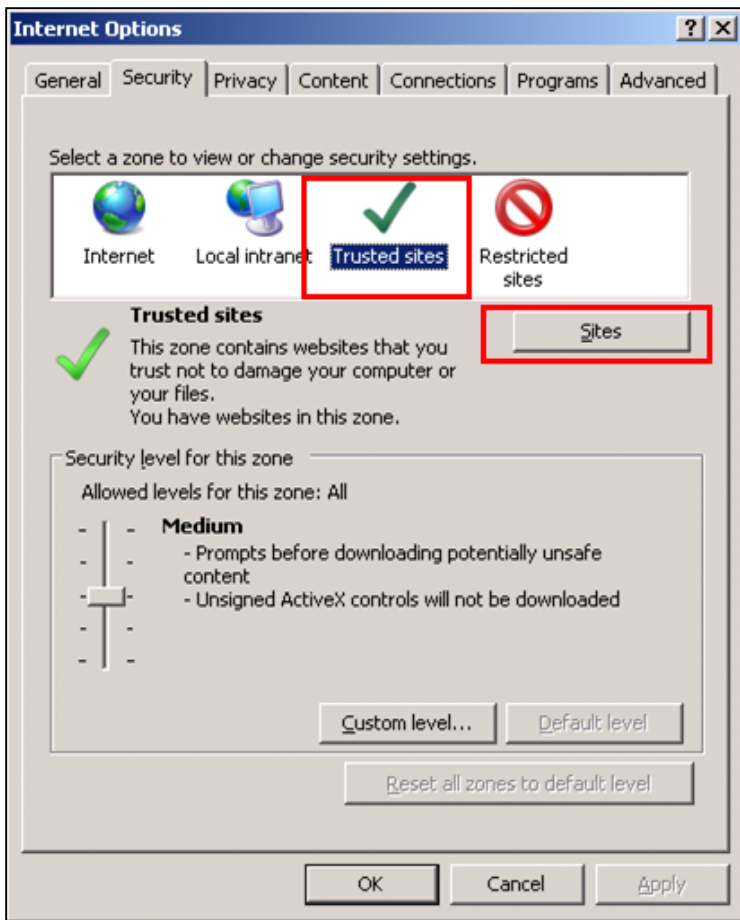
- Open IE Browser
- Click Tools Menu
- Click on “Internet Options” option
- “Internet Options” model window is displayed



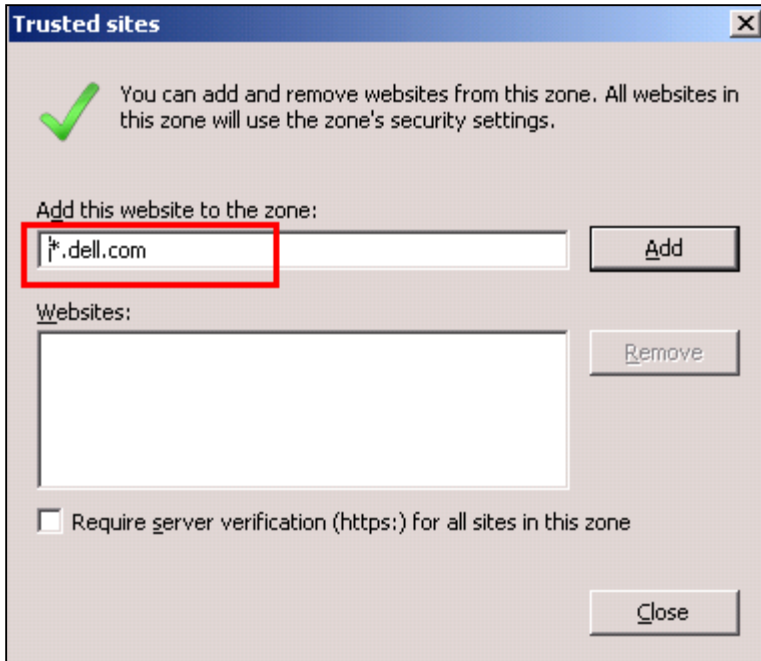
- Select “Security” Tab



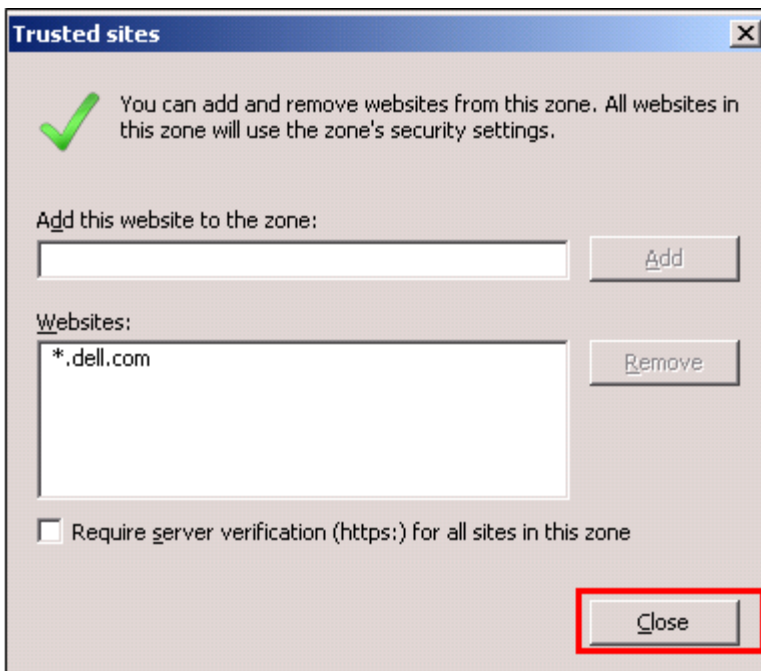
- Select "Trusted Sites" Icon
- Click on Sites button



- “Trusted Sites” child window comes up
- Type “\*.dell.com” in Add this website to the zone text box
- Un-Check require server verification checkbox
- Click on Add button



- “\*.dell.com” gets added to the Websites list box
- **Please Note:** “Require server verification (https) for all sites in this zone” should be unchecked **before** you add \*.dell.com to your trusted sites. \*.dell.com should be NOT be prefixed with https://
- Click on Close button to save the settings and close child window



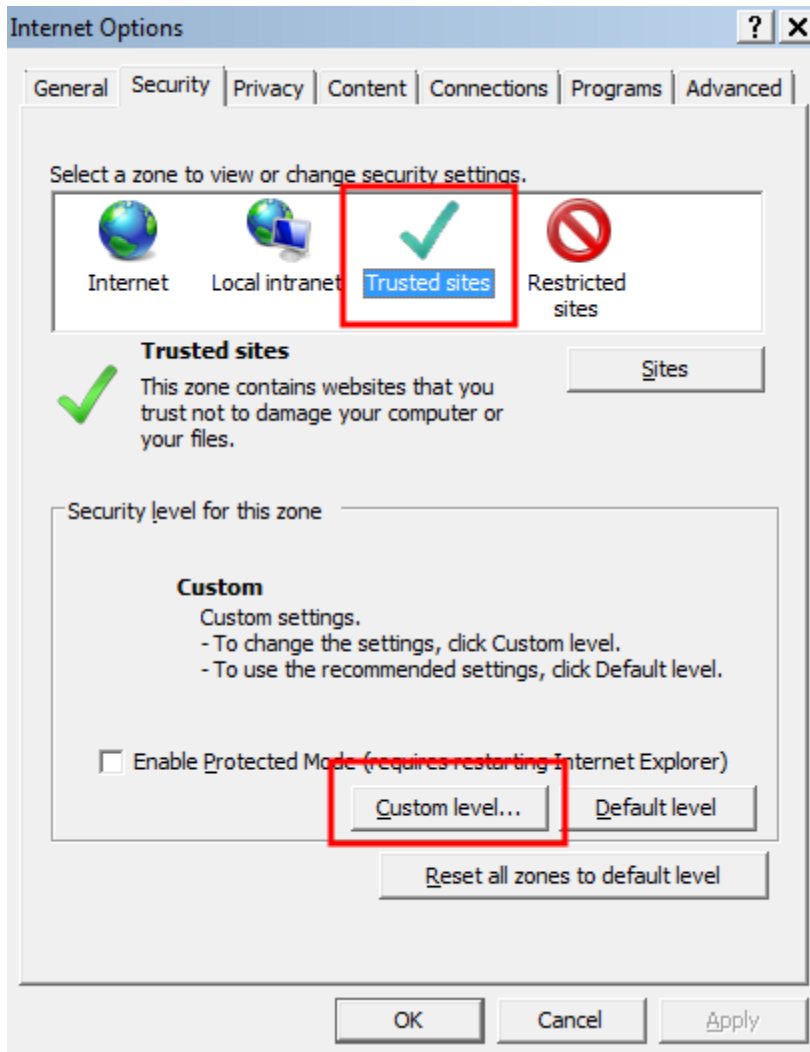
- Click OK button to close model window
- Close and open the IE again

**Please follow the below steps to enable the Mixed content Settings.**

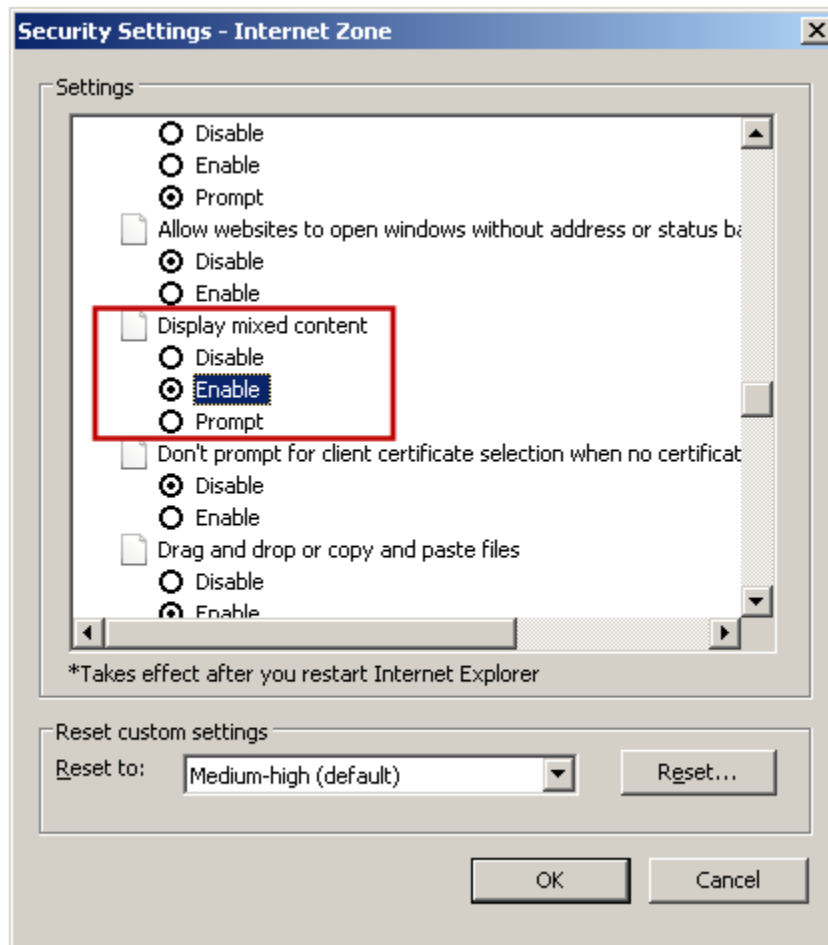
Click on Tools → Internet Options

In the Internet Options dialog, click the “Security” tab.

Pick the zone that you want to change the setting for and click the “Custom Level” button.



In the Settings area, scroll down to the “Miscellaneous” section and modify the area highlighted in the dialog show below to “Enable” mixed content.



Click on “Yes” for activating the mixed content settings and then click on OK at the bottom