



THE UNIVERSITY OF  
**MEMPHIS**<sup>®</sup>  
School of Public Health



# SCHOOL OF PUBLIC HEALTH **MISSION**

Our goal and mission are to advance public health knowledge through educational excellence and conduct innovative scholarly research, while also preparing a community of learners and leaders to improve the health and well-being of populations in the City of Memphis, the state and around the world. We are dedicated to creating a wholesome environment that will foster inclusive and innovative solutions to the public health problems that afflict not only Memphis, but the nation at large.

I strongly believe that the strength of any achievement is not only rooted in the depth of mere passion to bring a positive change but also in an undying optimism for the power of a collective force. Together, we as a community can expand the horizon of possibilities for public health through proactive action and make Memphis a healthy city.

**Ashish Joshi PhD, MBBS, MPH**  
Dean, School of Public Health





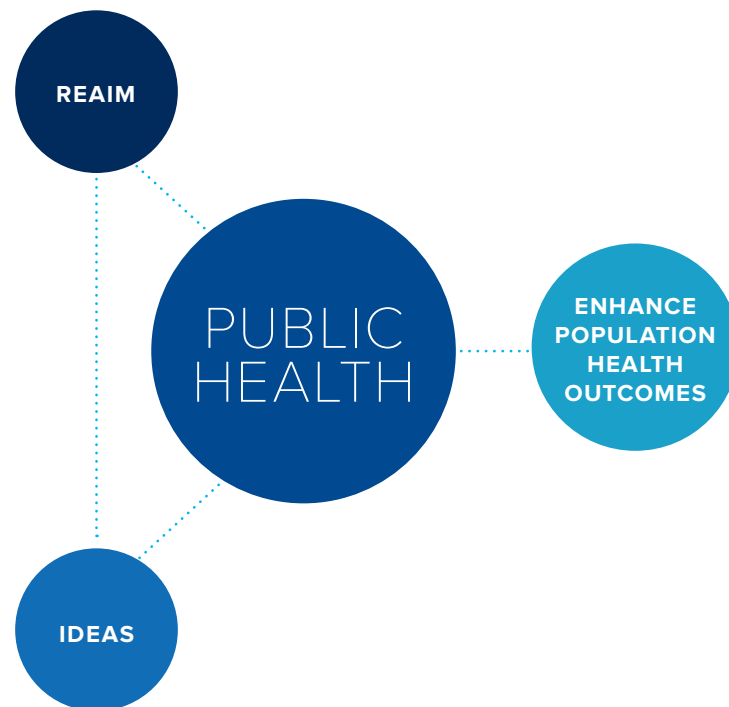
# OUR GOAL IS TO **REAIM** PUBLIC HEALTH **IDEAS**

## REAIM

**R**esearch  
**E**ntrepreneurship  
**A**nalytics  
**I**nformatics  
**M**anagement

## IDEAS

**I**nclusive  
**D**iverse  
**E**quitable  
**A**ccessible  
**S**ustainable





# OUR PROGRAMS



Offered On-Campus



Offered Fully-Online

## Undergraduate Programs



BACHELOR OF SCIENCE  
IN PUBLIC HEALTH (BSPH)  
120 credits



PUBLIC HEALTH MINOR  
18 credits

## Graduate Programs



MASTER OF PUBLIC HEALTH (MPH)  
42 credits



MASTER OF  
HEALTH ADMINISTRATION (MHA)  
53 credits



MASTER OF SCIENCE  
IN BIOSTATISTICS (MS)  
36 credits

## Doctoral Programs



PHD IN EPIDEMIOLOGY  
AND BIOSTATISTICS  
54 credits



PHD IN SOCIAL AND  
BEHAVIORAL SCIENCES  
54 credits

## Graduate Certificates



HEALTH SYSTEMS  
LEADERSHIP  
12 credits



HEALTH ANALYTICS  
15 credits



POPULATION HEALTH  
18 credits



## ► HIGHLIGHTS



ACCREDITED



ACCESSIBLE

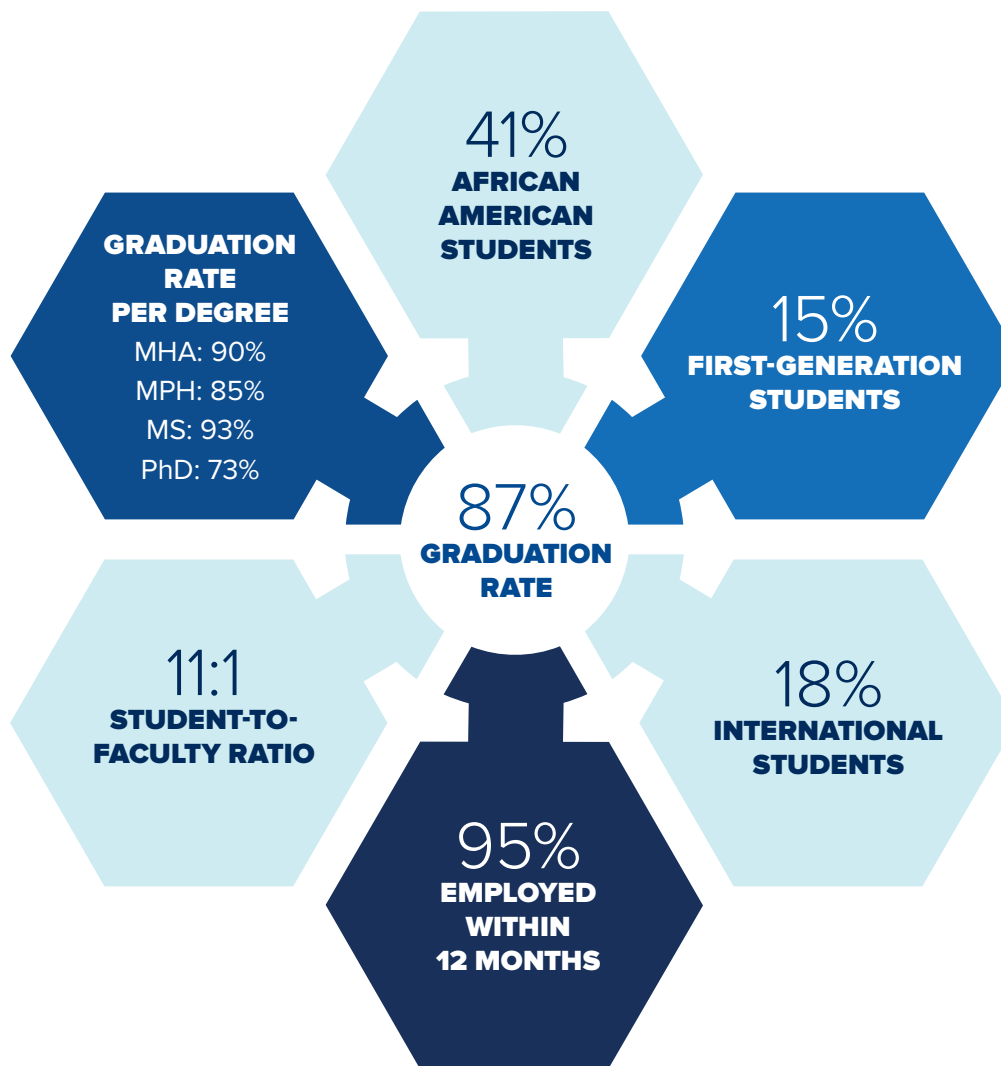


RESEARCH  
DRIVEN



NO GRE  
REQUIRED

## SCHOOL OF PUBLIC HEALTH IN NUMBERS





# EMPLOYMENT LOCATIONS

## Example Locations

- Shelby County Health Department
- St. Jude Children's Research Hospital
- Methodist Le Bonheur Healthcare
- CDC Foundation
- Centers for Disease Control and Prevention
- Washington University School of Medicine
- University of Tennessee Health Science Center
- Le Bonheur Children's Hospital
- Tennessee Department of Health
- Regional One Health
- UT Agriculture Family & Consumer Services
- New Mexico Department of Health
- Oklahoma State Department of Health
- Association of Washington Cities
- Humana
- FedEx Services
- National Highway Traffic Safety Administration
- U.S. Environmental Protection Agency
- Icahn School of Medicine at Mount Sinai
- Shelby County Schools
- Baptist Memorial Health Care



## SCHOOL OF PUBLIC HEALTH CAN LAND YOU JOBS LIKE

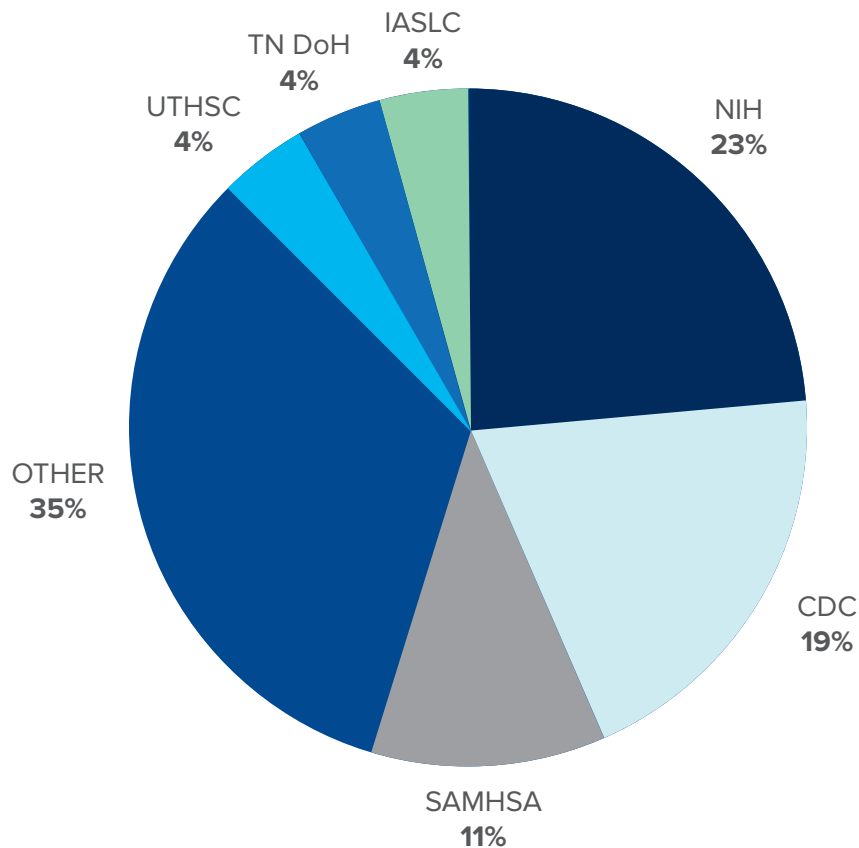
- Project Coordinator
- Clinical Research Associate
- Research Manager
- Epidemiologist
- Public Health Lab Scientist
- Research Project Coordinator
- Clinical Research Coordinator
- Immunization Consultant
- Public Health Nurse
- Senior Clinical Researcher
- Public Health Educator
- Program Evaluator
- Scientific Data Analyst
- Database Analyst
- Lead Data Scientist
- Health Promotion Coordinator



# RESEARCH OPPORTUNITIES

NEARLY 50+  
FUNDED PROJECTS

**Funding Sources**



National Institutes of Health (NIH) | Centers for Disease Control and Prevention (CDC)  
Substance Abuse & Mental Health Services Administration (SAMHSA) | International Association for the Study of Lung Cancer (IASLC)

**Research Topics**





We are dedicated to creating a wholesome environment that will foster innovative solutions to the health problems that afflict not only Memphis but the nation at large and beyond.

---





# APPLICATION DEADLINE



**FOR GRADUATE  
ADMISSIONS VISIT**

**Fall Semester | July 15\***

**Spring Semester | November 15\***



**FOR  
UNDERGRADUATE  
ADMISSIONS  
VISIT**







# STUDENT ASSOCIATIONS

## **Public Health Student Association**

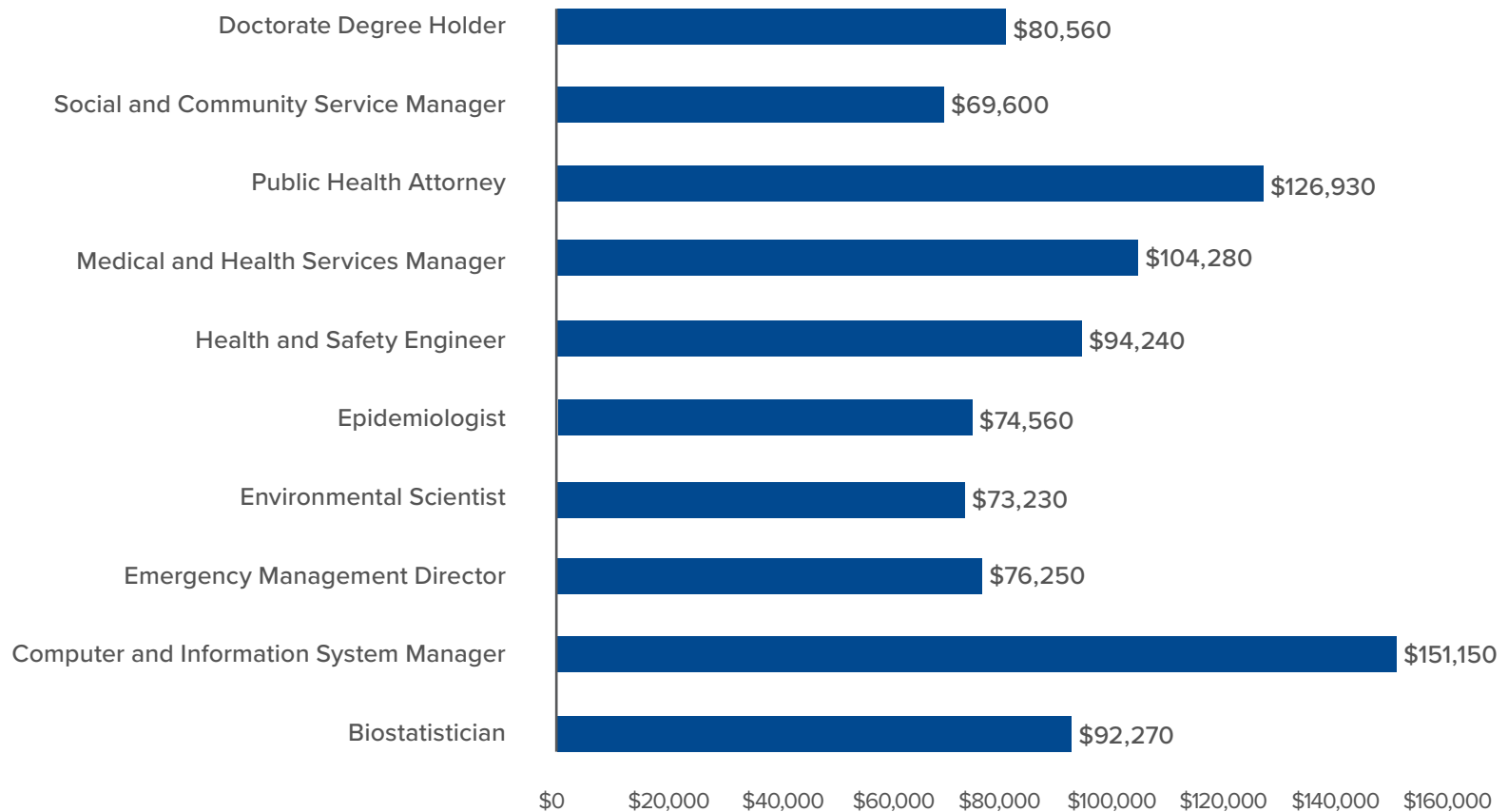
The Public Health Student Association (PHSA) strives to create a strong and enduring foundation for future public health leaders.

## **Master of Health Administration Student Association**

The MHA Student Association (MHSA) is the student activity arm of the MHA program.

# PUBLIC HEALTH CAREERS MEDIAN YEARLY SALARY IN THE U.S.\*

\*Salary information gathered from  
U.S. Bureau of Labor Statistics  
2020 data (publichealthdegrees.org)





Our mission is to advance knowledge through educational excellence and innovative and scholarly research, while also preparing a community of learners and leaders to improve the health and well-being of populations in the City of Memphis, the state and around the world.

---

## ALUMNI TESTIMONIALS



“I chose public health because I wanted to make a change within my community. Giving back to my community is most important to me. There is a need locally and I am dedicated to aiding that need in some way.”

**Jessica Warren, '22**

“My participation in the School of Public Health to get my Master of Public Health Degree absolutely helped change my life, professionally and personally, for the better. The tools that I gained to scrutinize, understand, and evaluate data, both quantitatively and qualitatively, has helped me to shape my worldview in a positive way and helped me to be an effective research staff member and advocate in my community.”

**Shahin Samiei, '11**



“I felt at home here in the School of Public Health and was provided the training to strengthen my analytic skills with which I was able to tackle real-world public health problems. I gained insight into the true impact of public health throughout my training and am grateful for my time pursuing my PhD.”

**Meghan Brooke Taylor, '20**





The University of Memphis is an Equal Opportunity/Affirmative Action University. It is committed to the education of a non-racially identifiable student body. UOM226/FY2223

SCHOOL OF PUBLIC HEALTH  
232 Robison Hall | 901.678.1710

[sphadmissions@memphis.edu](mailto:sphadmissions@memphis.edu) | [memphis.edu/sph](https://memphis.edu/sph)

[f](#) School of Public Health at the University of Memphis | [t](#) @UofMemphisSPH

