



International Graduate Student Housing Guide





YOUR HOME AWAY FROM HOME



ABOUT GRADUATE INTERNATIONAL STUDENT HOUSING

Welcome to Housing and Residence Life at the University of Memphis! We are thrilled you have decided to join our Tiger family. Please use this guide as a reference as you prepare for your arrival to the university and while living with us.

WHY CHOOSE US



Finding a place to live while you attend the University of Memphis may appear daunting, but Housing and Residence Life is here to help you find your home away from home. Living on or near campus is a great way to meet people and become an active member in the campus and Memphis community. As an international student, it is our priority to provide you with resources and accommodations that promote your academic and personal success while at the University of Memphis.



COMPLETE HOUSING APPLICATION

- Before applying for campus housing, be sure to review the types of housing options offered for international students. There are two primary housing options for international graduate students: Yugo Memphis Southern and Graduate Student and Family Housing (GSFH). More information regarding these options is found later in this guide.
- If you are interested in receiving housing through the University of Memphis, you must complete an online application form. Before applying for housing, you must have applied for admission to the University of Memphis and received your University Identification Number. To apply for housing, go to myMemphis>Student Pages>My Resources tab. From here, go to 'Housing and Residence Life'- 'Housing Application Portal'. Click on 'Application' and choose the appropriate semester, then follow the steps through the portal. Be sure to click on the application for 'International Graduate Students' to apply for housing at Yugo or 'Student Family Apps' to apply for housing at GSFH. If you are interested in having a specific roommate, be sure to list their information on your application. After the application has been submitted, you will receive a confirmation email to your UofM email address.
- If you are interested in rooming with certain people, be sure to include a roommate preference when completing your application. Please know that selecting a roommate does not guarantee you will live with them but will help Housing and Residence Life when making room assignments.
- If you complete a housing application and are assigned a space, this space can not be subleased to other students or individuals.

REVIEW UNIVERSITY OF MEMPHIS HOUSING POLICIES AND STUDENT CODE OF CONDUCT

- Before arriving to and living on campus be sure to read the University of Memphis Housing Policies and the Student Code of Conduct. Reviewing these policies will prepare you for your arrival to campus, so you are aware of the requirements of being both a resident and student at the University of Memphis. The Housing Policies are on Housing and Residence Life website under the Helpful Resources tab using this link: memphis.edu/reslife/housing101/index.php. The Student Code of Conduct can be accessed using this link: memphis.edu/osa/students/code-of-rights.php

CHECK YOUR UNIVERSITY OF MEMPHIS EMAIL FOR ROOM ASSIGNMENTS

- Some time after completing your housing application and before you arrive, you will receive an email with your housing assignment. Once you receive this email, the timeframe to cancel your application without penalty will be specified in the notification.

BEFORE YOU ARRIVE

Checklist

COMPLETE PAPERWORK

- Visit the U.S. Department of State for a step-by-step guide on applying for an F-1 visa (I-20). You may also contact the U.S. consulate office in your home country for information about applying for a U.S. visa. usembassy.gov/. Note that a SEVIS fee is required when a new I-20 is issued with a new SEVIS number. ice.gov/sevis/i901. This is required paperwork.
- Follow this link for more information about the required forms needed before your arrival in Memphis: memphis.edu/iss/forms.php. This is required paperwork. Consider purchasing renters' insurance prior to your arrival. Although this is not required by the university, we highly encourage having renters' insurance. Renter's insurance covers losses and damages to personal property and provides liability coverage if someone is injured in your housing space. Renters' insurance is inexpensive, typically only costing \$15-\$30.

RESEARCH TYPES OF TRANSPORTATION

- Transportation in the United States is primarily automobile-based, which may be different from the preferred method of transportation in your home country. If you plan to drive a car while you are here, you can get a Tennessee driver license by getting a letter of support from the International Student Services office. This can be accessed by using this link: apply.memphis.edu/manage/login?realm=&r=/register/?id=ccd6ee25-ba54-4d11-a8d5-15a443a058e4
- Depending on your personal preference and available travel plans, you may travel to Memphis by the following ways:
 - Memphis International Airport (MEM)
 - Amtrak Train Station
 - Greyhound Bus Station
 - Driving from another city

You should inform International Student Services (ISS) of your plans by emailing theworld@memphis.edu, including the date, time, and location of your arrival. The ISS Office will arrange to have a volunteer pick you up and bring you to the University of Memphis Main Campus, where they will help you get your campus ID and check you into your housing assignment.

FAMILIARIZE YOURSELF WITH HOW UNIVERSITY BILLING WORKS

- All charges will be made to your TigerXpress via your myMemphis account. To see these charges, go to myMemphis > Student Pages > My Finances tab.
- Payment plans can be used to help pay for tuition, housing costs and other charges. These can be set up through your TigerXpress account.
- All concerns regarding billing and charges before arriving to campus should be communicated to the University & Student Business Services.

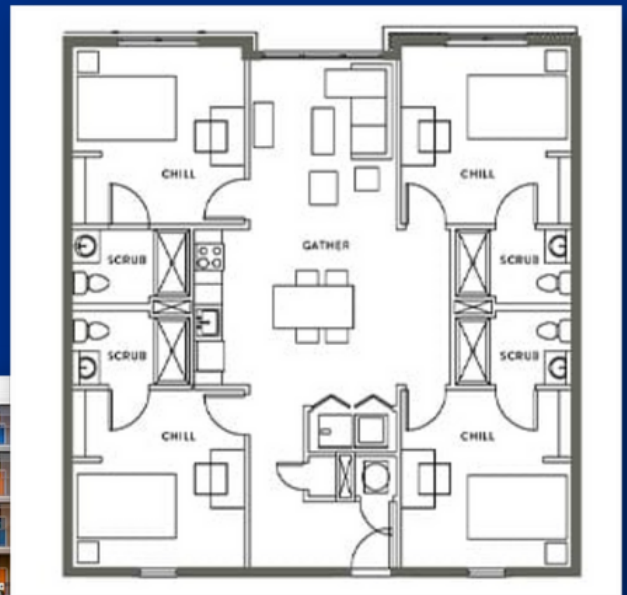
APPLY FOR INTERNATIONAL STUDENT SCHOLARSHIPS

- The University of Memphis selectively awards competitive merit-based scholarships for newly admitted degree-seeking international students on a J-1 or F-1 visa taking classes on campus. Scholarships can be found through Tiger Scholarship Manager at memphis.academicworks.com

HOUSING OPTIONS

YUGO MEMPHIS SOUTHERN

The University of Memphis has partnered with Yugo Memphis Southern to provide individuals with a bedspace in an apartment setup as a 4-bedroom, 4-bathroom space that shares a living room with a flat-screen HDTV, kitchen, and in-unit laundry. Internet and utilities are included. Yugo also provides public and private study lounges, fitness center, theater, lounge, and community pool.



RATE PER PERSON:

\$3350 per semester

\$6700 per academic year

\$670 per month

FOR MORE INFORMATION ABOUT YUGO:

[Visit Website](#)

901.350.7073 (TEXT ONLY)

memphisouthern@yugo.com



Contract for Yugo Memphis Southern included in your application is for the academic year which includes both fall and spring semesters. Students graduating in December or staying for the fall semester for certain reasons can be released from contract without penalty.



HOUSING OPTIONS

GRADUATE STUDENT AND FAMILY HOUSING

Graduate Student and Family Housing is located on the University of Memphis South Campus on Park Avenue, approximately one mile from the main campus. The residents are comprised of students, spouses, and students' children. It is a community different from a typical apartment complex in that most residents are parents and/or students, and many are working full or part-time jobs. Choose from a 1-bedroom or 2-bedroom townhouse or 2-bedroom flat (apartment). These housing options provide air conditioning/heat, a kitchen equipped with all appliances, and cable/internet access. There is also a community center with free laundry units and vending machines, as well as a swimming pool and playground.



1 BEDROOM TOWNHOUSE RATE

\$3850 per semester
\$7700 per academic year
\$770 per month

2 BEDROOM TOWNHOUSE RATE

\$4400 per semester
\$8880 per academic year
\$888 per month

Rates include utilities: up to \$100 monthly cap for 1-bedroom units and up to \$150 monthly cap for 2-bedroom units. Overages will be billed to your student account.

Suggested ITEMS

Below, you can find a recommended list of items you may need during your time at the University of Memphis. Refer to the Shopping and Eating Locations on the next page to see where these items can be purchased once you arrive to Memphis.

BEDROOM

- Sheets (Full Size)
- Pillows & Pillowcases
- Mattress Pad
- Comforter
- Extra Blanket

BATHROOM

- Area Rug
- Towels (bath, hand, washcloths)
- Bathmat/rug (suite bathrooms only)
- Shower Caddy
- Loofah
- Robe
- Toiletries
- Soap Holder

KITCHEN

- Dinnerware
- Utensils
- Drinkware
- Cookware
- Plastic Containers
- Plastic Storage Bags
- Kitchen Tools
- Can Opener
- Drying Rack
- Dish Towels
- Paper Towels
- Dish Soap
- Chip Clips
- Coffeemaker (w/o Burner)

STUDY ITEMS

- Laptop
- Flash Drive
- Backpack
- Pens & Pencils
- Highlighters
- Notebooks
- Printer Paper
- Desk Lamp
- Stapler
- Binder Clips
- Bulletin Board
- Dry Erase Board
- Calendar

LIVING ROOM

- Area Rug
- Picture Frames
- Door Mirror
- Throw Pillows
- Curtains
- Curtain Rod
- Posters
- Command Strips
- Television
- TV Stand
- Alarm Clock
- Iron (w/ Auto Shutoff)
- Hair Dryer, Curling Iron, Etc.
- Waste Basket
- Trash Bags
- Floor Lamp
- Extension Cord
- Laundry Detergent
- Fabric Softener

STORAGE

- Laundry Basket
- Storage Cubes
- Over-The-Door Organizer
- Under-Bed Storage
- Closet Organizers
- Hangers
- Shoe Rack

MISCELLANEOUS

- Broom
- Mop
- Vacuum
- Cleaning Supplies
- Batteries
- Chargers
- Flashlight
- Headphones
- Small Electric Fan
- Power Strip (UL approved with surge protector)
- First Aid Kit
- Tool Kit
- Sewing Kit
- Ear Plugs
- Umbrella
- Rain Boots
- Winter Jacket

Prohibited ITEMS!

- Electric Frying Pan
- Deep Fryer
- Grills
(Charcoal/Electric/Gas/
George Foreman)
- Air Conditioner
- Ceiling Fan
- Candles
- Incense/Potpourri
- Toaster Oven
- Slow Cooker
- Damaged Electrical Items
- Compressed Gas Containers
- Shot Glasses or Other Alcohol
Paraphernalia
- Netting or Parachutes
- Hot Plate

Local Stores & Restaurants

Listed below are stores and restaurants close
to the University of Memphis

SHOPPING LOCATIONS

KROGER

- Grocery, Home-Goods, School Supplies & Hygiene Products

TARGET

- Grocery, Clothing, Bedding, School Supplies, Technology, Hygiene & Home Goods

WALMART

- Grocery, Clothing, Bedding, School Supplies, Technology, Hygiene & Home Goods

WALGREEN'S

- Office Supplies & Hygiene Products

CVS

- Office Supplies & Hygiene Products

OFFICE DEPOT

- School Supplies

SUPERLO FOODS

Food & Grocery

SPROUTS FARMERS MARKET

- Grocery & Hygiene Products

OFF-CAMPUS DINING

FAST FOOD

- Taco Bell
- McDonald's
- Cook Out
- American Deli
- Krystal
- Burger King
- Subway
- Checkers

RESTAURANTS

- Brother Juniper's
- RP Tracks
- The Bluff
- Huey's
- Newby's
- Sam's Deli
- Las Delicias Mexican Bar & Grill
- Ubee's
- Happy Greek Cafe'
- Garibaldi's Pizza
- Moe's Southwest Grill

COFFEE

- Belltower Coffeehouse
- French Truck Coffee
- Otherlands Coffee Bar
- Tenn Tea
- Starbucks

INTERNATIONAL GROCERY STORES

MEDITERRANEAN GROCERY

- Mediterranean and Russian Food & Grocery

BALAJI SUPERMARKET

- Indian Grocery Store

CORDOVA FARMER'S MARKET INTERNATIONAL

- Asian and Hispanic Food & Grocery



CAMPUS RESOURCES



SAFETY & SECURITY

- **Emergency Phone : 901.678.4357**
 - This number should be used in the event of a severe emergency and will contact Police Services at the UofM.
- **Non-Emergency Phone :**
901.678.3838
 - This number should be used in the event of a non-emergency and will contact Police Services at the UofM.
- **LiveSafe App**
 - University of Memphis' Free Safety Mobile App
 - Available for IOS and Android

TIGER ESCORT SERVICES

Tiger Escort is a personal escort program staffed by students to enhance the safety of persons on campus in the evening.

There is no need to walk alone, and we heavily encourage use of Tiger Escort if you aren't walking in a group.

- Normal hours for fall and spring semesters are 6–11 p.m., 7 days a week
- To request an escort | 901.678.4663 (678.HOME)
- After 11 p.m., Police Services assists based on availability.

COUNSELING RESOURCES



- The University of Memphis Counseling Center provides confidential and therapy services free of charge for individual, group, and couples/partner/family to students currently enrolled in at least 6 credit hours or 1 credit hour for the summer.
- Psychiatric services are available to uninsured students who are engaged in therapy services.
- Testing for learning disability, ADHD, personality and other psychodiagnostic assessments are available for a small fee.

In addition to therapy services, the center also offers prevention, outreach, and engagement programming to the campus community.

- Open Monday-Friday | 8 a.m.– 4:30 p.m.
- Virtual Sessions Available
- In-Person Sessions | Wilder Tower 214
- Phone | 901.678.2068



CAMPUS RESOURCES



TIGER PANTRY

The Tiger Pantry was created to help feed all students on campus who may struggle with food insecurities and finances. The pantry carries food items (perishable and non-perishable), basic household items, basic toiletries, and feminine products.

- Due to high traffic and limited supply, students are allowed to visit the pantry only ONE time every seven days.
- Open Mondays and Wednesdays from 9 a.m.-3 p.m., and Fridays from 9 a.m.-1 p.m.



DISABILITY RESOURCES

- Students who wish to register with Disability Resources for Students (DRS), can at 110 Wilder Tower.
- Students will self-identify by completing a student application, submitting documentation of disability, and participating in an initial appointment with a DRS Coordinator.
- Initial appointment occurs after student completes the DRS Student Information Form and submits disability-related documentation to the DRS office.
- Forms can be found on the DRS website.

memphis.edu/drs/disabilitysvcs/getstarted.php

CAMPUS RESOURCES



STUDENT HEALTH CENTER

The University of Memphis Student Health Center provides students with both in-person and telehealth/phone visits. Appointments can be made using the MyPatient Portal in your myMemphis account.

For information regarding required immunizations, click the following link:
memphis.edu/health/immunization/index.php



THE BLUELINE

CAMPUS TRANSPORTATION

University of Memphis shuttle that drives to and from campus year-round. This shuttle drives to and from Target and Kroger for Fall and Spring semesters.

- TransLoc: Mobile App that can be used to track shuttle.
- Live Bus Tracker can be downloaded using this link: transloc.com/app/?tab=routes



R. BRAD MARTIN STUDENT WELLNESS CENTER

- Fitness facility with cardio machines, weight equipment, an outdoor leisure pool, plus basketball and tennis courts.
- Four large fitness studios offer fitness classes, high intensity interval training, Zumba, kickboxing, yoga and more.
- Tiger Café serves healthy snacks and smoothies inside the center.
- Tiger Food Lab, also inside the center, hosts several events throughout the year!

TIGERLINK

- To apply for a job, complete an application using this link:
memphis.edu/careerservices/tigerlink.php
- UofM Student Employment positions can be filtered under the “Jobs” tab by clicking “On Campus Student Employment”.
- Must be a current F-1 student maintaining legal F-1 status and pursuing a full course of study
 - 9 credit hours for graduate students
 - 12 credit hours for undergraduates during the fall and spring semesters.
- Work does not have to be related to course of study.
- On-campus work is limited to 20 hours per work week while school is in session.
- Government required forms for international student employees once hired.
- To receive a social security number, use the following link to get a letter of support from the ISS office:
apply.memphis.edu/manage/login?realm=&r=/register/?id=ccd6ee25-ba54-4d11-a8d5-15a443a058e4

REQUIRED GOV'T FORMS

- Form I-94
- Social Security Card
 - Completed by the hiring department and given to the student to take with them to the Office of Social Security.
- Proof of Employment
 - Social Security Work Verification Letter.
- Form I-9
 - All employees must file a properly completed Form I-9 in Shared Services Center located in the Administration Building, Room 192, prior to the first day of work.
- Form W-4
 - Students will be required to complete their payroll direct deposit forms and their Form W-4 at the Finance office.

CONTACT US
901.678.2295



LOCATIONS TO VISIT



ART MUSEUM OF THE UNIVERSITY OF MEMPHIS

- Art Museum that features collections of Egyptian, West African & Contemporary Art

STAX MUSEUM OF AMERICAN SOUL MUSIC

- Museum with Interactive Exhibits, Videos, Musical Instruments & Much More About the Origins of Soul Music

NATIONAL CIVIL RIGHTS MUSEUM

- A Complex of Buildings & Museums that Trace the History of the Civil Rights Movement in Memphis and Beyo



MEMPHIS ZOO

- Zoo with over 3,500 Animals Representing over 500 Different Species

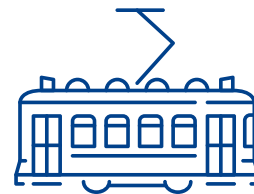


MEMPHIS BOTANIC GARDEN

- A 96-Acre Botanical Garden with Beautiful Outdoor Exhibits & Sculptures.

DIXON GALLERY & GARDENS

- Free Art Museum & Public Gardens



SOUTH MAIN TROLLEY NIGHTS

- Memphis' South Main Arts District Hosts an Evening of Art & Music the Last Friday Each Month. Hop Aboard the Vintage Trolley for Only \$1 a Ride



CROSTOWN CONCOURSE

- Restaurants, Art Galleries & Shops

ADDITIONAL RESOURCES



OPENING A BANK ACCOUNT

- Go to any bank in the city of Memphis (Bank of America, Regions, First Horizon)
- General requirements for opening an account:
 - Name, address, phone number
 - Two forms of government-issued ID, such as a valid driver's license or passport
 - Social Security Number
 - To get this number, complete IRS Form W-7, IRS Application for Individual Taxpayer Identification Number
 - Utility bill with current address
 - Cash deposit (Normally \$25 to \$100)
 - You will need a letter of support from the ISS office. Click this link to request a letter of support: apply.memphis.edu/manage/login?realm=&r=/register/?id=ccd6ee25-ba54-4d11-a8d5-15a443a058e4



LOCAL TRANSPORTATION: MATA

- MATA is a city-wide public bus transportation system.
- Mobile App called GO901 Mobile can be used to buy tickets and see bus routes.



CELL PHONE USAGE

- If you plan on using a cell phone in Memphis, you can buy a pre-paid phone package or temporary Sim Card for your current phone.
- These can be purchased at T-Mobile, Verizon or AT&T.



CONTACT INFORMATION

INTERNATIONAL STUDENT SERVICES

901.678.5918

theworld@memphis.edu

HOUSING AND RESIDENCE LIFE

901.678.2295

internationalhousing@memphis.edu

YUGO MEMPHIS SOUTHERN

901.350.7073 (TEXT ONLY)

memphisouthern@yugo.com

WHO DO I CONTACT?

Not sure who to contact about an issue? Look below to find out!

HOUSING AND RESIDENCE LIFE

- Room Change Requests
- Questions About Billing

YUGO MEMPHIS SOUTHERN

- Maintenance Requests
- Key Issues
- Facility Problems



The University of Memphis is an Equal Opportunity/Affirmative Action University.
It is committed to the education of a non-racially identifiable student body. FY2223-UOM394/5C