



International Student Housing Guide





YOUR HOME AWAY FROM HOME



ABOUT INTERNATIONAL STUDENT HOUSING

Welcome to Housing and Residence Life at the University of Memphis! We are thrilled you have decided to join our Tiger family. Please use this guide as a reference as you prepare for your arrival to the university and while living with us.

WHY CHOOSE US

Finding a place to live while you attend the University of Memphis may seem difficult, but Housing and Residence Life is here to help you find your home away from home. Living on or near campus is a great way to meet people and become an active member on campus and in the Memphis community. It is our priority to provide you with resources and accommodations that promote your academic, personal and professional success while at the University of Memphis.



BEFORE YOU ARRIVE

Checklist

COMPLETE HOUSING APPLICATION

- The housing application typically opens on February 1st each year.
- You must have applied for admission to the University of Memphis and received your University Identification Number in order to apply for housing (ex: U00123456).
- Before completing your housing application, be sure to thoroughly review the types of housing options offered for international students. Undergraduate students may typically choose from the traditional housing options, while graduate students may apply for housing at Yugo Memphis Southern or Graduate/Student Family Housing (GSFH). Visit memphis.edu/reslife/international/index.php to learn more.
- Complete the online application form by visiting myMemphis > Student Pages > My Resources tab. From there, go to Housing and Residence Life > Housing Application Portal. Select, "Application," and choose the appropriate semester. Follow the steps through the portal to complete the application in its entirety. Select, "International Graduate Housing" to apply for housing at Yugo, "Graduate Housing" or "Family Housing" to apply for GSFH, and "Regular Student Housing" to apply for the traditional residence halls.
- If you are interested in rooming with specific people, be sure to include a roommate preference when completing your application, and list their information on your application. Please know that selecting a roommate does not guarantee you will live with them but will help Housing and Residence Life when making room assignments.
- After the application has been submitted, you will receive a confirmation email to your UofM email address.
- If you complete a housing application and are assigned a space, this space cannot be subleased to other students or individuals. Cancellation fees apply.

REVIEW HOUSING POLICIES AND STUDENT CODE OF CONDUCT

- Before arriving to and living on campus, be sure to read the University of Memphis Housing Policies and the Student Code of Conduct. Reviewing these policies will prepare you for your arrival to campus so that you are aware of the requirements of being both a resident and student at the University of Memphis. The Housing Policies are available on the Housing and Residence Life website under the Resident Resources tab using this link: memphis.edu/reslife/resources/index.php. The Student Code of Conduct can be accessed using this link: memphis.edu/osa/students/code-of-rights.php.

CHECK YOUR UNIVERSITY EMAIL FOR ROOM ASSIGNMENTS

- Initial housing assignments are typically emailed to your University email account on June 1st. Once you receive this email, the timeframe to cancel your application without penalty will be specified in the notification.
- Over the course of the summer, as additional housing applications are submitted, you will receive an email with your housing assignment within a few weeks. Please allow for processing time.

BEFORE YOU ARRIVE

Checklist

COMPLETE PAPERWORK

- Visit the U.S. Department of State for a step-by-step guide on applying for an F-1 visa (I-20). You may also contact the U.S. consulate office in your home country for information about applying for a U.S. visa. Visit usembassy.gov/. Note that a SEVIS fee is required when a new I-20 is issued with a new SEVIS number. This is required paperwork. Visit ice.gov/sevis/i901.
- Visit this link for more information about the required forms needed before your arrival in Memphis: memphis.edu/iss/forms.php.
- Although not required by the university, we highly encourage you to purchase renters' insurance prior to your arrival. Renters' insurance covers losses and damages to personal property and provides liability coverage if someone is injured in your housing space. It is inexpensive, typically only costing approximately \$15-\$30 per month. As part of your housing application, we offer a renters' insurance plan through a third party called Grad Guard. If you have chosen to decline this coverage, you may return to the housing application and accept the plan if you choose.

RESEARCH TYPES OF TRANSPORTATION

- Transportation in the United States is primarily automobile-based. If you plan to drive a car while you are here, you can get a Tennessee driver license by getting a letter of support from the International Student Services office. Visit this link for the letter request form: apply.memphis.edu/register/?id=ccd6ee25-ba54-4d11-a8d5-15a443a058e4
- Depending on your personal preference and available travel plans, you may travel to Memphis via:
 - Memphis International Airport (MEM)
 - Amtrak Train Station
 - Greyhound Bus Station
 - Driving from another city

Inform the International Student Services (ISS) office of your plans by emailing theworld@memphis.edu, and they will arrange a volunteer to transport you to the UofM Main Campus, where they will help you get your campus ID and check into your housing assignment. Be sure to include the date, time, and location of your arrival in the email.

FAMILIARIZE YOURSELF WITH THE UNIVERSITY BILLING PROCESS

- All charges will be made to your TigerXpress via your myMemphis account. To see these charges, go to myMemphis > Student Pages > My Finances tab.
- Payment plans can be set up in your TigerXpress account to help pay for tuition, housing costs and other charges.
- Concerns regarding billing and charges should be communicated to the University & Student Business Services (USBS) before arriving to campus. You may email usbs@memphis.edu for assistance.

APPLY FOR INTERNATIONAL STUDENT SCHOLARSHIPS

- The University selectively awards competitive merit-based scholarships for newly admitted degree-seeking international students on a J-1 or F-1 visa taking classes on campus. Scholarships can be found through Tiger Scholarship Manager at memphis.academicworks.com

UNDERGRADUATE HOUSING OPTIONS

TRADITIONAL RESIDENCE HALLS

The University of Memphis has six (6) traditional-style residence halls, including five (5) options on our main campus and one at our Lambuth Campus. Be sure to check out our website at memphis.edu/reslife/reshalls/index.php to learn more about each specific residence hall.

RAWLS HALL



SMTH HALL



SOUTH HALL



LIVING LEARNING COMPLEX (LLC)



CENTENNIAL PLACE



CARNEY-JOHNSTON (LAMBUTH)

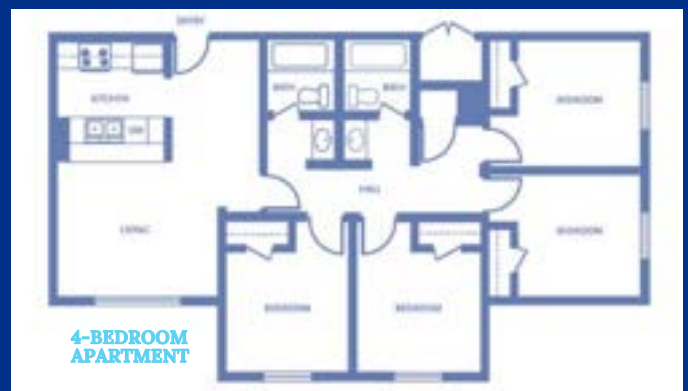


UNDERGRADUATE HOUSING OPTIONS

APARTMENT-STYLE RESIDENCE HALLS

In addition to the traditional residence halls, we offer apartment and townhouse style accommodations for upperclassmen students on our main campus. Visit memphis.edu/reslife/reshalls/index.php to learn more about these options.

CARPENTER COMPLEX



Available Floor Plans: 4-BR Apartment | 5-BR Townhouse | 8-BR Townhouse | 9-BR Townhouse

PARK AVE APARTMENTS AND TOWNHOMES



Available Floor Plans: 2-BR Flat | 2-BR Townhouse - Choice of Small or Large Bedroom

GRADUATE HOUSING OPTIONS

GRADUATE STUDENT AND FAMILY HOUSING

Graduate Student and Family Housing (GSFH) is located on the University of Memphis South Campus on Park Avenue, approximately one mile from the main campus. The residents are comprised of students, spouses, and students' children. It is a community different from a typical apartment complex in that most residents are parents and students, and many work full or part-time jobs. Choose from a 1-bedroom or 2-bedroom townhouse or 2-bedroom flat (apartment). There is also a community center with included laundry units, vending machines, and a swimming pool and playground. Internet and utilities* are provided.

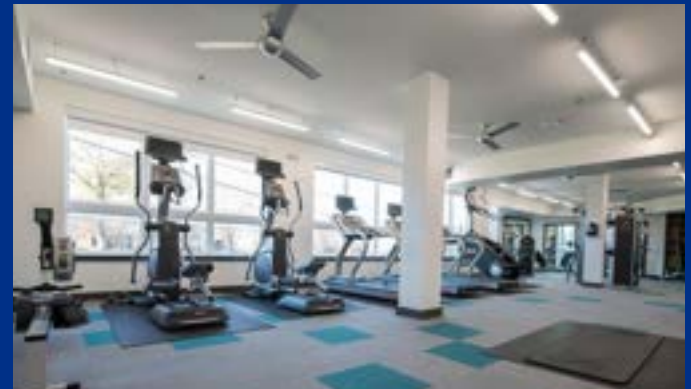
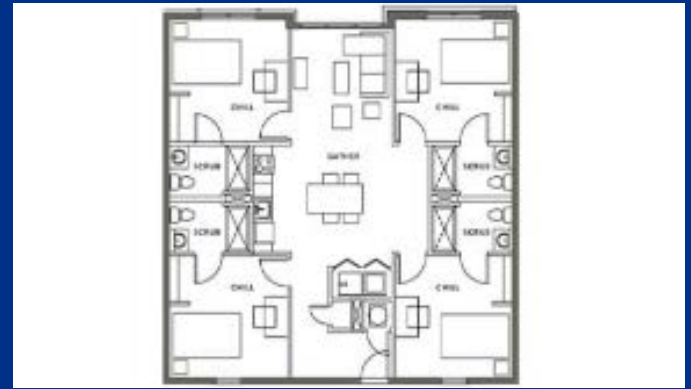


Rates include utilities up to \$100 monthly cap for 1-bedroom units and up to \$150 monthly cap for 2-bedroom units. Overages will be billed to your student account.

GRADUATE HOUSING OPTIONS

YUGO MEMPHIS SOUTHERN

The University of Memphis has partnered with Yugo Memphis Southern to provide individuals with a bed space in an apartment with a 4-bedroom, 4-bathroom layout that shares a living room with a flat-screen HDTV, kitchen, and in-unit laundry. Internet and utilities are included. Yugo also provides public and private study lounges, fitness center, theater, lounge, and community pool.



For more information about Yugo, visit gathersouthern.com

The contract for Yugo Memphis Southern included in your housing application is for the entire academic year, including the Fall, Spring and Summer terms (August - July). Students graduating in December or staying only for the Fall semester for approved circumstances can be released from contract without penalty.

Suggested ITEMS

Below, you can find a recommended list of items you may need during your time at the University of Memphis. Refer to the Shopping and Eating Locations on the next page to see where these items can be purchased once you arrive to Memphis.

BEDROOM

- Bed Sheets
- Pillows & Pillowcases
- Mattress Pad
- Comforter
- Extra Blanket

BATHROOM

- Area Rug
- Towels (bath, hand, washcloths)
- Bathmat/rug (suite bathrooms only)
- Shower Caddy
- Loofah
- Robe
- Toiletries
- Soap Holder

KITCHEN

- Dinnerware
- Utensils
- Drinkware
- Cookware
- Plastic Containers
- Plastic Storage Bags
- Kitchen Tools
- Can Opener
- Drying Rack
- Dish Towels
- Paper Towels
- Dish Soap
- Chip Clips
- Coffeemaker (w/o Burner)

STUDY ITEMS

- Laptop
- Flash Drive
- Backpack
- Pens & Pencils
- Highlighters
- Notebooks
- Printer Paper
- Desk Lamp
- Stapler
- Binder Clips
- Bulletin Board
- Dry Erase Board
- Calendar

LIVING ROOM

- Area Rug
- Picture Frames
- Door Mirror
- Throw Pillows
- Curtains
- Curtain Rod
- Posters
- Command Strips
- Television
- TV Stand
- Alarm Clock
- Iron (w/ Auto Shutoff)
- Hair Dryer, Curling Iron, Etc.
- Waste Basket
- Trash Bags
- Floor Lamp
- Extension Cord
- Laundry Detergent
- Fabric Softener

STORAGE

- Laundry Basket
- Storage Cubes
- Over-The-Door Organizer
- Under-Bed Storage
- Closet Organizers
- Hangers
- Shoe Rack

MISCELLANEOUS

- Broom
- Mop
- Vacuum
- Cleaning Supplies
- Batteries
- Chargers
- Flashlight
- Headphones
- Small Electric Fan
- Power Strip (UL approved with surge protector)
- First Aid Kit
- Tool Kit
- Sewing Kit
- Ear Plugs
- Umbrella
- Rain Boots
- Winter Jacket

Prohibited ITEMS!

- Electric Frying Pan
- Deep Fryer or Air Fryer
- Grills (Charcoal/Electric/Gas/George Foreman)
- Air Conditioner
- Ceiling Fan
- Candles
- Incense/Potpourri
- Toaster Oven
- Slow Cooker
- Damaged Electrical Items
- Compressed Gas Containers
- Shot Glasses or Other Alcohol Paraphernalia
- Netting or Parachutes
- Hot Plate

Local Stores & Restaurants

Listed below are stores and restaurants close
to the University of Memphis

SHOPPING LOCATIONS

KROGER

- Grocery, Home-Goods, School Supplies & Hygiene Products

TARGET

- Grocery, Clothing, Bedding, School Supplies, Technology, Hygiene & Home Goods

WALMART

- Grocery, Clothing, Bedding, School Supplies, Technology, Hygiene & Home Goods

WALGREEN'S

- Office Supplies & Hygiene Products

CVS

- Office Supplies & Hygiene Products

OFFICE DEPOT

- School Supplies

SUPERLO FOODS

- Food & Grocery

SPROUTS FARMERS MARKET

- Grocery & Hygiene Products

OFF-CAMPUS DINING

FAST FOOD

- Taco Bell
- McDonald's
- Cook Out
- American Deli
- Krystal
- Burger King
- Subway
- Checkers

RESTAURANTS

- Brother Juniper's
- RP Tracks
- The Bluff
- Huey's
- Newby's
- Sam's Deli
- Las Delicias Mexican Bar & Grill
- Ubee's
- Happy Greek Cafe'
- Garibaldi's Pizza
- Moe's Southwest Grill

COFFEE

- Belltower Coffeehouse
- French Truck Coffee
- Otherlands Coffee Bar
- Tenn Tea
- Starbucks

INTERNATIONAL GROCERY STORES

MEDITERRANEAN GROCERY

- Mediterranean and Russian Food & Grocery

BALAJI SUPERMARKET

- Indian Grocery Store

CORDOVA FARMER'S MARKET INTERNATIONAL

- Asian and Hispanic Food & Grocery

CAMPUS RESOURCES



SAFETY & SECURITY

- **Emergency Phone : 901.678.HELP (4357)**
 - This number should be used in the event of a severe emergency and will contact Police Services at the UofM.
- **Non-Emergency Phone : 901.678.3848**
 - This number should be used in the event of a non-emergency and will contact Police Services at the UofM.
- **LiveSafe App**
 - University of Memphis' Free Safety Mobile App
 - Available for IOS and Android

TIGER ESCORT SERVICES

Tiger Escort is a personal escort program staffed by students to enhance the safety of persons on campus in the evening. We heavily encourage use of Tiger Escort if you aren't walking in a group.

- Normal hours for fall and spring semesters are 6–11 p.m., 7 days a week
- To request an escort | 901.678.HOME (4663)
- After 11 p.m., Police Services assists based on availability.

COUNSELING RESOURCES



- The University of Memphis Counseling Center provides confidential and therapy services free of charge for individual, group, and couples/partner/family to students currently enrolled in at least 6 credit hours or 1 credit hour for the summer.
- Psychiatric services are available to uninsured students who are engaged in therapy services.
- Testing for learning disability, ADHD, personality and other psychodiagnostic assessments are available for a small fee.

In addition to therapy services, the center also offers prevention, outreach, and engagement programming to the campus community.

- Open Monday-Friday | 8 a.m.– 4:30 p.m.
- Virtual Sessions Available
- In-Person Sessions | Wilder Tower 214
- Phone | 901.678.2068

CAMPUS RESOURCES



TIGER PANTRY

The Tiger Pantry was created to help feed all students on campus who may struggle with food insecurities and finances. The pantry carries food items (perishable and non-perishable), basic household items, basic toiletries, and feminine products.

- Due to high traffic and limited supply, students are allowed to visit the pantry only ONE time every seven days.
- Open Mondays and Wednesdays from 9 a.m.-3 p.m., and Fridays from 9 a.m.-1 p.m.



DISABILITY RESOURCES

- Students who wish to register with Disability Resources for Students (DRS), can at 110 Wilder Tower.
- Students will self-identify by completing a student application, submitting documentation of disability, and participating in an initial appointment with a DRS Coordinator.
- Initial appointment occurs after student completes the DRS Student Information Form and submits disability-related documentation to the DRS office.
- Forms can be found on the DRS website.
memphis.edu/drs/disabilitysvcs/getstarted.php



CAMPUS RESOURCES



STUDENT HEALTH CENTER

The University of Memphis Student Health Center provides students with both in-person and telehealth/phone visits. Appointments can be made using the MyPatient Portal in your myMemphis account.

For information regarding required immunizations, click the following link:
memphis.edu/health/immunization/index.php



THE BLUELINE

CAMPUS TRANSPORTATION

University of Memphis shuttle that drives to and from campus year-round. This shuttle drives to and from Target and Kroger for Fall and Spring semesters.

- Check out the [Parking and Transportation Services](#) website for information about the Blue Line mobile app.



R. BRAD MARTIN STUDENT WELLNESS CENTER

- Fitness facility with cardio machines, weight equipment, an outdoor leisure pool, plus basketball and tennis courts.
- Four large fitness studios offer fitness classes, high intensity interval training, Zumba, kickboxing, yoga and more.
- Tiger Café serves healthy snacks and smoothies inside the center.
- Tiger Food Lab, also inside the center, hosts several events throughout the year!

TIGERLINK

- To apply for a job, complete an application using this link:
memphis.edu/careerservices/tigerlink.php
- UofM Student Employment positions can be filtered under the “Jobs” tab by clicking “On Campus Student Employment”.
- Must be a current F-1 student maintaining legal F-1 status and pursuing a full course of study
 - 9 credit hours for graduate students
 - 12 credit hours for undergraduates during the fall and spring semesters.
- Work does not have to be related to course of study.
- On-campus work is limited to 20 hours per work week while school is in session.
- Government required forms for international student employees once hired.
- To receive a social security number, use the following link to get a letter of support from the ISS office:
apply.memphis.edu/manage/login?realm=&r=/register/?id=ccd6ee25-ba54-4d11-a8d5-15a443a058e4

REQUIRED GOV'T FORMS

- Form I-94
- Social Security Card
 - Completed by the hiring department and given to the student to take with them to the Office of Social Security.
- Proof of Employment
 - Social Security Work Verification Letter.
- Form I-9
 - All employees must file a properly completed Form I-9 in Shared Services Center located in the Administration Building, Room 192, prior to the first day of work.
- Form W-4
 - Students will be required to complete their payroll direct deposit forms and their Form W-4 at the Finance office.

LOCATIONS TO VISIT



ART MUSEUM OF THE UNIVERSITY OF MEMPHIS

- Art Museum that Features Collections of Egyptian, West African & Contemporary Art

NATIONAL CIVIL RIGHTS MUSEUM

- Complex of Buildings & Museums that Trace the History of the Civil Rights Movement in Memphis and Beyond

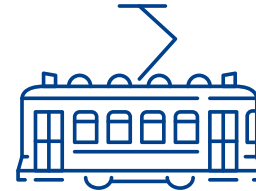
STAX MUSEUM OF AMERICAN SOUL MUSIC

- Museum with Interactive Exhibits, Videos, Musical Instruments & Much More About the Origins of Soul Music



MEMPHIS ZOO

- Zoo with Over 3,500 Animals Representing Over 500 Different Species



SOUTH MAIN TROLLEY NIGHTS

- Memphis' South Main Arts District Hosts an Evening of Art & Music the Last Friday Each Month. Hop Aboard the Vintage Trolley for Only \$1 a Ride



DIXON GALLERY & GARDENS

- Free Art Museum & Public Gardens

MEMPHIS BOTANIC GARDEN

- A 96-Acre Botanical Garden with Beautiful Outdoor Exhibits & Sculptures.



CROSTOWN CONCOURSE

- Restaurants, Art Galleries & Shops

ADDITIONAL RESOURCES



OPENING A BANK ACCOUNT

Go to any bank in the city of Memphis (Bank of America, Regions, First Horizon)

- General requirements for opening an account:
 - Name, address, phone number
 - Two forms of government-issued ID, such as a valid driver's license or passport
 - Social Security Number
 - To get this number, complete IRS Form W-7, IRS Application for Individual Taxpayer Identification Number
 - Utility bill with current address
 - Cash deposit (Normally \$25 to \$100)
 - You will need a letter of support from the ISS office. Click this link to request a letter of support: apply.memphis.edu/manage/login?realm=&r=/register/?id=ccd6ee25-ba54-4d11-a8d5-15a443a058e4



LOCAL TRANSPORTATION: MATA

- MATA is a city-wide public bus transportation system.
- Mobile App called GO901 Mobile can be used to buy tickets and see bus routes.



CELL PHONE USAGE

- If you plan on using a cell phone in Memphis, you can buy a pre-paid phone package or temporary Sim Card for your current phone.
- These can be purchased at T-Mobile, Verizon or AT&T.



CONTACT INFORMATION

INTERNATIONAL STUDENT SERVICES

+1 901.678.5918

memphis.edu/iss

theworld@memphis.edu

HOUSING AND RESIDENCE LIFE

+1 901.678.2295

memphis.edu/reslife/international/index.php

internationalhousing@memphis.edu

YUGO MEMPHIS SOUTHERN

+1 901.458.5580

gathersouthern.com

memphisouthern@yugo.com

UNIVERSITY & STUDENT BUSINESS SERVICES

+1 901.678.2712

memphis.edu/usbs

usbs@memphis.edu



The University of Memphis is an Equal Opportunity/Affirmative Action University.
It is committed to the education of a non-racially identifiable student body. FY2223-UOM394/5C