

Advocacy • Employability • Independence

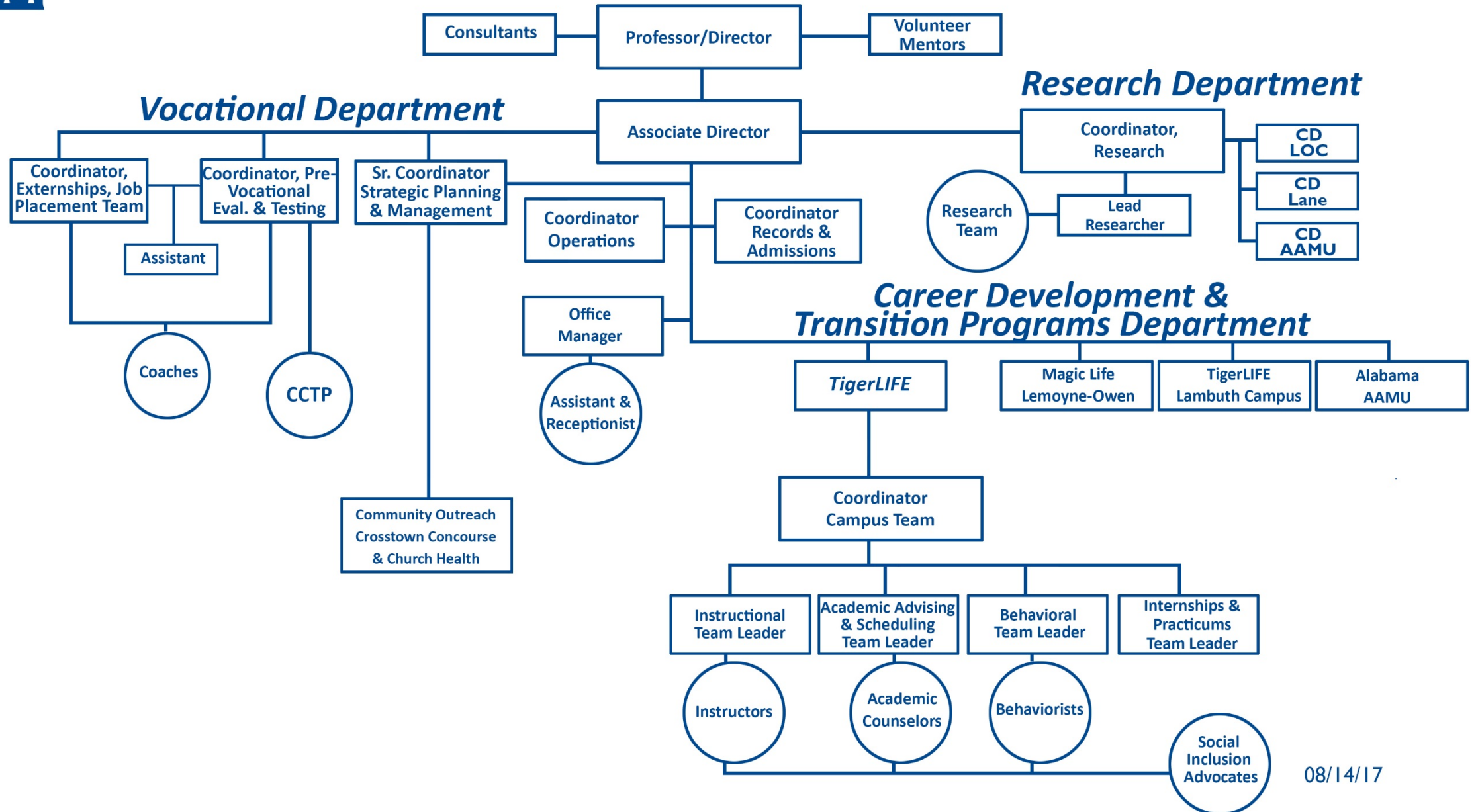
Welcome to the University of Memphis Institute on Disability



- Research Department
- Vocational Department
 - Pre-Employment Transition Services
- Career Development & Transition Programs Department
 - TigerLIFE @ University of Memphis
 - TigerLIFE @ U of M Lambuth (2018)
 - MagicLIFE @ Lemoyne-Owen (2018)
 - Alabama AAMU (2018)

Advocacy • Employability • Independence

University of Memphis Institute on Disability (UMID)



UMID Pre-Employment Transition Services

Targets high school juniors and seniors with intellectual disabilities

- Job exploration counseling
- Work-based learning experiences
- Workplace readiness training
- Counseling on postsecondary educational & training opportunities
- Job site shadowing



University of Memphis Institute on Disability
Pre-employment Transition Services

The University of Memphis Institute on Disability (UMID) offers Pre-employment Transition Services to high school students with disabilities. These services are offered September through May during the school year at the student's school as well as a Summer Institute during June and July on the University of Memphis campus.

Students who participate will receive services at their school and then will be eligible to enroll in the Summer Institute at the University of Memphis. Space is limited so early enrollment secures your spot.

All UMID Pre-employment Transition Services instructors are teaching professionals with years of post-secondary teaching experience.

UMID is a Community Rehabilitation Provider for the Tennessee Department of Human Services. UMID has the experiences and resources to provide high school students the learning and experiential opportunities that will support their efforts to become self-reliant, independent and gainfully employed.

Services offered include:

- Job exploration counseling
- Work based learning experiences
- Workplace readiness training
- Counseling on postsecondary educational & training opportunities
- Job Site Shadowing on the University of Memphis campus

An application for eligible students can be found at: www.memphis.edu/umid/pdfs/preetsapplication.pdf
Print this application, complete it and mail to:
University of Memphis Institute on Disability - Pre-ETS Program
100 Ball Hall - University of Memphis
Memphis, TN 38152

Please contact the UMID office at 901-678-4303 for more information or to request an application.

Advocacy • Employability • Independence

TN Department of Human Services
Pre-Employment Transition Services Interest

Please provide the basic information about the interested student below:

FIRST NAME	LAST NAME	MIDDLE NAME	RACE/ETHNICITY
SOCIAL SECURITY NUMBER	DATE OF BIRTH	GENDER	PHONE NUMBER (Include Area Code)
ADDRESS	Alternate Contact Information:		
Signature			
Date	Printed Name		

Mark Loop

Advocacy • Employability • Independence

Welcome to TigerLIFE



Advocacy • Employability • Independence

Career Development & Transition Program

- Workforce assessment, training and career exploration
- 60 hours (4 semesters)
- Completion Certificate (non-degree program)
- Classroom, campus, community, audit U of M classes
- University activities and events
- On-campus internships
- Community-based externships
- Post-program job placement services



Advocacy • Employability • Independence

TigerLIFE Core Courses

- Workforce Advocacy
- Workforce Learning/Employability
- Functional Life Skills for Independence
- Independent Living for Community Inclusion
- Senior Workforce Training

TigerLIFE Elective Courses

- Social Intervention and Prevention
- Health Advocacy with Lab at Church Health
- Community Exploration with Lab
- Communication for the Workforce
- Math for the Workplace
- Navigating Around Your Community

U of M Audit Courses (examples)

- Physical Education
- History
- Weather and Climate
- Counseling

Internship/Externship Examples

- U of M Physical Plant
- U of M Library
- U of M Bookstore
- Nursing Home
- Marshall's
- Crosstown Concourse Church Health Procurement
- Crosstown Concourse Commercial Kitchen

Advocacy • Employability • Independence

Social Inclusion Opportunities

- Every day on campus and during lunch at the UC or Tiger Den
- Student Organizations & Campus Events
- TigerLIFE Classrooms and Labs
- On-campus Internships
- Community-based Externships
- Best Buddies
- Field Trips



Advocacy • Employability • Independence

Social Inclusion with Advocates & Interns in the Classrooms



- TigerLIFE staff advocates are in the classrooms supporting our students and instructors
- Undergraduate and graduate interns are in the classrooms and serve as peer mentors for our students



Advocacy • Employability • Independence

Our Classrooms



Students practice organizing their school materials & backpacks.

Students work with each other in their classroom activities.



A TigerLIFE class goes to the laundromat as part of their Independent Living for Community Inclusion lab.



Advocacy • Employability • Independence

Health Advocacy Class & Healthy Living Lab with Church Health



- food safety
- healthy recipes
- cooking
- yoga
- weight training
- weight machines

Advocacy • Employability • Independence

Community Exploration Class & Lab



Restaurants



Tourism



Hospitality

Advocacy • Employability • Independence

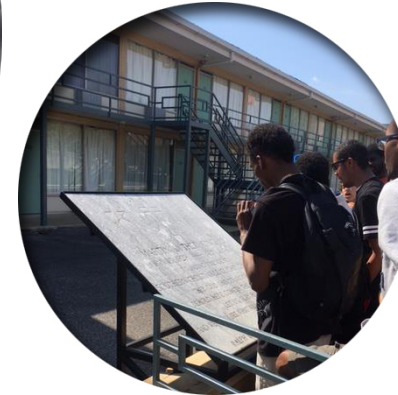
Field Trips



Lichterman Nature Center



Civil Rights Museum



Advocacy • Employability • Independence

Internships (on-campus)

- Physical Plant
- Bookstore
- Library
- Nursing Home
- Day Care
- Offices



Externships (in the community)

- Marshall's Retail
- Church Health Procurement
- Crosstown Concourse Commercial Kitchen
- Warehouse Safety Training
- Forklift Training
- Horticulture



Advocacy • Employability • Independence

**We celebrate with an Award Ceremony upon
program completion.**



Advocacy • Employability • Independence

Post-program Job Placement Support



Examples of Employers

- Marshall's
- Federal Express
- Wal Mart
- Bass Pro Shop
- Nike
- Aramark
- Jesenna Learning Center
- Central Defense
- Shelby County Schools
- Brighton High School
- Harding Academy
- Technicolor
- Graceland
- Panda Express
- Lowe's
- Kroger's
- Sprouts
- Kitchen Bistro
- CC's Pizza
- Mercedes Benz

Types of Jobs

- Warehousing
- Stocking
- Retail / Sales Associate
- Customer Service
- Environmental/Janitorial
- Food Services
- Childcare
- Tourism
- Office / Clerical
- Security
- Courtesy Clerk

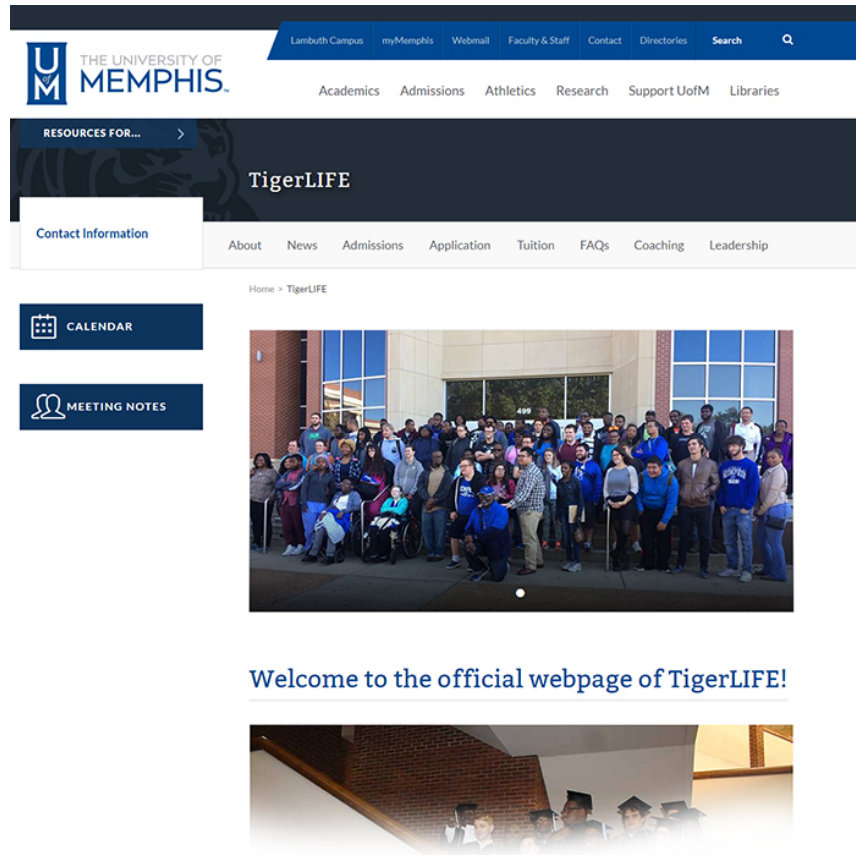
Advocacy • Employability • Independence

Transportation To/From School

- Parent/Guardian
- Carpool with other students
- MATA Plus
- MATA
- Uber
- Private Transportation Services



Advocacy • Employability • Independence



Information and application
can be found on the
TigerLIFE website:

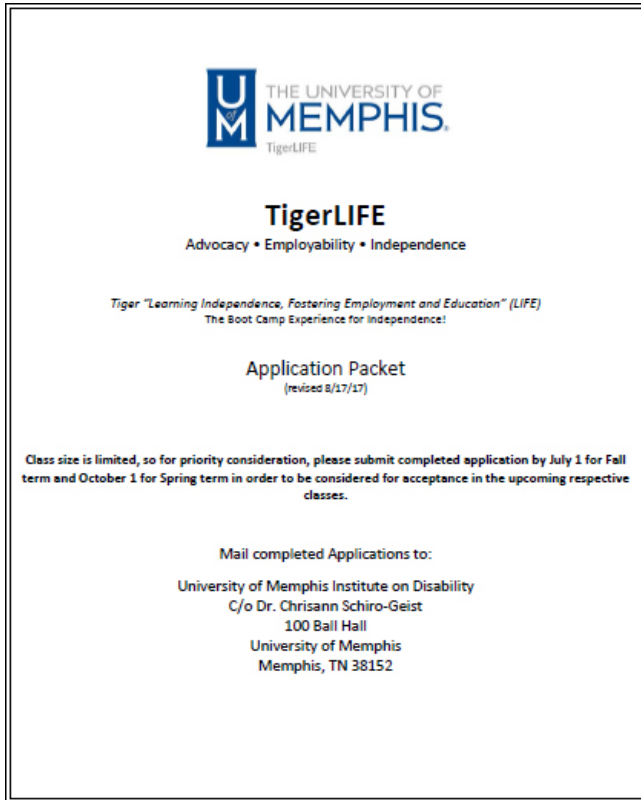
www.memphis.edu/tigerlife

Advocacy • Employability • Independence

Applying to TigerLIFE



- TigerLIFE
- Application fee to the U of M at the Bursar's office
- State issued photo ID
- Meet with Vocational Rehabilitation (VR)
- Will receive a letter from TigerLIFE confirming application and listing documents that must be submitted to complete application process
- Deadlines for completing application process:
 - Jul 1 for fall semester
 - Oct 1 for spring semester
 - April 1 for summer semester



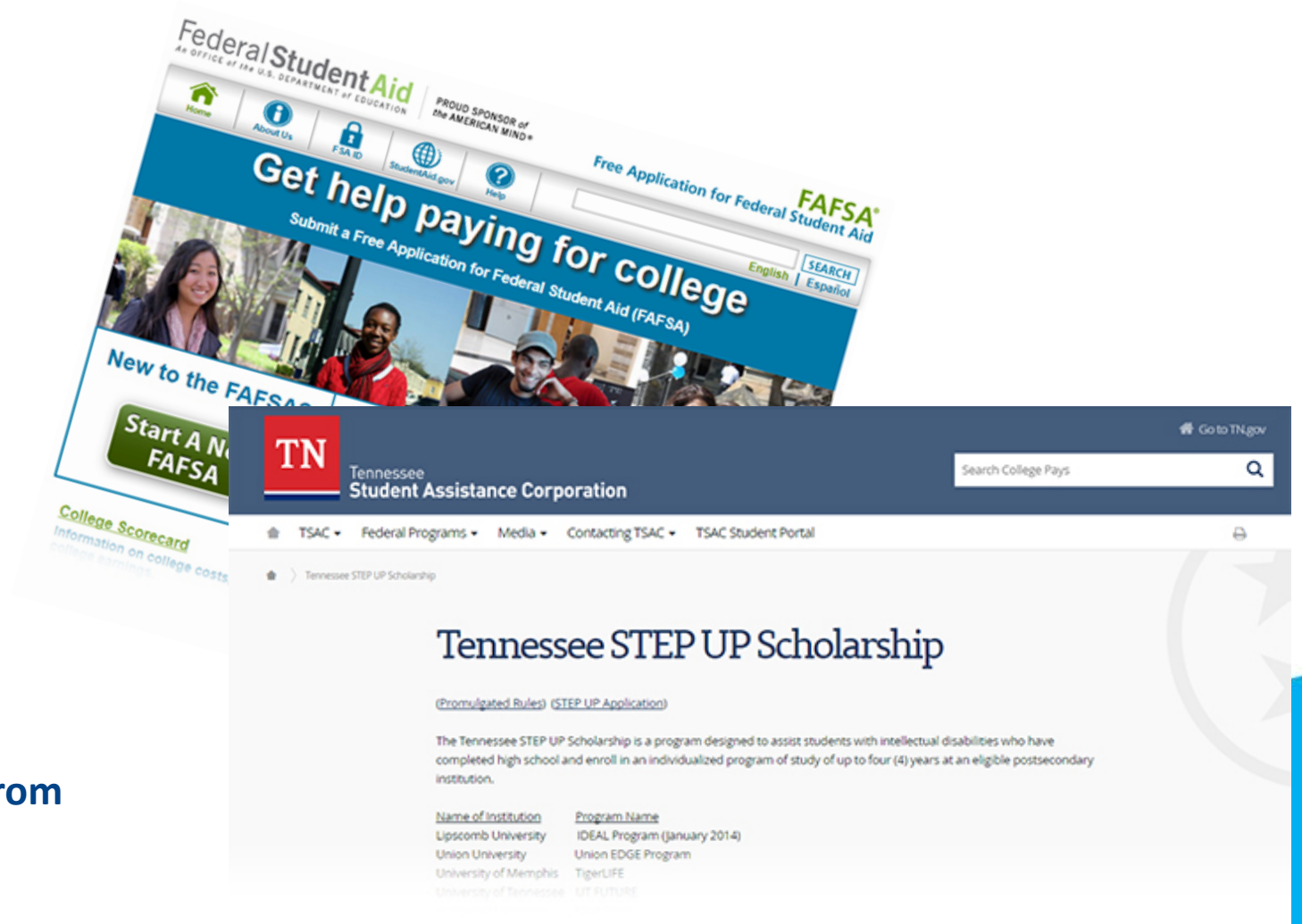
Advocacy • Employability • Independence

Costs

- TigerLIFE courses cost \$275 per hour
- Additional 1 to 4 hours cost for inclusion support
- U of M audit classes cost \$434 per credit hour (includes service fee)

Financial Aid

- Vocational Rehabilitation (VR) eligible
- Step-Up Scholarship (must have graduated from a TN high school within the past 16 months)
- FAFSA (Pell Grant based on financial need as determined by FAFSA)



Advocacy • Employability • Independence

Vocational Rehabilitation Services



- Ms. Jamie Perry is the VR Counselor assigned to incoming TigerLIFE students
- Make an appointment to interview with Ms. Perry when applying to TigerLIFE
- Student must have the desire to go into full-time employment upon program completion
- If determined eligible for VR services, will receive \$2400 per semester for up to 4 semesters to support the student's transition to work

Advocacy • Employability • Independence

Thank you for your interest in TigerLIFE.

Please use the TigerLIFE web pages for additional information:
www.memphis.edu/tigerlife

**And always feel free to call the office
at 901-678-4303 with questions.**

Advocacy • Employability • Independence



**We look forward to you
joining us!**

Advocacy • Employability • Independence