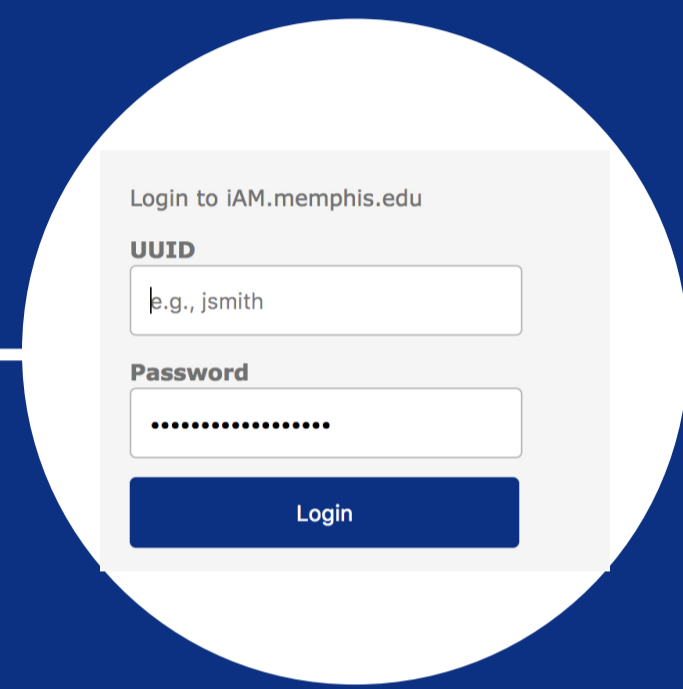


Using Duo Mobile App

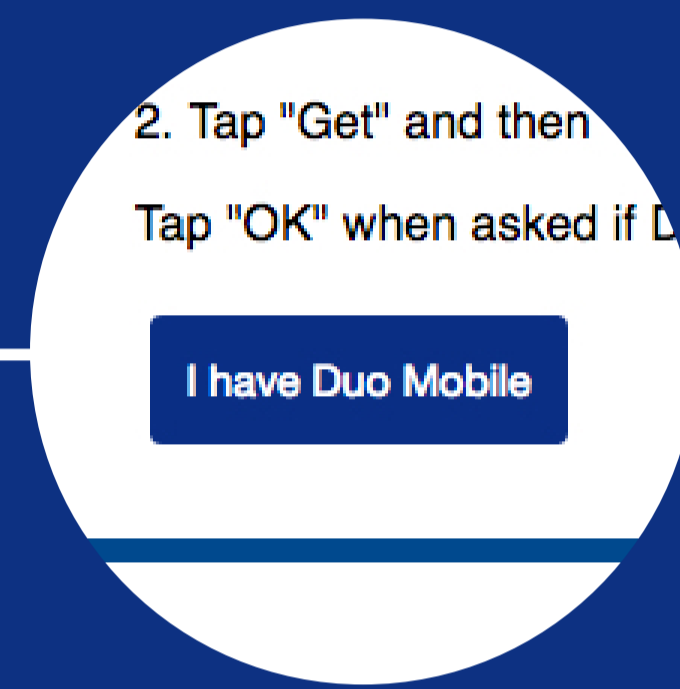
Duo Mobile



Download & install Duo Mobile App on Phone or tablet from Google Play Store or Apple Store.



Log into <https://iam.memphis.edu>



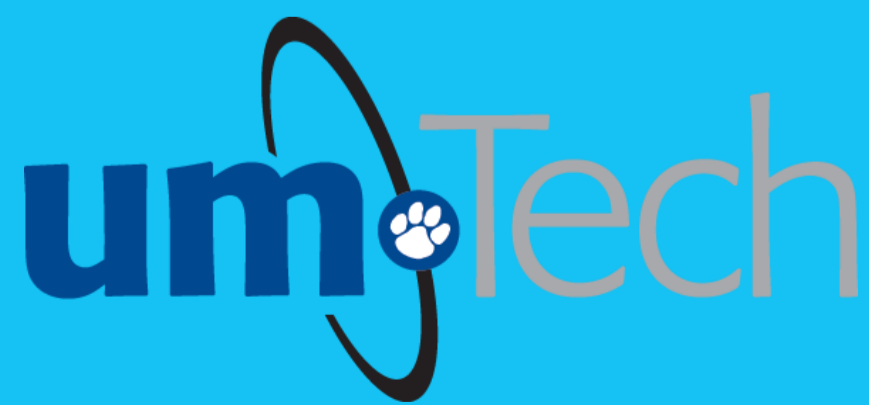
Tap I have Duo Mobile



Launch Duo App. Tap the + button on IOS or add account for Android or tablet then scan QR code

Once the bar code has been scanned, you are ready to use Duo Account Security. For further more detailed instructions see our documentation.

You're Connected!



Information Technology Services