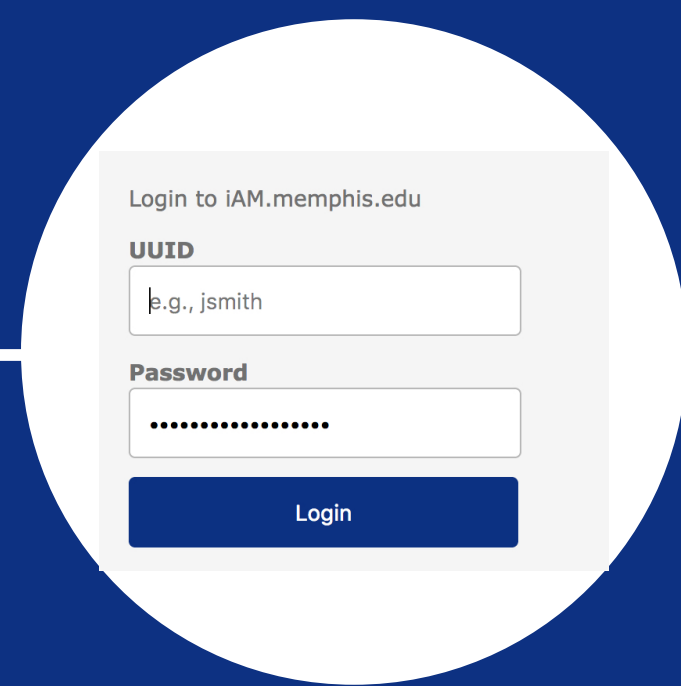


# Using Duo Mobile App

## Duo Mobile

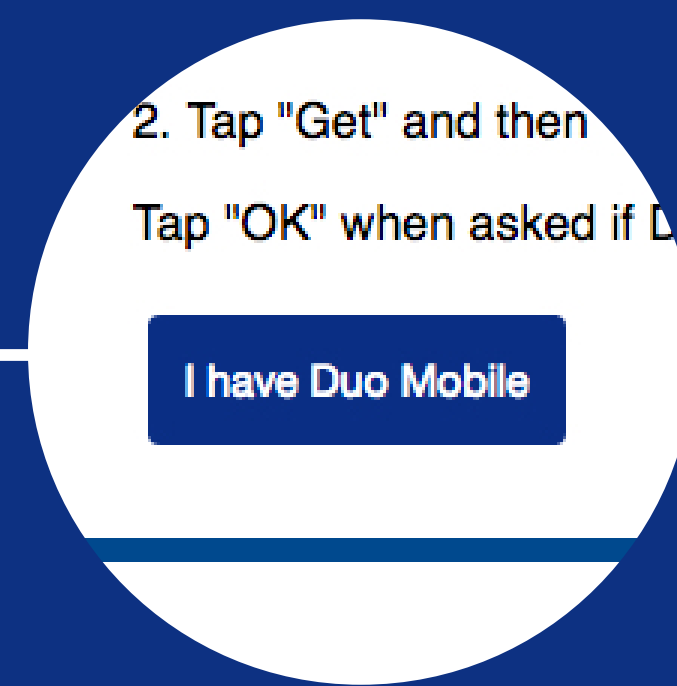


Download & install Duo Mobile App on Phone or tablet from Google Play Store or Apple Store.



**Log into**  
<https://iam.memphis.edu>

*Note: If you cannot log into iAm, you will need to contact the Service Desk for assistance.*



Tap **I have Duo Mobile**

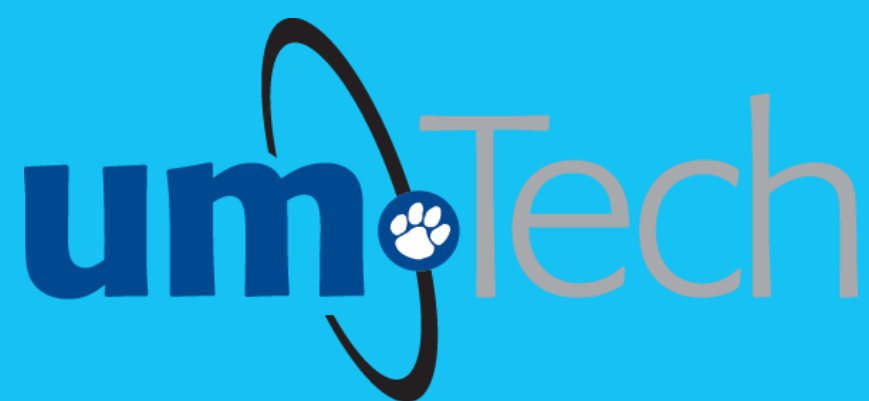


Launch Duo App. Tap the **+ button on IOS** or **Add Account** for Android or tablet then scan QR code

**Once the bar code has been scanned, you are ready to use Duo Account Security.**

[For more detailed instructions, please see our DUO Page.](#)

**You're Connected!**



Information Technology Services