

Connecting on an Android or Tablet

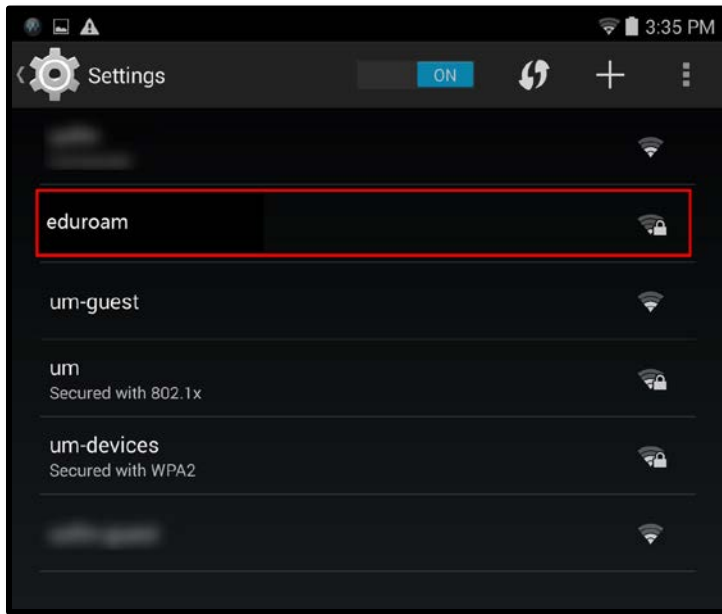
1. Go to your device **Settings**.



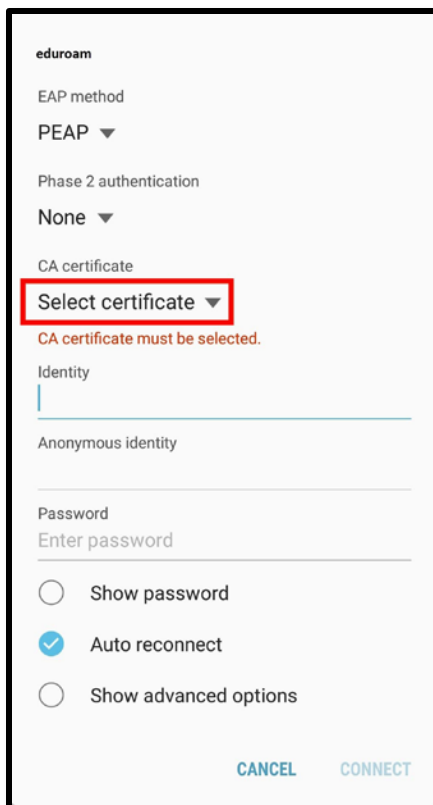
2. Make sure that your **Wi-Fi** has been activated for the device.



3. Select **eduroam** from the wireless networks.



4. Some Android users may have to tell the device not to validate the certificate. From the CA certificate menu **Select certificate** from the drop-down menu.

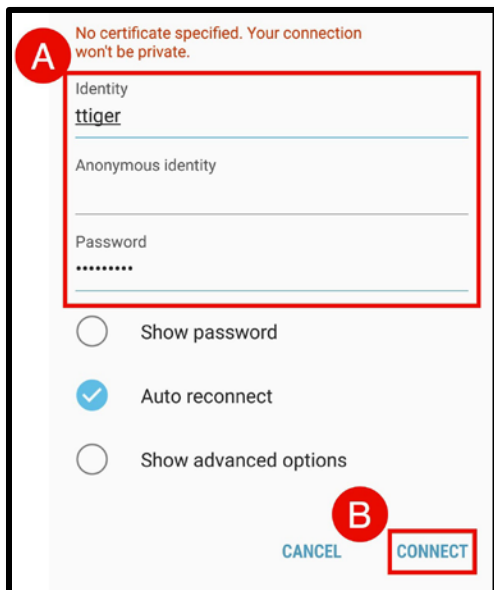


- From the CA Certificate drop-down menu select **Don't Validate**.



Note: Although it says “No certificate specified. Your connection won’t be private.”, nothing you send will be in cleartext and your connection will still be secure and encrypted.

- (A) Enter your UUID (first part of your email address) and password.
Note: This is NOT the administrative password for your device. Your Identity (user name) will be your university user name and the password associated with it. In this example, Tom Tiger’s user name is used (ttiger).
- (B) Make sure **Auto Reconnect** is selected, then click **Connect**.



- You are now connected to the eduroam wireless network.